



Bloomhall Road SE19
Guide price £550,000 - £575,000

0208 702 9333
[pedderproperty.com](https://www.pedderproperty.com)

pedder



In general

- Two double bedrooms
- No onward chain
- Kitchen / diner with bi-fold doors
- Nearby Norwood Park
- Landscaped rear garden
- Convenient for Gipsy hill rail links

In detail

GUIDE £550,000 - £575,000

A warm and inviting two double bedroom end of terrace house positioned on a popular road nearby Norwood Park and available for sale with no onward chain.

The property has been beautifully upgraded by the current owner to offer an immediately enjoyable space with a generous, cultivated rear garden.

Arranged over two levels, the accommodation and has been stylishly decorated throughout and provides scope for extension at the rear if desired (STP).

Highlights include a white high-gloss kitchen / diner with bi-fold doors to decking, a light and bright reception room, a downstairs WC, pleasant elevated views, and a spacious first floor bathroom.

A vibrantly planted garden provides two seating areas to make the most of good weather and side access for bikes etc.

This location works well for access to Gipsy Hill station and a wealth of shopping and leisure options at central Crystal Palace.

EPC: D | Council Tax Band: C



Floorplan

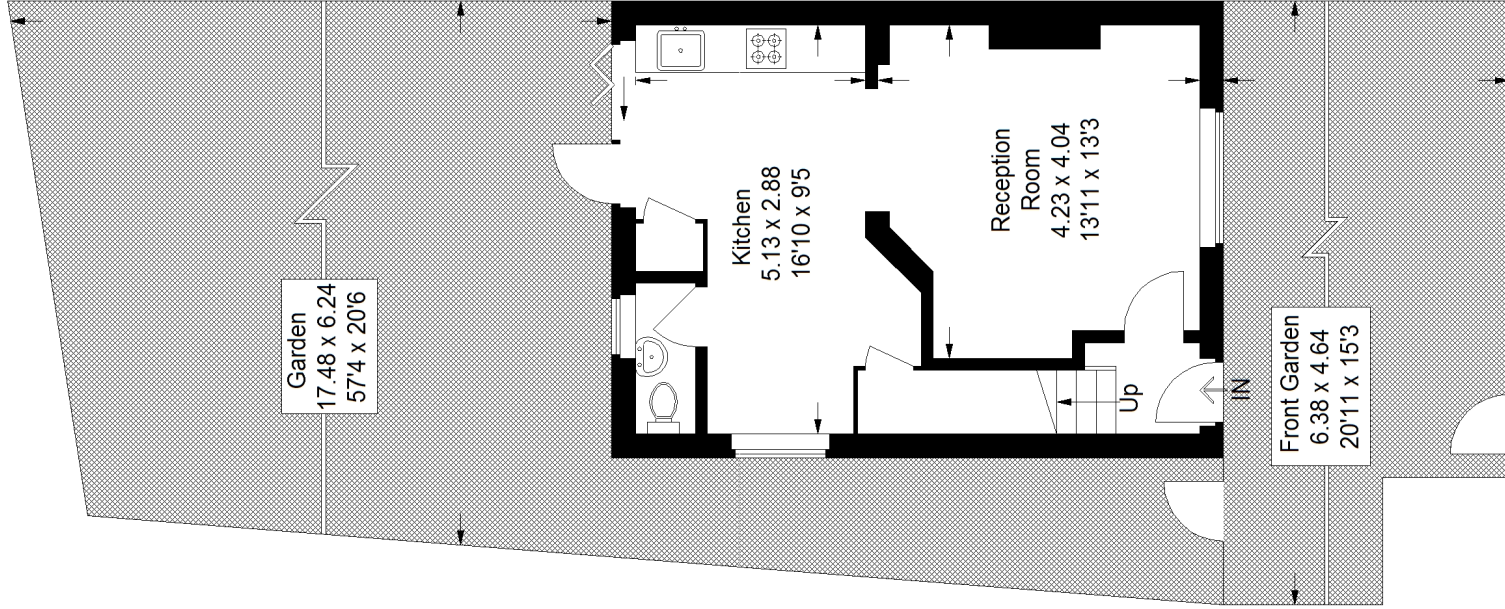
Bloomhall Road, SE19

Approximate Gross Internal Area

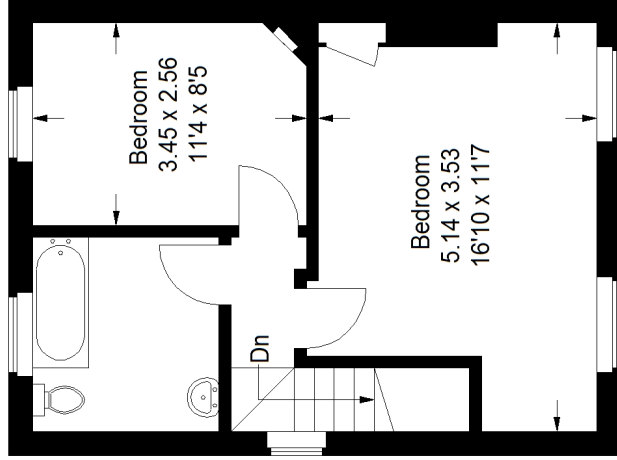
Ground Floor = 37.2 sq m / 400 sq ft

First Floor = 36.6 sq m / 394 sq ft

Total = 73.8 sq m / 794 sq ft



Ground Floor



First Floor

Copyright www.pedderproperty.com © 2022

These plans are for representation purposes only as defined by RICS - Code of Measuring Practice. Not drawn to Scale. Windows and door openings are approximate. Please check all dimensions, shapes and compass bearings before making any decisions reliant upon them.

Score	Energy rating	Current	Potential
92+	A		
81-91	B		
69-80	C		
55-68	D		
39-54	E		
21-38	F		
1-20	G		
		62 D	67 B

Pedder Property Ltd trading as Pedder for themselves and for the vendor/landlord of this property whose agents they are, give notice that (1) these particulars do not constitute any part of an offer or contract, (2) all statements contained within these particulars are made without responsibility on the part of Pedder or the vendor/landlord, (3) whilst made in good faith, none of the statements contained within these particulars are to be relied upon as a statement of representation or fact, (4) any intending purchaser/tenant must satisfy him/herself by inspection or otherwise as to the correctness of each of the statements contained within these particulars, (5) the vendor/landlord does not make or give either Pedder or any person in their employment any authority to make or give representation or warranty whatsoever in relation to this property.