



Mowbray Road SE19 2RG  
OIEO £425,000

0208 702 9333  
[pedderproperty.com](http://pedderproperty.com)

**pedder**





# In general

- Split level period conversion
- Private roof deck
- Sought after location
- Kitchen / diner
- Nearby central Crystal Palace
- Fitted storage

# In detail

A light, bright and well presented two bedroom split level period conversion positioned on a quiet, leafy road and boasting a private roof deck.

The property forms part of an attractive brick-fronted Victorian build and would suit a buyer seeking an original and characterful new home.

The accommodation includes a kitchen / diner (ideal for entertaining), two well proportioned bedrooms, a contemporary walk-in shower room, fresh neutral decor, and a pleasant green outlook.

Further benefits such as fitted storage, a recently replaced boiler and a long lease. Externally there is direct access to a generous private deck with roof top views - a perfect relaxing retreat on sunny summer days. Also, a large communal garden.

Mowbray Road sits within the popular conversation area and works well for access to central Crystal Palace (Triangle) as well as Crystal Palace Park and Norwood Lake and Grounds.

For rail links this location is primarily served by Crystal Palace overground, although Norwood Junction is also an option for fast links to London Bridge.

EPC: C | Council Tax Band: C | Lease: 149 years remaining | SC: 15% of building maintenance | GR: £0





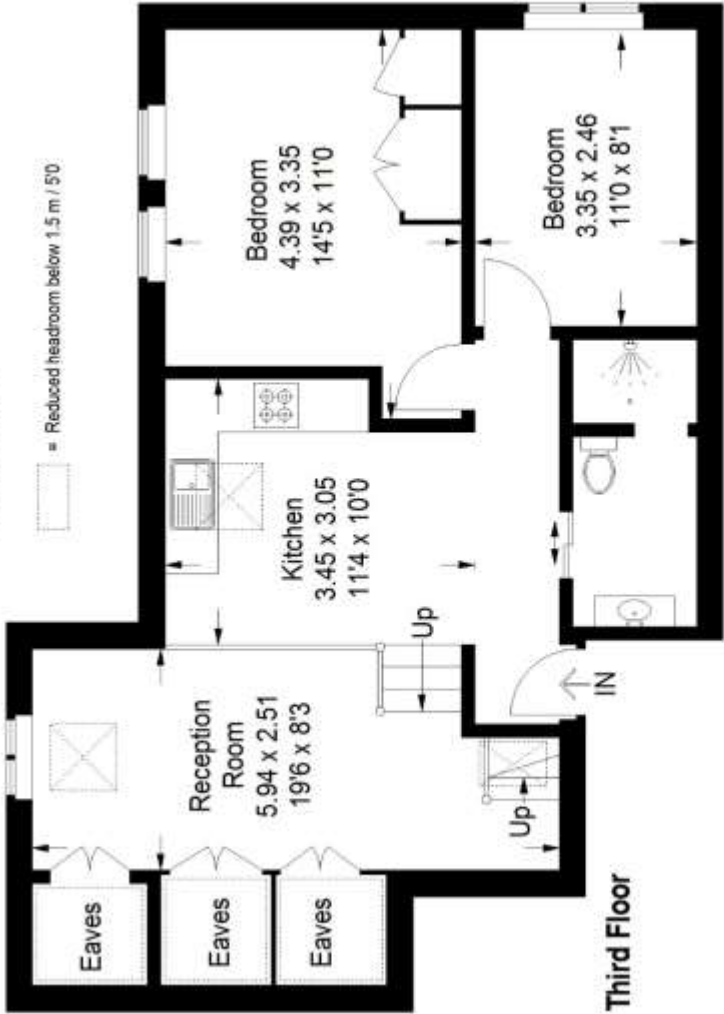
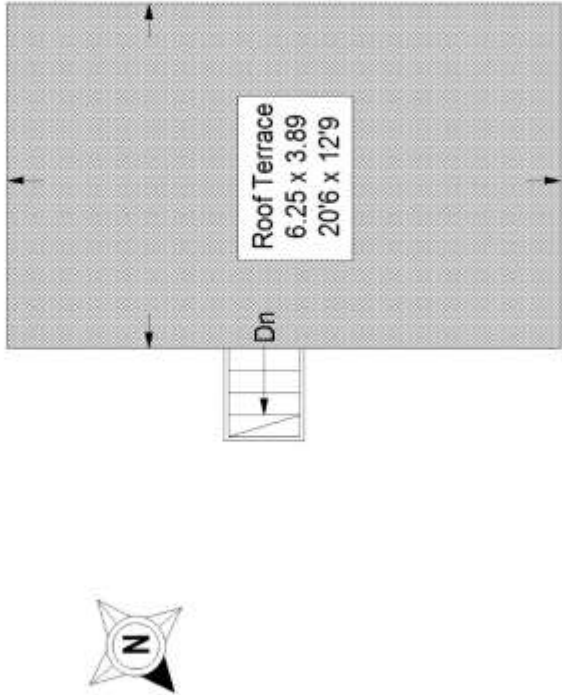
Score	Energy rating	Current	Potential
92+	A		
81-91	B		
68-80	C		
55-67	D		
43-54	E		
31-42	F		
1-30	G		

# Floorplan

Mowbray Road, SE19

Approximate Gross Internal Area  
(Excluding Eaves)

56.7 sq m / 610 sq ft



Copyright [www.pedderproperty.com](http://www.pedderproperty.com) © 2022

These plans are for representation purposes only as defined by RICS - Code of Measuring Practice. Not drawn to Scale. Windows and door openings are approximate. Please check all dimensions, shapes and compass bearings before making any decisions reliant upon them.

Pedder Property Ltd trading as Pedder for themselves and for the vendor/landlord of this property whose agents they are, give notice that (1) these particulars do not constitute any part of an offer or contract, (2) all statements contained within these particulars are made without responsibility on the part of Pedder or the vendor/landlord, (3) whilst made in good faith, none of the statements contained within these particulars are to be relied upon as a statement of representation or fact, (4) any intending purchaser/tenant must satisfy him/herself by inspection or otherwise as to the correctness of each of the statements contained within these particulars, (5) the vendor/landlord does not make or give either Pedder or any person in their employment any authority to make or give representation or warranty whatsoever in relation to this property.