



## A TWO BEDROOM SEMI-DETACHED HOME

---

Ross Haven Place, Northwood, Middlesex HA6 1DJ

**ROBSONS**



# A TWO BEDROOM SEMI-DETACHED HOME

Ross Haven Place, Northwood, Middlesex  
HA6 1DJ

**ELECTRONIC GATED ENTRANCE • PRIVATE ROAD • SINGLE GARAGE • ALLOCATED PARKING • FRONT AND REAR PRIVATE GARDEN • QUIET AND SECLUDED • CONSERVATORY/ GARDEN ROOM • PRINCIPAL BEDROOM WITH ENSUITE • POTENTIAL TO EXTEND STPP •**

## Description

A rare opportunity to purchase this unique two bedroom semi detached residence located in a private development, comprising only five houses.

The property is located within a gated Mews with the current owners having occupied since being built in 1999.

Further benefits include a garage with an extra allocated parking space, stunning garden room with views onto the secluded private garden. Bedroom two is currently utilised as a single bedroom, but the room could be returned to a double bedroom by removal of the fitted wardrobes. The kitchen has had a new cooker and hob fitted and in addition to this a new gas boiler has been installed.







### Location

Northwood provides a range of shopping facilities including Waitrose supermarket, a variety of restaurants and other amenities with the Metropolitan Line station providing access to Baker Street and the City. There is a plethora of state and private schooling together with a wide choice of recreational facilities, which include golf courses and fitness centres. The M1, M40 and M25 motorways are also accessible.

### Additional Information

Tenure: Freehold

Local Authority: London Borough of Hillingdon

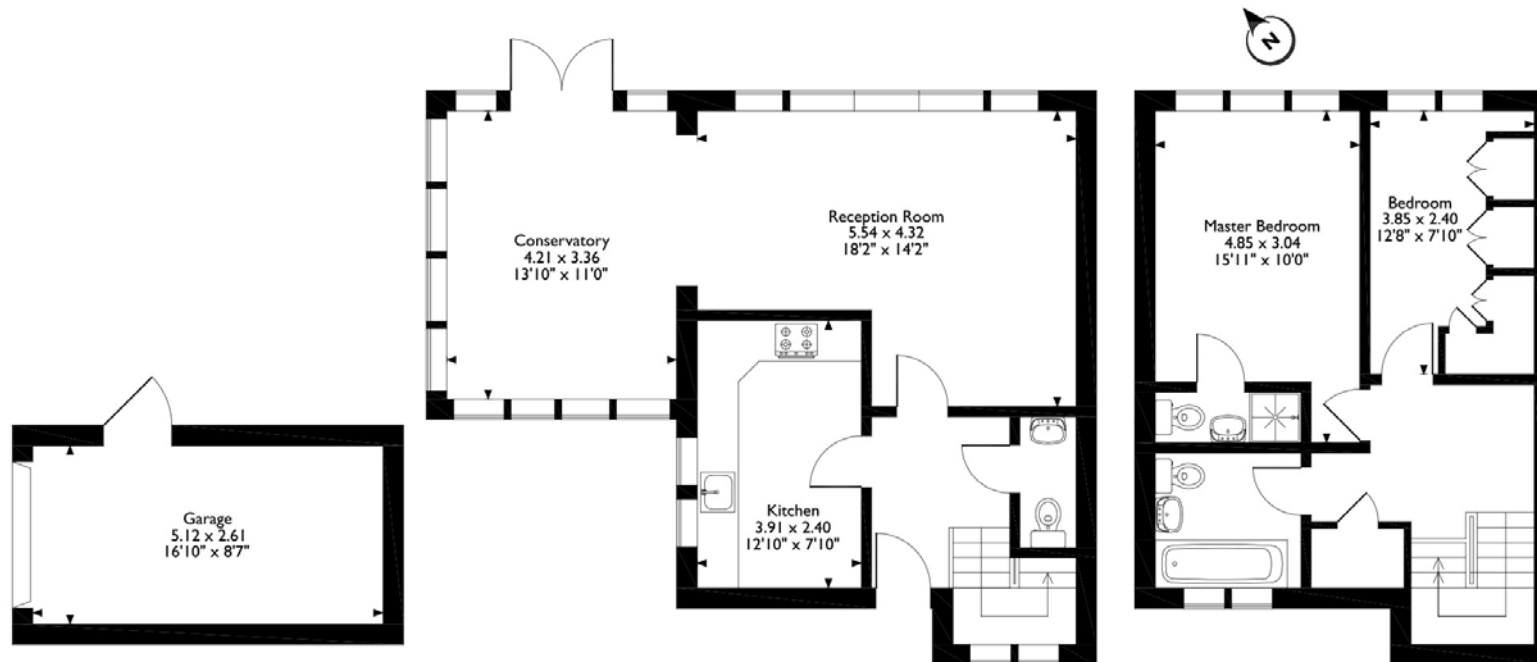
Council Tax: Band F

Energy Efficiency Rating: Band E





I Ross Haven Place, Northwood  
Approximate Gross Internal Area  
105 Sq M / 1174 Sq Ft



Please note that the location of doors, windows and other items are approximate and this floorplan is to be used for illustrative purposes only. Unauthorized reproduction is prohibited.

**ROBSONS**

Address 7 Clive Parade, Northwood, Middlesex, HA6 2QF  
Tel: 01923 835355 northwood@robsonswb.com

[www.robsonswb.com](http://www.robsonswb.com)

[www.the-londonoffice.co.uk](http://www.the-londonoffice.co.uk)  
40 ST JAMES'S PLACE SW1