

Location:

The property is a 6 minute walk from the new Crossrail station at Acton Mainline Station and a few minutes walk to Churchfield Road, offering a great selection of boutique shops, bars and restaurants.

Key points:

- 4 bedrooms
- South Facing garden
- Refurbished to a high standard throughout
- 3 bathrooms
- 1,770 sqft
- 6 min walk to new Elizabeth Line

Do Better:

Acton  
sales@astonrowe.co.uk

103 Churchfield Road,  
Acton, London, W3 6AH

020 8992 3600

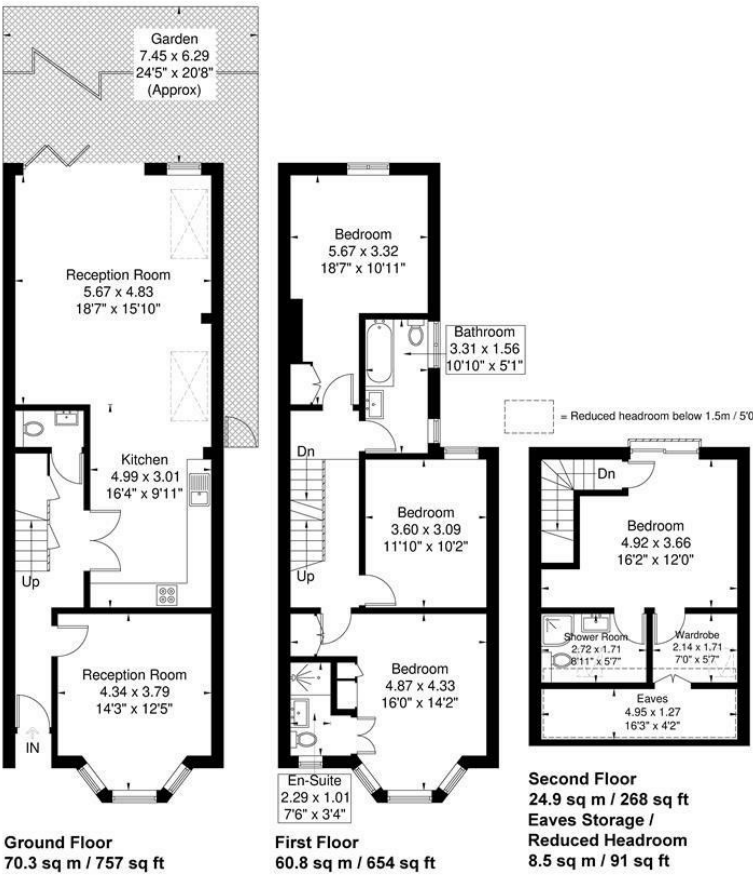


Asking Price £1,300,000

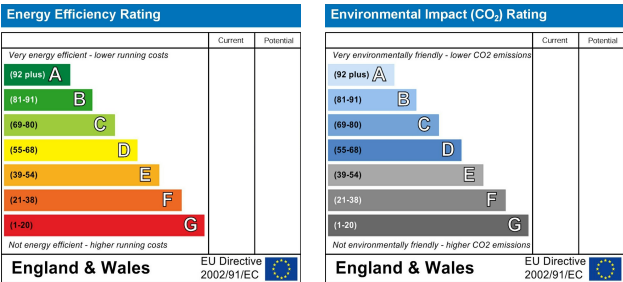
Birkbeck Avenue, London W3 6HX

- 2 Reception Rooms
- 4 Bedrooms
- 3 Bathrooms

Birkbeck Avenue  
Approximate Gross Internal Area = 156.0 sq m / 1679 sq ft  
Eaves Storage / Reduced Headroom = 8.5 sq m / 91 sq ft  
Total = 164.5 sq m / 1770 sq ft



Although every attempt has been made to ensure accuracy, all measurements are approximate.  
The floorplan is for illustrative purposes only and not to scale.  
© www.perspective.co.uk







A magnificent period semi-detached spacious 4-bedroom home totally refurbished throughout to an exceptionally high standard. The house is an impressive 1,770 SQFT which is set over 3 floors. The property includes a front reception room with bay sashed windows. To the rear is a fabulous open plan kitchen featuring a stone work top and integrated Bosch appliances, Incorporating the family / dining room complete with 2 large skylights and bi-fold doors leading onto a south facing paved garden, with full exterior lighting. Perfect for those summer or winter evenings. The 4 double bedrooms are set over the top 2 floors, with fitted wardrobes to most. The stunning master bedroom on the top floor features a walk-in wardrobe, en-suite and a south facing Juliet balcony.

As well as a WC on the ground floor, the house benefits further from two en-suite bathrooms and a large family bathroom.

Westfield shopping centre is a 13 minute drive . Shepherd's Bush (Central Line) and Goldhawk Road (Circle and Hammersmith & City Lines) can be found nearby.

The cross rail estimated train times from Acton Mainline station when opened are:

- Bond Street - 9 minutes.

The current owner says:

This is a beautifully refurbished family house set on a delightful quiet street.

-  House - Semi-Detached
-  2 Reception Rooms
-  4 Bedrooms
-  Parking
-  Private Garden

What's better:

Birkbeck Avenue is conveniently situated within a short walk of Acton Mainline station and the new Elizabeth Line and a short distance from Churchfield Road with its varied choice of shops, boutiques, restaurants and cafes.

