



[www.dpsestates.co.uk](http://www.dpsestates.co.uk)



**56 Surrey Street, Norwich, NR1 3FD**

**£2,750 Per month**

These magnificent apartments are finished to an exceptional standard and offer the very best in luxury living. Set within a converted Grade II listed Georgian building and enviously positioned in the heart of Norwich city centre. All of the apartments boast fantastic Arcadia kitchens, bathrooms & cabinets, fully integrated NEFF kitchen appliances, allocated parking and light, open-plan areas. This stunning apartment is arranged over two floors and finished to the highest standard.

## Entrance Hall

**Kitchen/Lounge/Diner 30'10" x 17'1" (9.40m x 5.22m)**



## WC



**Three-Piece Family Bathroom 9'4" x 5'9" (2.85m x 1.77m)**



**Bedroom Three 13'5" x 6'10" (4.10m x 2.10m)**

**Master Bedroom 13'5" x 12'1" (4.10m x 3.70m)**

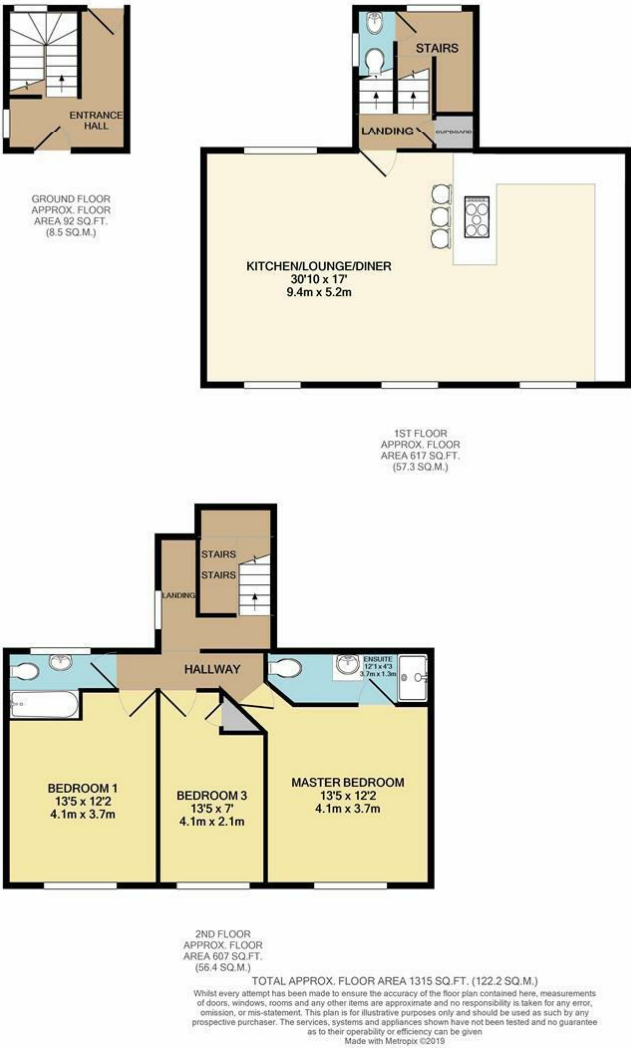
**En-Suite 12'1" x 4'3" (3.7m x 1.3m)**



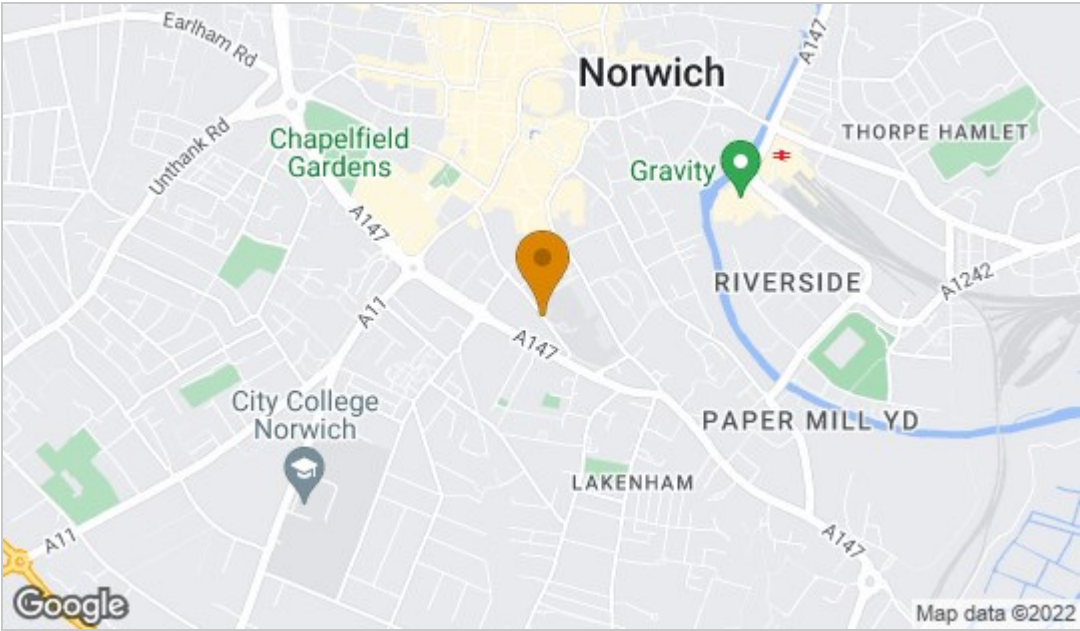
**Bedroom Two 13'5" x 12'1" (4.10m x 3.70m )**



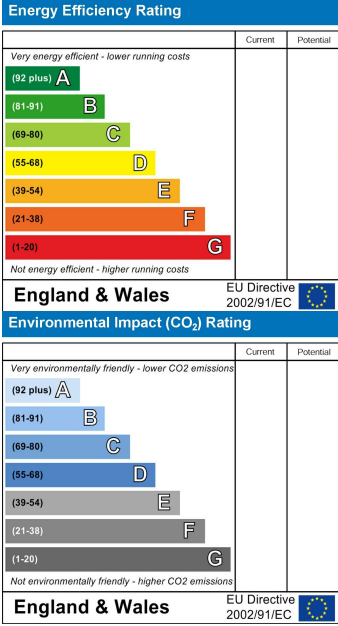
Floor Plan



Area Map



Energy Efficiency Graph



These particulars, whilst believed to be accurate are set out as a general outline only for guidance and do not constitute any part of an offer or contract. Intending purchasers should not rely on them as statements of representation of fact, but must satisfy themselves by inspection or otherwise as to their accuracy. No person in this firm's employment has the authority to make or give any representation or warranty in respect of the property.