



149 Upper Richmond Road, Putney, London, SW15 2TX

t: 0208 788 8822

e: [putney@allanfuller.co.uk](mailto:putney@allanfuller.co.uk)

[www.allanfuller.co.uk](http://www.allanfuller.co.uk)

## Kersfield Road London, SW15

Charming split-level, 1 bedroom maisonette, located close to Putney Hill. Boasting a light and spacious feel throughout this well presented home comprises a generous double bedroom, bathroom, modern fitted kitchen and a reception with direct access to its own PRIVATE balcony.

Kersfield Road is conveniently located to allow easy access to Putney High Street's shops, bars and restaurants not forgetting excellent transport links in and out of London, 18 minutes from Putney Station to London Waterloo and 29 minutes from East Putney Tube Station to Oxford Circus.

Available furnished from the 6th September



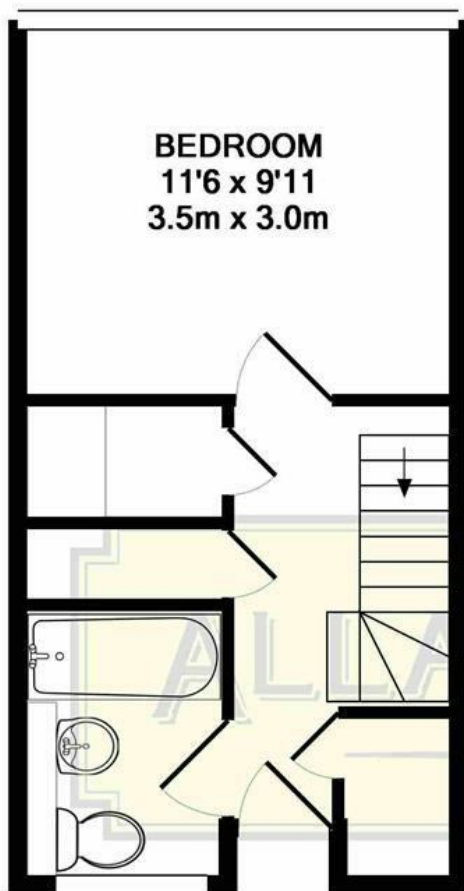
£1,425 Per Month











2ND FLOOR  
APPROX. FLOOR  
AREA 255 SQ.FT.  
(23.6 SQ.M.)



3RD FLOOR  
APPROX. FLOOR  
AREA 206 SQ.FT.  
(19.1 SQ.M.)

KERSFIELD ROAD, SW15  
TOTAL APPROX. FLOOR AREA 461 SQ.FT. (42.8 SQ.M.)



Whilst every attempt has been made to ensure the accuracy of the floor plan contained here, measurements of doors, windows, rooms and any other items are approximate and no responsibility is taken for any error, omission, or mis-statement. This plan is for illustrative purposes only and should be used as such by any prospective purchaser. The services, systems and appliances shown have not been tested and no guarantee as to their operability or efficiency can be given  
Made with Metropix ©2018

With regards to any information supplied by us in relation to lease, ground rent and service charge it is essential that you have this information checked by your solicitor. We have transmitted information supplied to us by the vendor of the property but we have not been able to inspect the lease to check its accuracy. Please note that we have not tested any of the equipment or utilities at this property, nothing in these particulars shall be deemed a statement that the property is in good condition or otherwise nor that any of the services or facilities are in good working order. Measurements are approximate they were taken with a sonic tape, are as accurate as possible and usually measured from the widest point of any room. Description provided herein represents the opinion of the author, is given in good faith but should not be constructed as statements of fact. The particulars and photograph are for guidance only.