

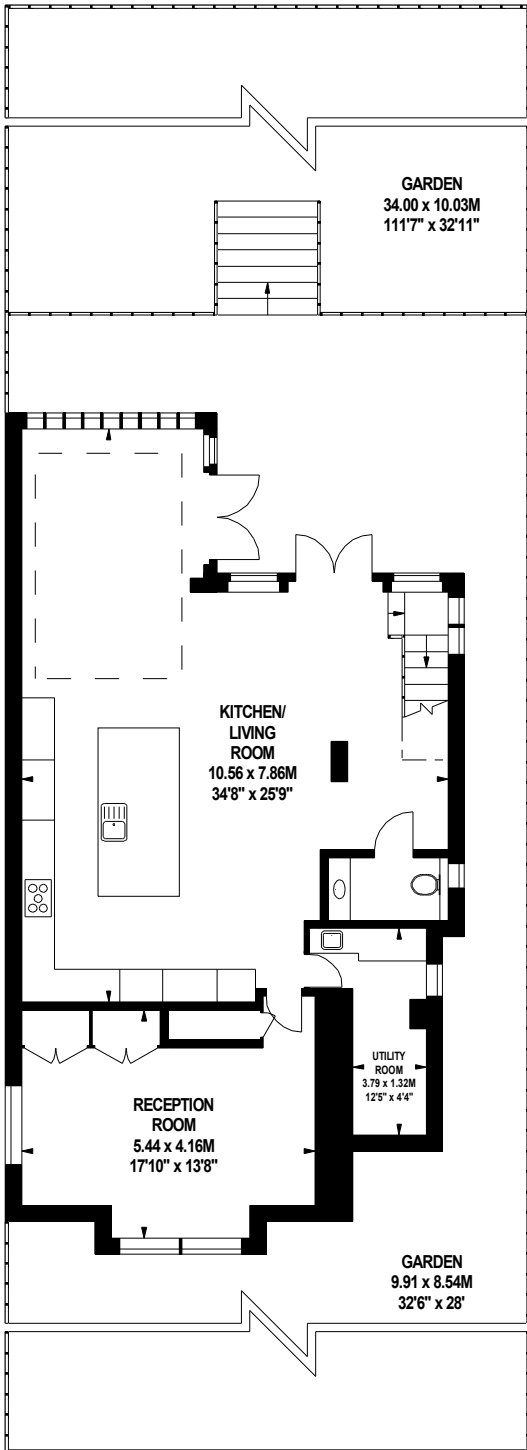
Grove Park Road, W4

Approximate gross internal area

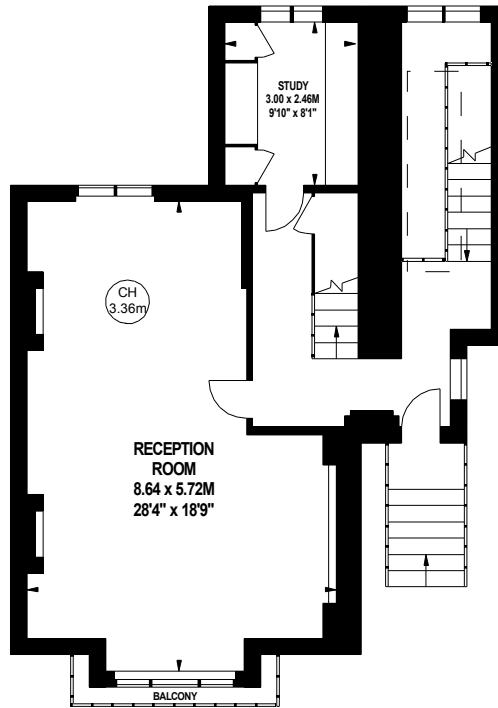
280.37 sq m / 3018 sq ft



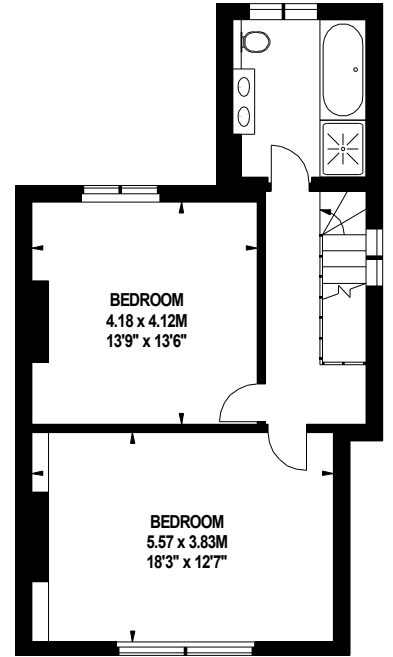
Key :
CH - Ceiling Height



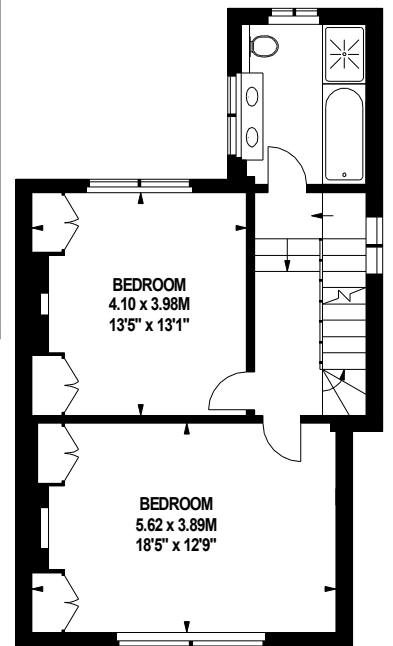
Lower Ground Floor
1034 sq ft



Raised Ground Floor
797 sq ft



Second Floor
599 sq ft



First Floor
588 sq ft

The floor plan is not to scale and measurements and areas shown are approximate and therefore should be used for illustrative purposes only. The plan has been prepared in accordance with the RICS code of Measuring Practice and whilst we have confidence in the information produced, it must be not be relied on. If there is any aspect of particular importance, you should carry out or commission your own inspection of the property.
Copyright of FeaturePRO.