

Location:

Goldsmith Avenue is a quiet residential road located close to the amenities of Acton and Shepherd's Bush. Both Acton Central and Acton Main Line stations are close by.

Key points:

- West facing garden
- Off street parking for 2 cars
- Semi detached
- 6 bedrooms
- Potential to extend S.T.P.P
- Beautiful period features

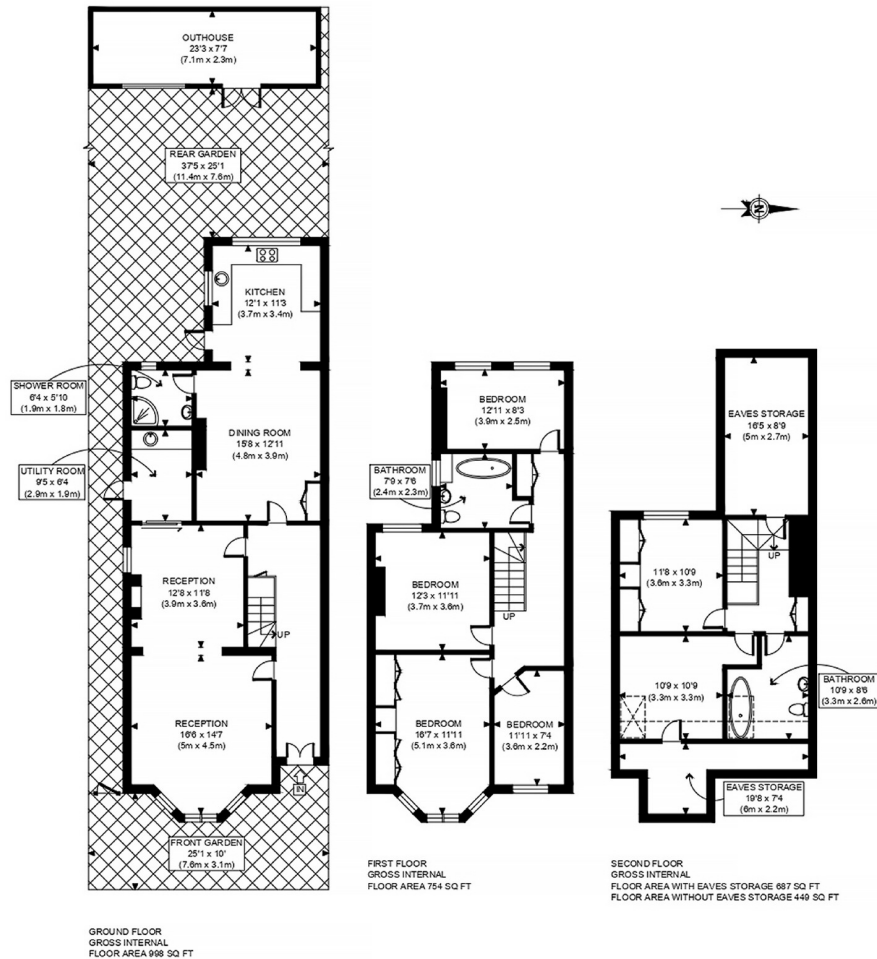
Do Better:

Acton:

E acton@astonrowe.co.uk
103-105 Churchfield Road,
London W3 6AH
T 020 8992 3600

Brook Green & Hammersmith:

E brookgreen@astonrowe.co.uk
82 Shepherds Bush Road,
London W6 7PH
T 020 7871 6997



PROPERTY PHOTO PLANS.CO.UK
ONE STOP SHOP FOR PROPERTY MARKETING

This plan is for illustrative purposes only and should be used as such by any prospective client. Whilst every attempt has been made to ensure the accuracy of the Floor Plan contained here, measurements of the doors, windows, rooms and any other items are approximate and no responsibility is taken for any errors, omissions, or misstatement. The services, systems and appliances shown have not been tested and no guarantee as to the operability or efficiency can be given.



Asking price £1,500,000

Goldsmith Avenue,
London W3 6HR

A lovely 6 bedroom
Semi detached family
home in Acton.

- 2 Reception rooms
- 6 Bedrooms
- 3 Bathrooms



A striking six bedroom Semi detached period house, situated on one of Acton's premier residential roads in Poets Corner. This family home offers over 2,201 sqft of accommodation and comprises two large reception rooms with beautiful high ceilings, period features and a downstairs bathroom. A modern spacious kitchen/ diner with access on to a West facing mature garden. The first floor homes the family bathroom, thee double bedrooms and a fourth single bedroom/office. The second floor accommodates two further double bedrooms and additional bathroom. Moments from the vibrant café culture of Churchfield Road and a great selection of boutique shops, bars and eateries. The house also benefits from off street parking for two cars.

The current owner says:
This house is in a really great location for the local shops and transport links

-  Period House
-  2 receptions
-  6 bedrooms
-  Off street parking
-  West facing garden

What's better:

The property has potential to do a side return and extend on the second floor outrigger S.T.P.P via Ealing Council.

