

Worcester Road Wimbledon, SW19 7QG

£1,100,000 Freehold



A 1668 sq ft, four bedroom, three reception, three bathroom, modern end-terraced townhouse with off-street parking and no onward chain located moments from Wimbledon town centre. This beautifully presented property has fantastic living space split over four floors offering contemporary family living accommodation. On the ground floor is a great study and a full length living room with doors out to a low maintenance garden. The basement has a bedroom/study with en-suite, modern kitchen/diner and a courtyard garden. The other bedrooms are split over two floors including a spacious master with en-suite.

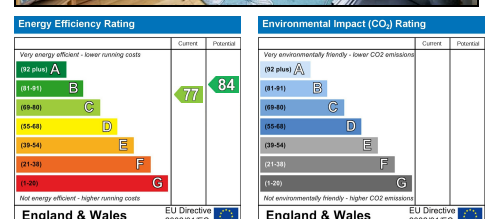
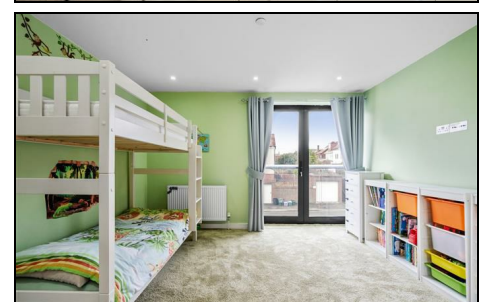
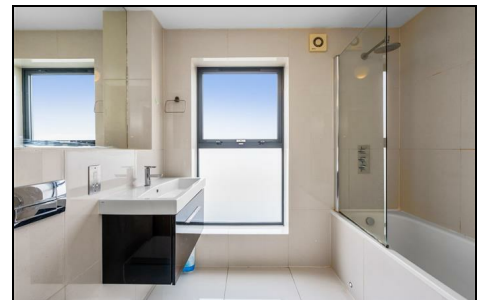
Worcester Road, SW19

Approximate Gross Internal Area
 Lower Ground Floor = 43 sq m / 463 sq ft
 Ground Floor = 46 sq m / 495 sq ft
 First Floor = 37 sq m / 398 sq ft
 Second Floor = 28 sq m / 301 sq ft
 Store = 1 sq m / 11 sq ft
 Total = 155 sq m / 1668 sq ft



This floor plan is for representation purposes only and is not drawn to scale. Whilst every attempt has been made to ensure its accuracy measurements are approximate only and should be checked before making any decisions reliant upon them.
 Copyright Bespokeplans.co.uk 2014
 (ID118050)

- End-Terraced Modern Townhouse
- Beautifully Presented
- Four Bedrooms/Three Receptions/Three Bathrooms
- 1668 sq ft of Spacious Living Accommodation
- Off-Street Parking
- No Onward Chain
- Moments from Wimbledon Town
- Close to Excellent Schools
- EPC Rating C



For Free Mortgage Quote and Best Mortgage Rates, call an Ellisons Mortgage Advisor on 020 8944 9494



Although these particulars are believed to be correct, their accuracy is not guaranteed and they do not form part of any contract.

Celebrating 30 years of successful Sales and Lettings in Merton

