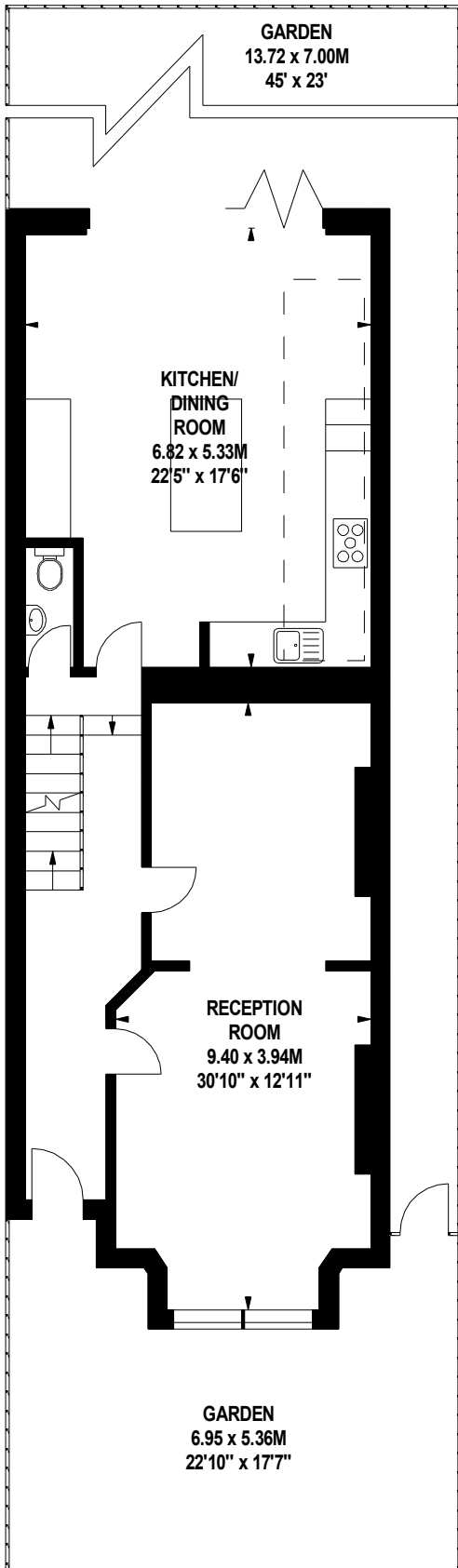
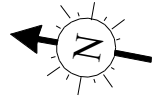


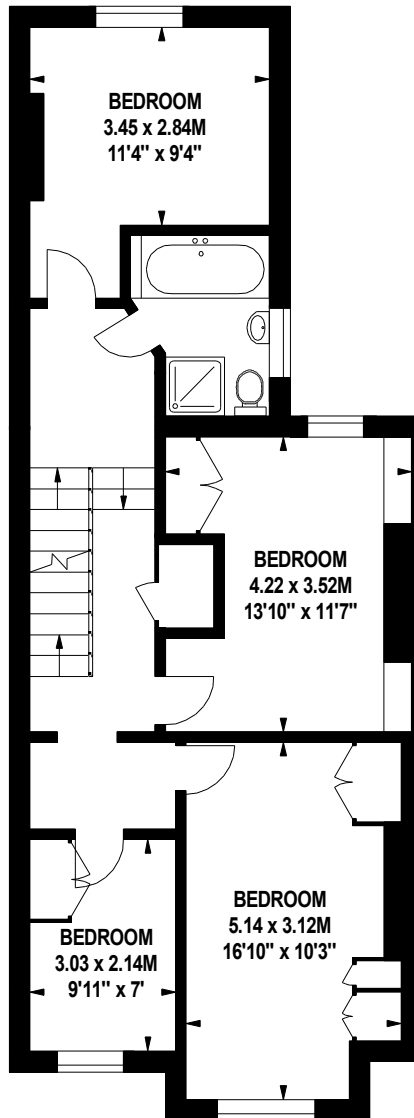
Thornton Avenue, W4

Approximate gross internal area

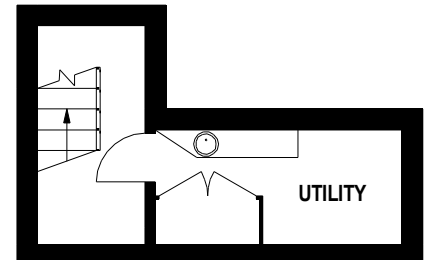
210.23 sq m / 2263 sq ft



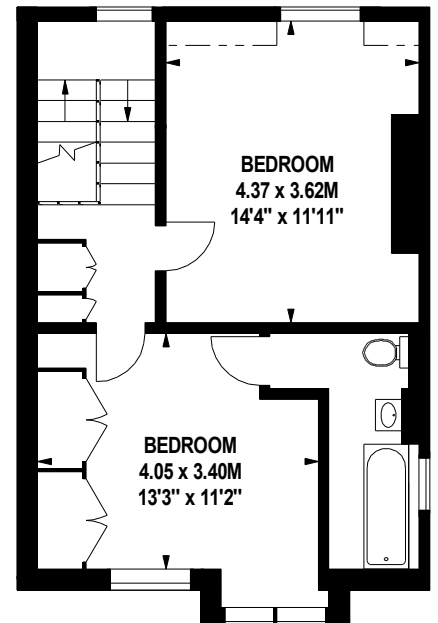
Ground Floor
922 sq ft



First Floor
752 sq ft



Basement
118 sq ft



Second Floor
471 sq ft

The floor plan is not to scale and measurements and areas shown are approximate and therefore should be used for illustrative purposes only. The plan has been prepared in accordance with the RICS code of Measuring Practice and whilst we have confidence in the information produced, it must be not be relied on. If there is any aspect of particular importance, you should carry out or commission your own inspection of the property.
Copyright of FeaturePRO.