

WAYNE & SILVER



24 Palace Court

Hyde Park, London, W2 4HU

£6,450,000

A rarely available 4/5 bedroom, 3 bathroom lateral apartment situated on the raised ground floor of a handsome and well maintained red brick period mansion block.

The apartment offers spacious accommodation, fantastic ceiling heights, wonderful period features, character packed rooms and extra storage provided in a private cellar.

Situated in a prime residential street, with Kensington Gardens located at the end of the road. The fashionable Westbourne Grove and Portobello Road with their array of shops and restaurants are just a short walk away with Notting Hill Gate (Central, District and Circle lines) and Bayswater (Circle and District lines) stations close by.

Share of Freehold

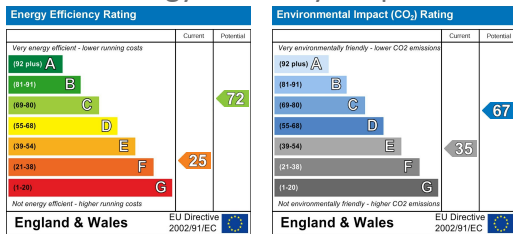
Viewing

Please contact our Hampstead Sales Office on 020 7431 4488 if you wish to arrange a viewing appointment for this property or require further information.

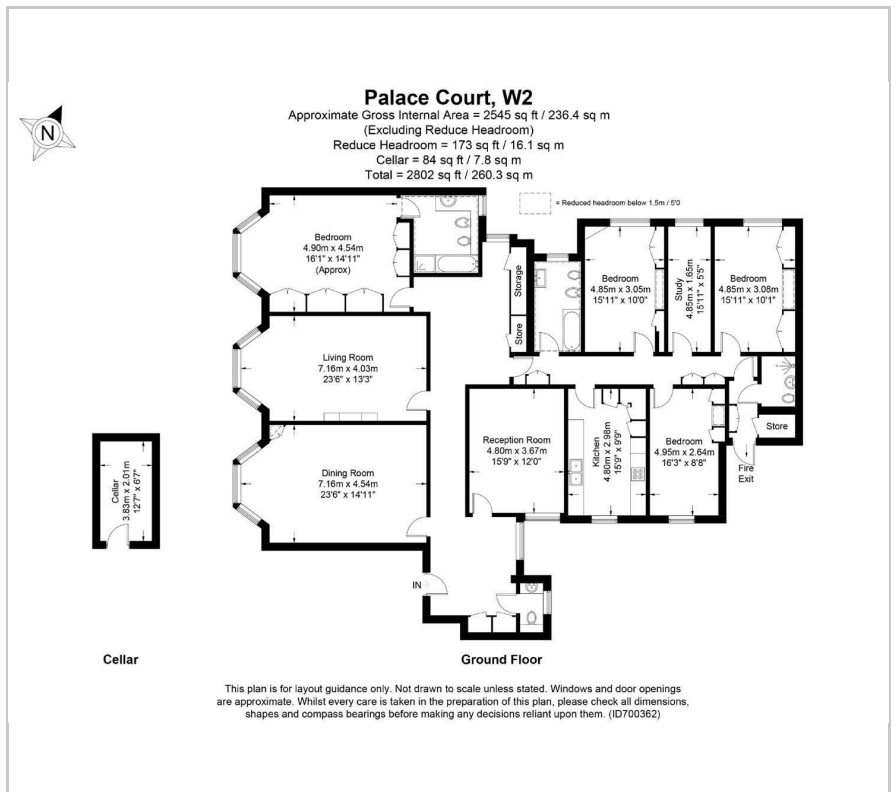




Energy Efficiency Graph



Floor Plan



Area Map



These particulars, whilst believed to be accurate are set out as a general outline only for guidance and do not constitute any part of an offer or contract. Intending purchasers should not rely on them as statements of representation of fact, but must satisfy themselves by inspection or otherwise as to their accuracy. No person in this firm's employment has the authority to make or give any representation or warranty in respect of the property.

41 Heath Street, Hampstead, London, NW3 6UA

Tel: 020 7431 4488 Email: info@wayne-silver.com wayne-silver.com