

Greyhound Road

Hammersmith, London, W6



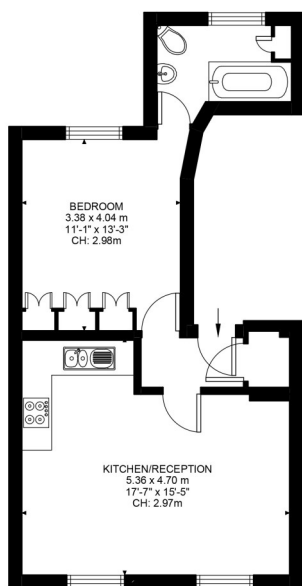


Greyhound Road

Hammersmith, London, W6

Price Guide: £425,000

A fantastic one bedroom first floor flat with exceptionally high ceilings located on a popular road within a short walk to both Barons Court and Hammersmith underground stations. The flat is extremely well presented throughout and benefits from a spacious 17'7 x 15'5 open plan reception room with a well fitted kitchen, excellent dining space and a well-defined separate living area. The bedroom 13'3 x 11'1 is generous in proportions and also benefits from a full range of built in wardrobes. The bathroom is beautifully fitted and offers a touch of luxury. This is an ideal flat for a first-time buyer and offers easy access to a variety of local shops and restaurants including Waitrose, Sainsburys, Café Nero, Pret-a-Manger, Pizza Express and The Crabtree pub. The River Thames towpath is within a 5 minute walk and offers a fantastic array of pubs and restaurants as well as the recently renovated Riverside Studios. Chain Free. Share of Freehold.



First Floor
473 ft²

Greyhound Road, W6
Approximate Gross Internal Area
43.93 SQ.M / 473 SQ.FT

Illustration for identification purposes only. Not to scale.
Floor Plan Drawn According To RICS Guidelines.

Fantastic one bedroom first floor flat in popular road

Extremely well presented throughout | Open plan reception rooms | Well fitted kitchen | Bathroom

Generous bedroom with full range of wardrobes | Short walk to River Thames | No onward chain

Close to transport & amenities | 473 Sq. Ft. (43.93 Sq. M.) Share of Freehold

All viewings by appointment
through our **Hammersmith Office:**

T: 020 7385 7000
E: hammersmith@lawsonrutter.com

192 Fulham Palace Road, London
W6 9PA

In accordance with the Property Misdescription Act 1991, we wish to emphasise that the information given in these particulars is intended to help you decide whether you wish to view this property. Whilst every care is taken to ensure the accuracy of these particulars please note that all measurements are approximate and we are, for the accuracy of other information, reliant on what the seller has provided. We strongly recommend that you rely on your own inspections and those of your advisors to establish the details of any aspects which are of particular importance. Please note that we have not undertaken any survey of the property or the appliances within it and the buyer must rely on their own investigations prior to exchange of contracts.

