



Wiverton Road SE26  
£1,200,000

0208 702 9777  
[pedderproperty.com](http://pedderproperty.com)

**pedder**







# In general

- Beautiful four storey Victorian house
- Superb kitchen / dining room
- Through reception
- Wealth of period features
- Utility room, Cloakroom and downstairs shower
- Four double bedrooms
- Study with Juliette balcony
- Bathroom and Shower Room
- Landscaped garden
- No onward chain

# In detail

A stunning four storey Victorian house, located in a charming residential street in Sydenham, with convenient access to a variety of coffee shops, restaurants, parks and excellent transport links.

Elegant and beautifully presented, the renovation of this home has been executed with superb attention to detail, sensitively modernised whilst showcasing the period detailing throughout.

Comprising an exceptional kitchen / dining room benefitting from bespoke cabinetry, brushed gold fittings and granite work surfaces, a wood burner, and a large bay window flooding the space with natural light, the raised ground floor enjoys an equally impressive through reception with wonderfully high ceilings, and study to the rear with a Juliette balcony overlooking the gardens, providing a tranquil space to work.

The upper floors offer four double bedrooms, a large family bathroom and a shower room.

The gardens are beautifully landscaped and provide a wonderful retreat with designated areas to entertain, relax and enjoy as well as being stocked with an array of shrubs, plants and established borders, creating privacy as well as being incredibly visually pleasing.

The property is moments from wonderful green open spaces including Mayow Park, Green and Brown café, tennis courts, orchard, and an outdoor gym, as well as a wealth of amenities which can be found on the high street. Transport links are enviably close including Sydenham Overground and Penge East rail.

EPC: TBC | Council Tax: TBC



# Floorplan

## Wiverton Road, SE26

Approximate Gross Internal Area

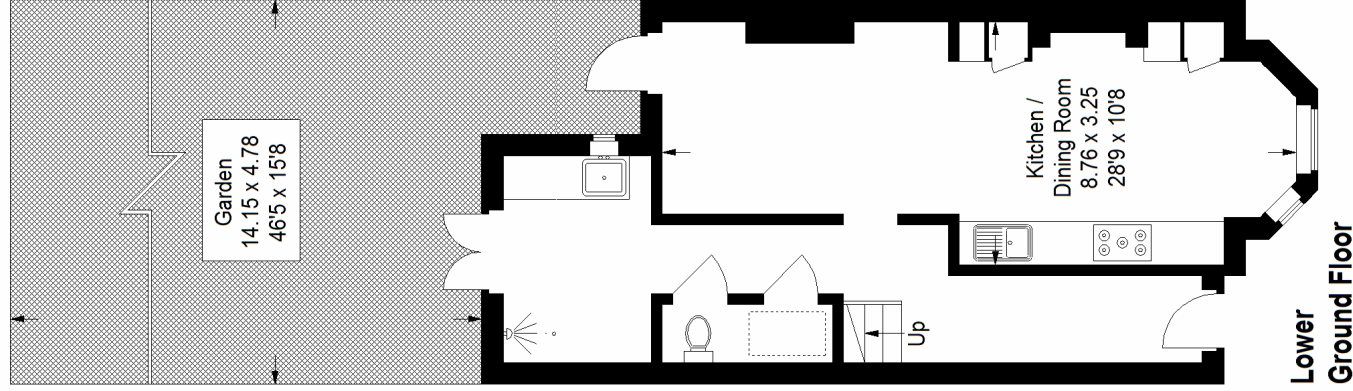
Lower Ground Floor = 44.8 sq m / 482 sq ft

Ground Floor = 44.8 sq m / 482 sq ft

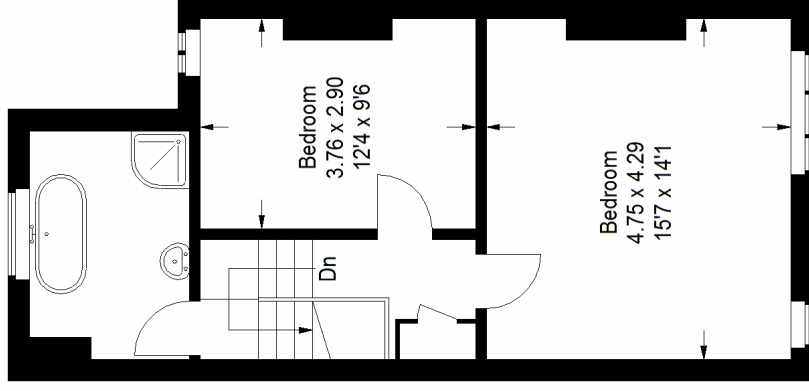
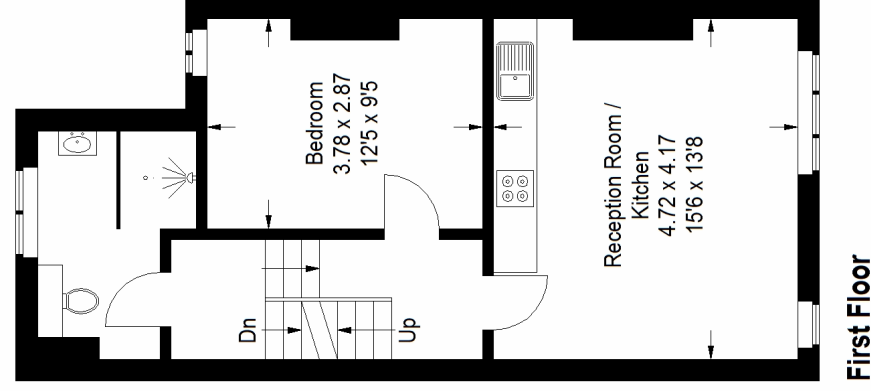
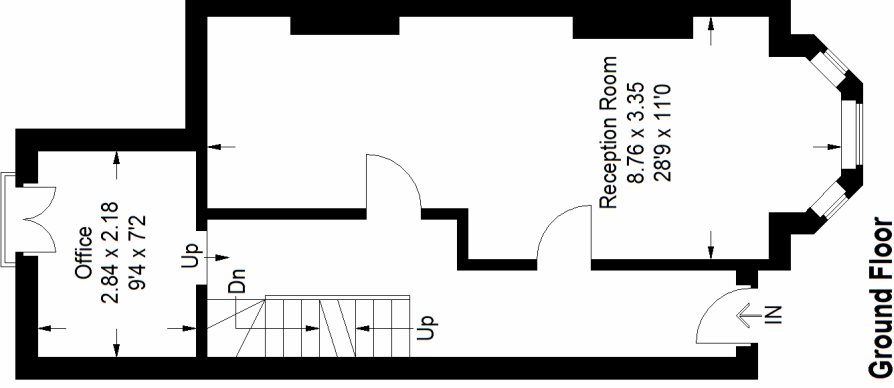
First Floor = 45.7 sq m / 492 sq ft

Second Floor = 45.7 sq m / 492 sq ft

Total = 181.0 sq m / 1948 sq ft



□ = Reduced headroom  
below 1.5 m / 5'0



Pedder Property Ltd trading as Pedder for themselves and for the vendor/landlord of this property whose agents they are, give notice that (1) these particulars do not constitute any part of an offer or contract, (2) all statements contained within these particulars are made without responsibility on the part of Pedder or the vendor/landlord, (3) whilst made in good faith, none of the statements contained within these particulars are to be relied upon as a statement of representation or fact, (4) any intending purchaser/tenant must satisfy him/herself by inspection or otherwise as to the correctness of each of the statements contained within these particulars, (5) the vendor/landlord does not make or give either Pedder or any person in their employment any authority to make or give representation or warranty whatsoever in relation to this property.

Copyright www.pedderproperty.com © 2022

These plans are for representation purposes only as defined by RICS - Code of Measuring Practice. Not drawn to Scale. Windows and door openings are approximate. Please check all dimensions, shapes and compass bearings before making any decisions reliant upon them.