



BYWATER PLACE SE16  
LONDON BOROUGH OF SOUTHBURY  
Nos 1-22, 6-8-11-13 THROUGH TUNNEL

Bywater Place, Rotherhithe

Guide Price £500,000 Leasehold

OLIVER J. JACQUES  
EST. 1986





## Bywater Place, Rotherhithe

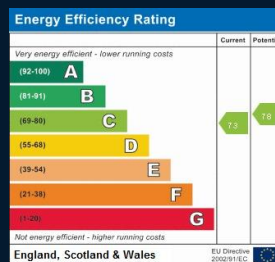
Offered for sale with an extended lease, this beautifully presented duplex apartment offers naturally bright accommodation in a quiet residential cul-de-sac. Maintained with impeccable style by the property's devoted occupier, the property comprises a south facing reception room with full width windows and winter-garden style glazed skylights flooding the space with light. The separate kitchen enjoys smooth contemporary lines and a window for ventilation. There is also a downstairs wc and utility area for washing machine and dryer. Upstairs houses two double bedrooms and the main bathroom. Ample storage and development potential exists in the loft space above. Complete with recently installed double glazing and private parking bay downstairs.

- Two Double Bedrooms
- 300yds to Thames and Woodlands
- South Facing Reception Room
- Free of Onward Chain
- Separate Kitchen
- Lease Being Extended

**South East London**  
020 7231 5050

Email [southeast@o-j.co.uk](mailto:southeast@o-j.co.uk)

229-231 Lower Road, London, SE16 2LW



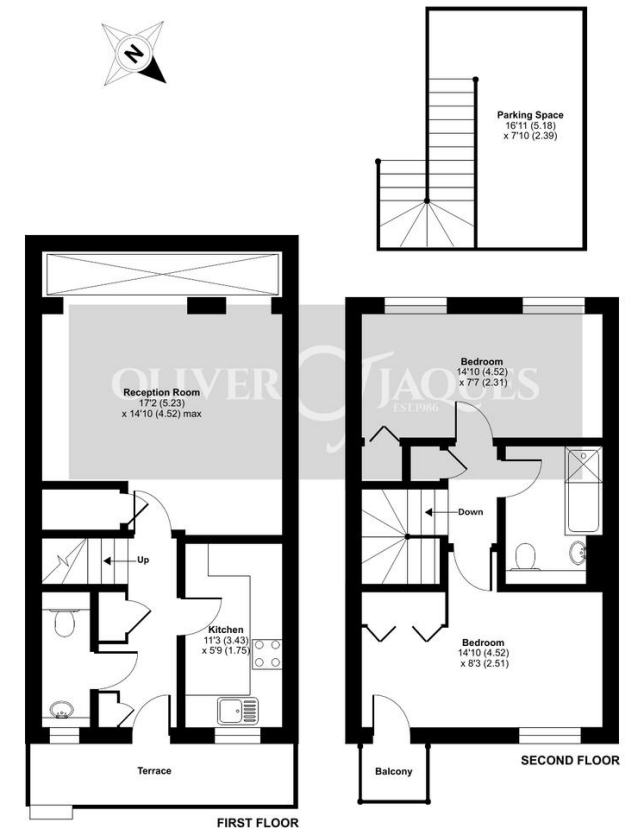
web [www.o-j.co.uk](http://www.o-j.co.uk)

Every care has been taken with the preparation of this brochure but it is for general guidance only and complete accuracy cannot be guaranteed. If there is any point, which is of importance professional verification should be sought. This brochure does not constitute a contract or part of a contract. We are not qualified to verify tenure of property. Prospective purchasers should seek clarification from their solicitor or verify the tenure of this property for themselves by visiting [www.gov.uk/government/organisations/land-registry](http://www.gov.uk/government/organisations/land-registry). The mention of any appliances, fixtures or fittings does not imply they are in full working order. Photographs are reproduced for general information and it cannot be inferred that any item shown is included in the sale. All dimensions are approximate. Walking times are taken from Google Maps and measured from the centre of the postcode, which may differ from the individual property. We routinely refer clients to Chancery Mortgage Services Ltd. It is your decision whether you choose to deal with Chancery Mortgage Services Ltd. In making that decision, you should know that we receive an annual payment benefits from Chancery Mortgage Services Ltd, equating to approximately £220 per referral

**Bywater Place, London, SE16**

Approximate Area = 814 sq ft / 75.6 sq m

For identification only - Not to scale



Floor plan produced in accordance with RICS Property Measurement Standards incorporating International Property Measurement Standards (IPMS2 Residential). © richrecom 2022. Produced for Oliver Jacques. REF: 865866

- **Tenure:** Leasehold
- **Ground Rent:** n/a
  - Fixed
- **Service Charge:** £2,900 pa
- **Lease Expires:** 2114
- **Shared Ownership:** No
- **Council Tax Band:** Southwark E
  - £1,948.88