



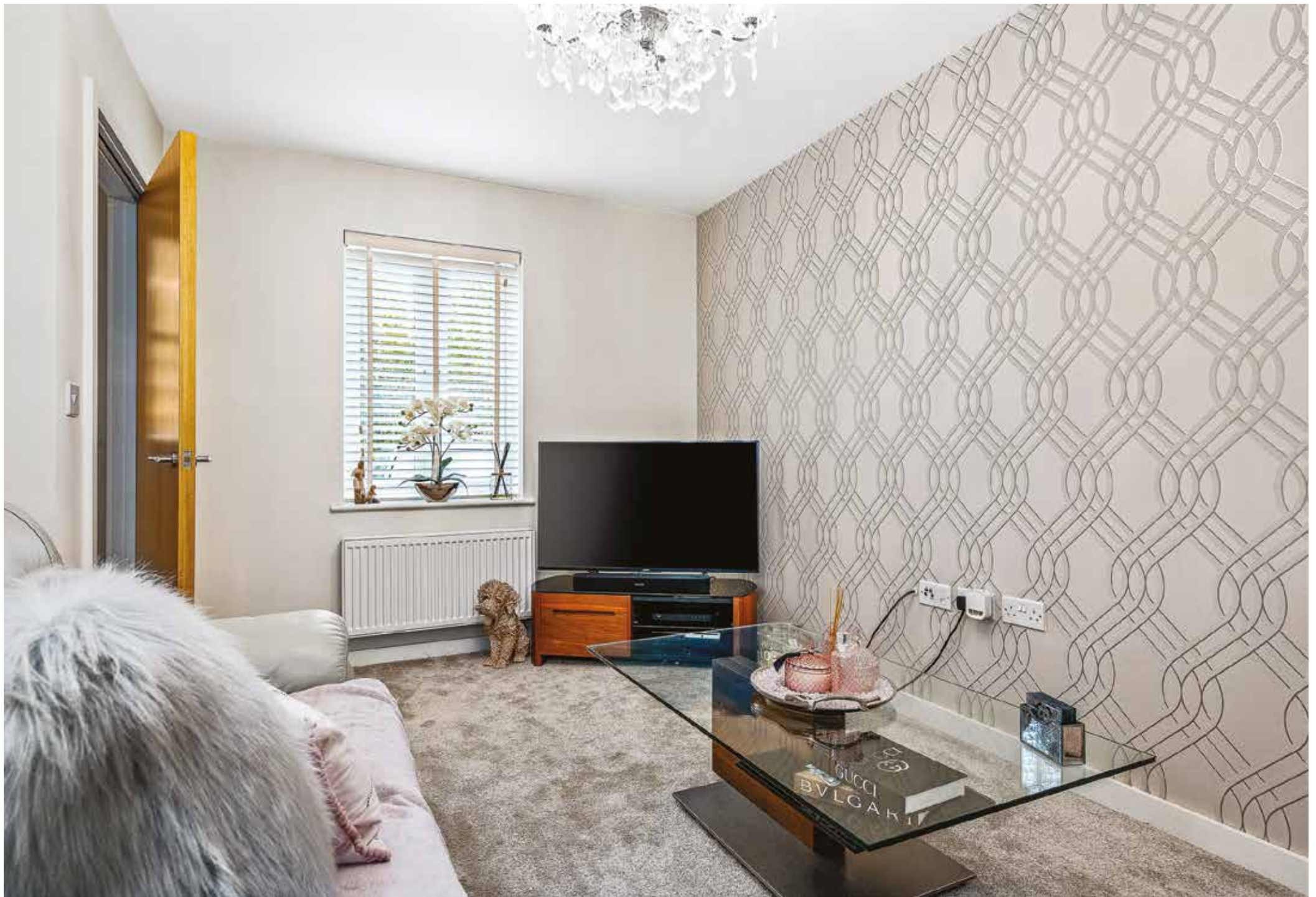
6 Copper Beech Avenue
Takeley | Bishop's Stortford | CM22 6FR

Step inside

6 Copper Beech Avenue

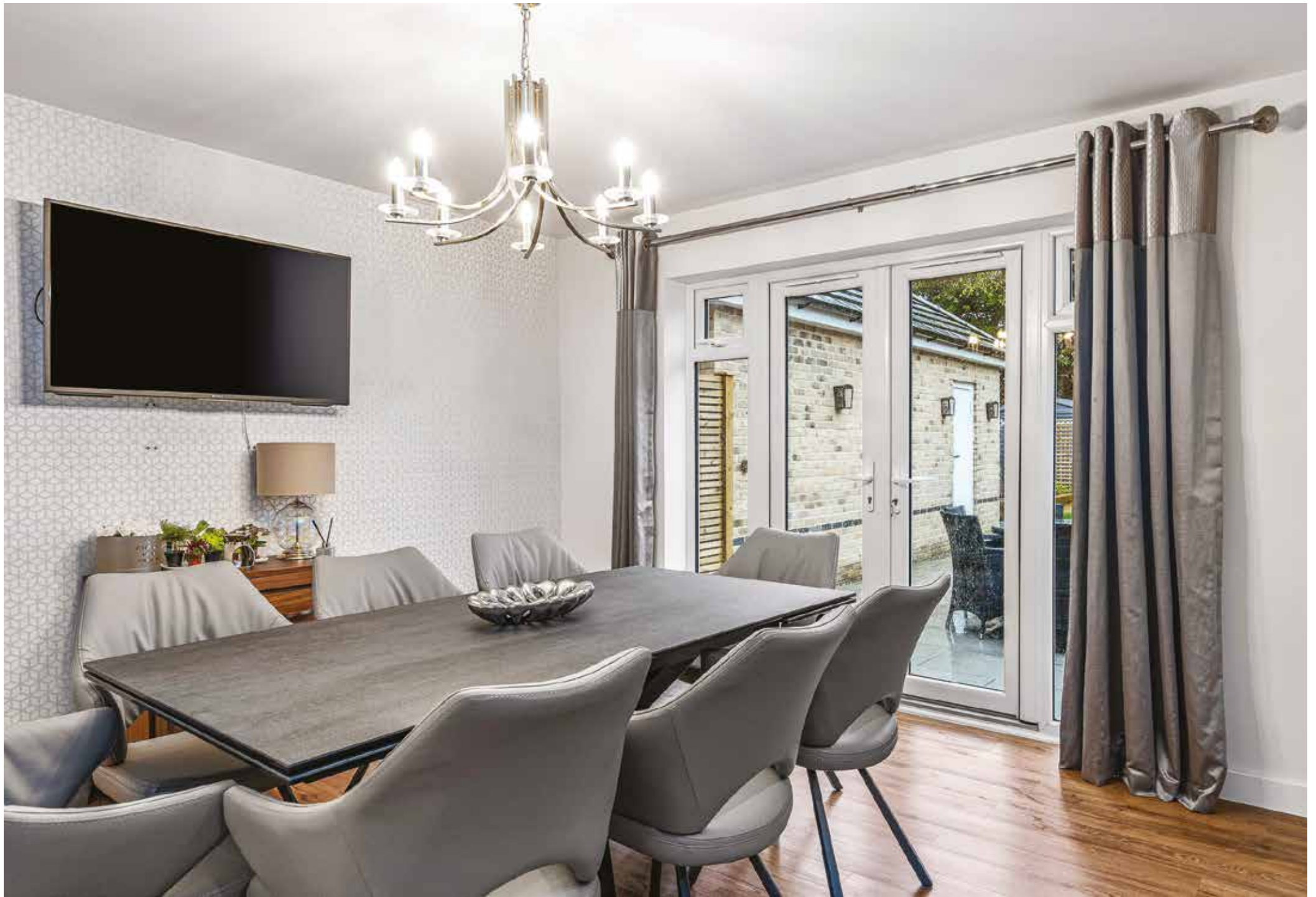
Situated in a gated development of just 13 properties is this superbly presented five bedroom detached family home located conveniently for both local amenities and commuters. In brief the accommodation on the ground floor offers a large open plan lounge/kitchen/living area, study/playroom and cloakroom. On the first floor there are three bedrooms, en-suite and dressing area to master, two further good size bedrooms and a family bathroom. On the second floor there are two further bedrooms and an additional en-suite shower room. Externally the property benefits from both front and rear gardens, ample driveway parking and an oversized single garage.

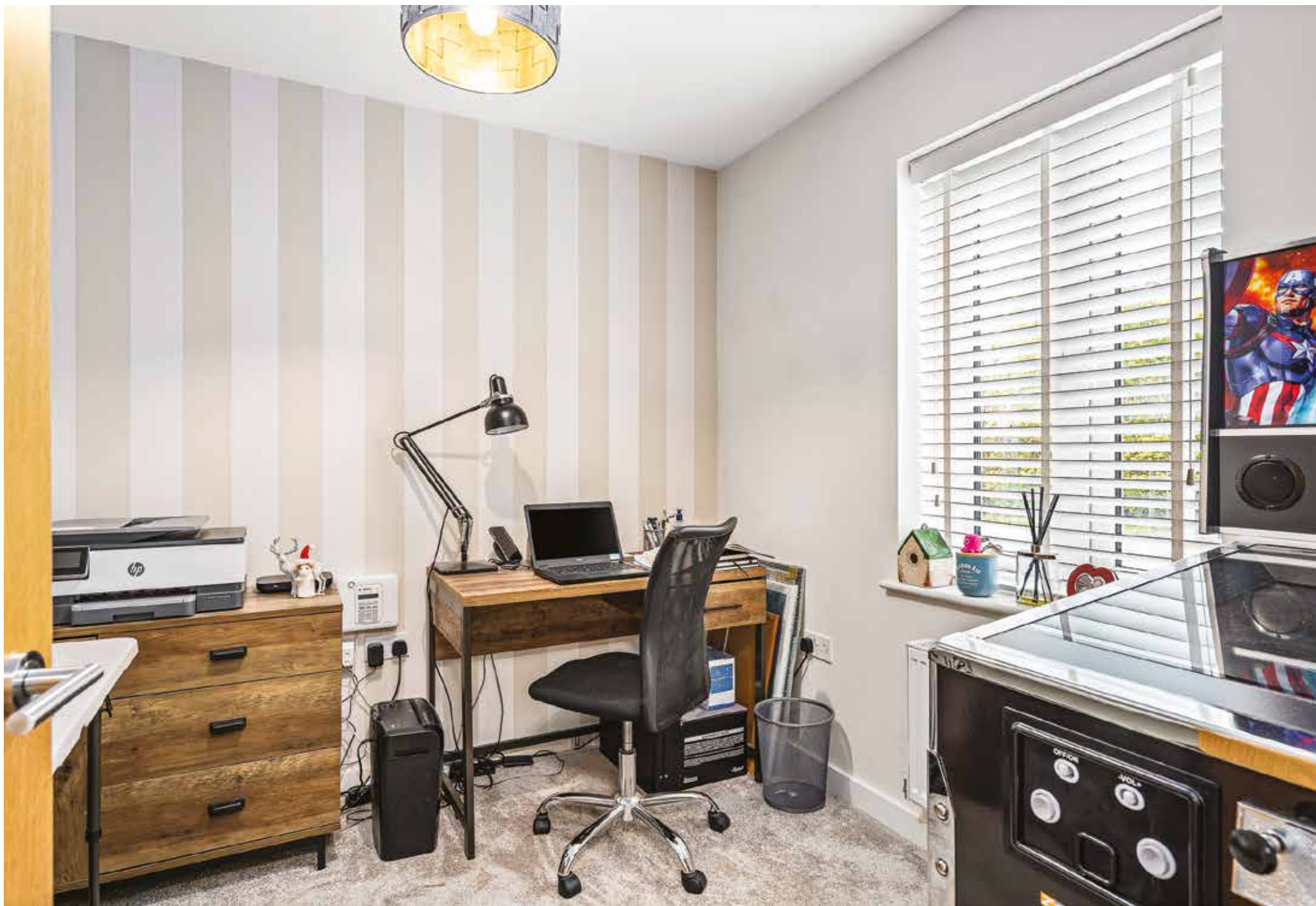






















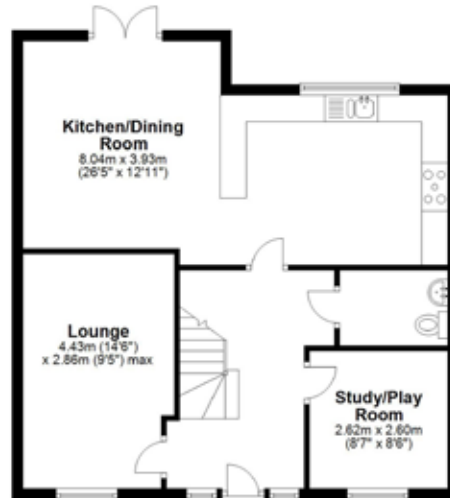




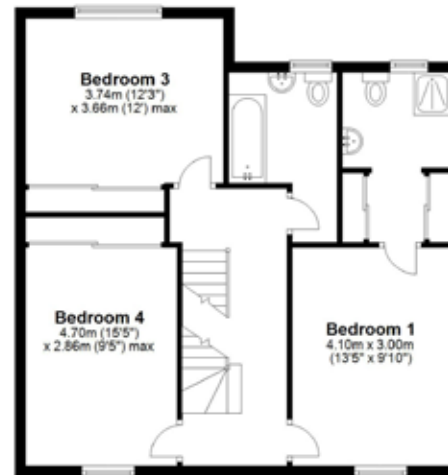
Second Floor
Approx. 39.3 sq. metres (423.5 sq. feet)



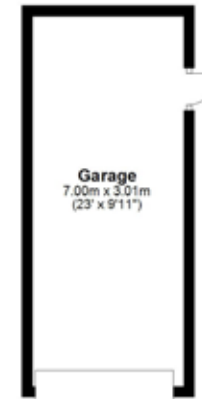
Ground Floor
Approx. 63.6 sq. metres (684.7 sq. feet)



First Floor
Approx. 63.8 sq. metres (687.1 sq. feet)



Outbuilding
Approx. 21.1 sq. metres (226.6 sq. feet)



Total area: approx. 187.9 sq. metres (2022.1 sq. feet)

FOR ILLUSTRATIVE PURPOSES ONLY. NOT TO SCALE.
Whilst every attempt has been made to ensure the accuracy of the floor plan shown, all measurements, positioning, fixtures, features, fittings and any other data shown are an approximate interpretation for illustrative purposes only and are not to scale. No responsibility is taken for any error, omission, miss-statement or use of data shown.
Property marketing provided by www.matthewkyle.co.uk

Council Tax Band F



Agents notes: All measurements are approximate and for general guidance only and whilst every attempt has been made to ensure accuracy, they must not be relied on. The fixtures, fittings and appliances referred to have not been tested and therefore no guarantee can be given that they are in working order. Internal photographs are reproduced for general information and it must not be inferred that any item shown is included with the property. For a free valuation, contact the numbers listed on the brochure. Copyright © 2022 Exclusively Group Real Estate. Registered in England. Company Reg No. 14052310 Registered Office: Imperial House Victoria Place Chelmsford CM1 1NY Exclusively Group Real Estate is a trading style of TEGRE Limited.



Exclusive Group Real Estate

Imperial House, Cottage Place, Victoria Road, Chelmsford, CM1 1NY

Tel: +44 (0)1245 200365 | exclusivelygroup.com