



149 Upper Richmond Road, Putney, London, SW15 2TX

t: 0208 788 8822

e: putney@allanfuller.co.uk

www.allanfuller.co.uk

## Whitnell Way London, SW15

A well-presented, bright and spacious second floor apartment set in a sought after development a short distance from the centre of Putney.

This exceptional one bedroom flat would ideally suit a first time buyer or investor, and comprises generous living room with space for dining, leading onto a private westerly facing balcony, with a separate well equipped kitchen, large double bedroom with built-in storage, bathroom and separate w.c. The property also benefits from double glazing, communal gardens and residents parking is available.

Located in a handy position a short stroll from Putney High Street, train and tube stations, as well as the green open spaces of Putney Heath. EPC - D Council Tax: Band B



£340,000

Leasehold



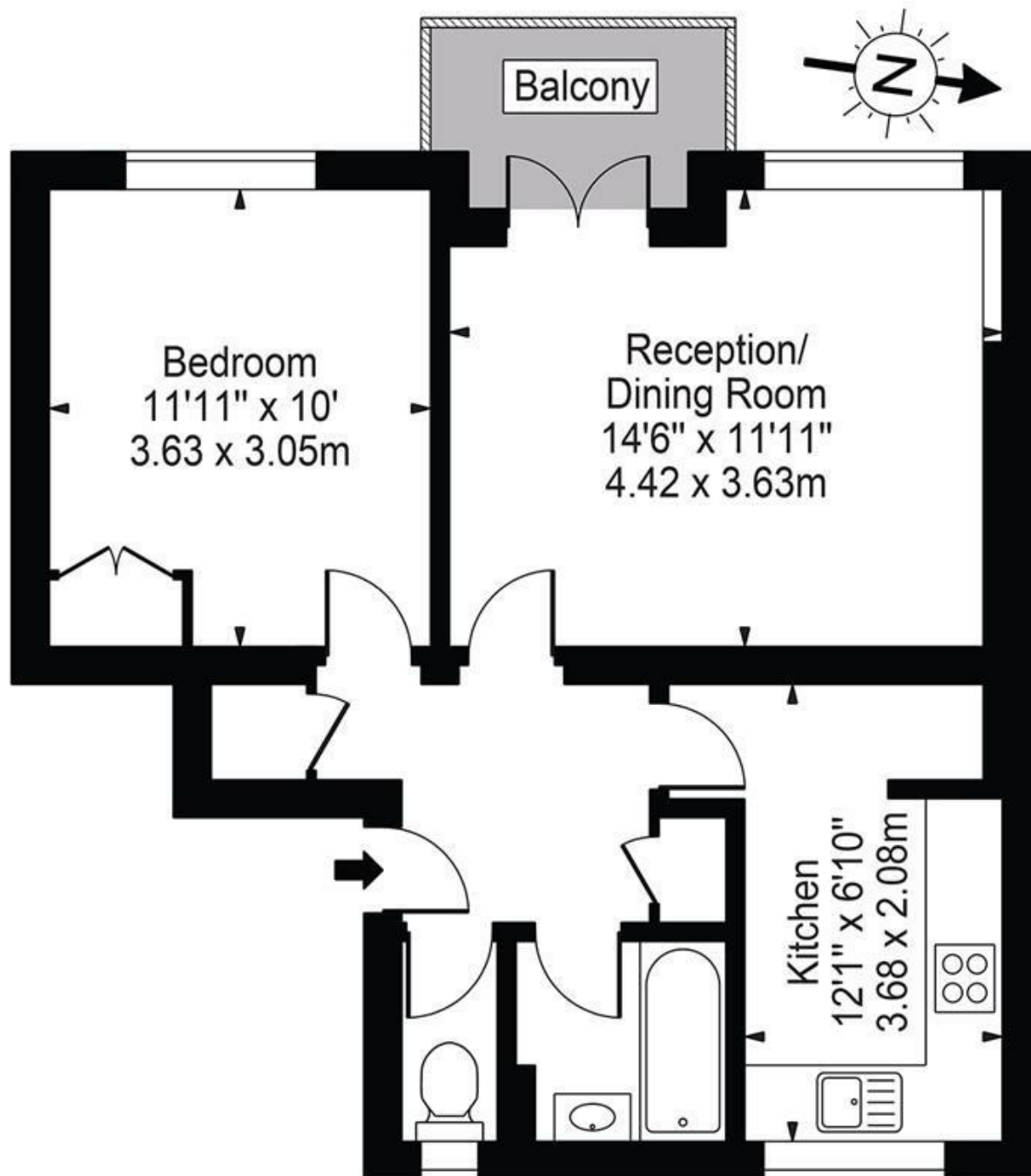






# Waldegrave House, SW15

Approx. Gross Internal Area 511 Sq Ft - 47.47 Sq M



Second Floor

ALLAN FULLER  
EST. 1983

©

For Illustration Purposes Only - Not To Scale Floor Plan by Mira Nikolova Photography

This floor plan should be used as a general outline for guidance only and does not constitute in whole or in part an offer or contract. Any intending purchaser or lessee should satisfy themselves by inspection, searches, enquiries and full survey as to the correctness of each statement. Any areas, measurements or distances quoted are approximate and should not be used to value a property or be the basis of any sale or let.

With regards to any information supplied by us in relation to lease, ground rent and service charge it is essential that you have this information checked by your solicitor. We have transmitted information supplied to us by the vendor of the property but we have not been able to inspect the lease to check its accuracy. Please note that we have not tested any of the equipment or utilities at this property, nothing in these particulars shall be deemed a statement that the property is in good condition or otherwise nor that any of the services or facilities are in good working order. Measurements are approximate they were taken with a sonic tape, are as accurate as possible and usually measured from the widest point of any room. Description provided herein represents the opinion of the author, is given in good faith but should not be constructed as statements of fact. The particulars and photograph are for guidance only.