

WAYNE & SILVER



1005 St Johns Wood Park, London, NW8 6NL

£2,495 Per Week





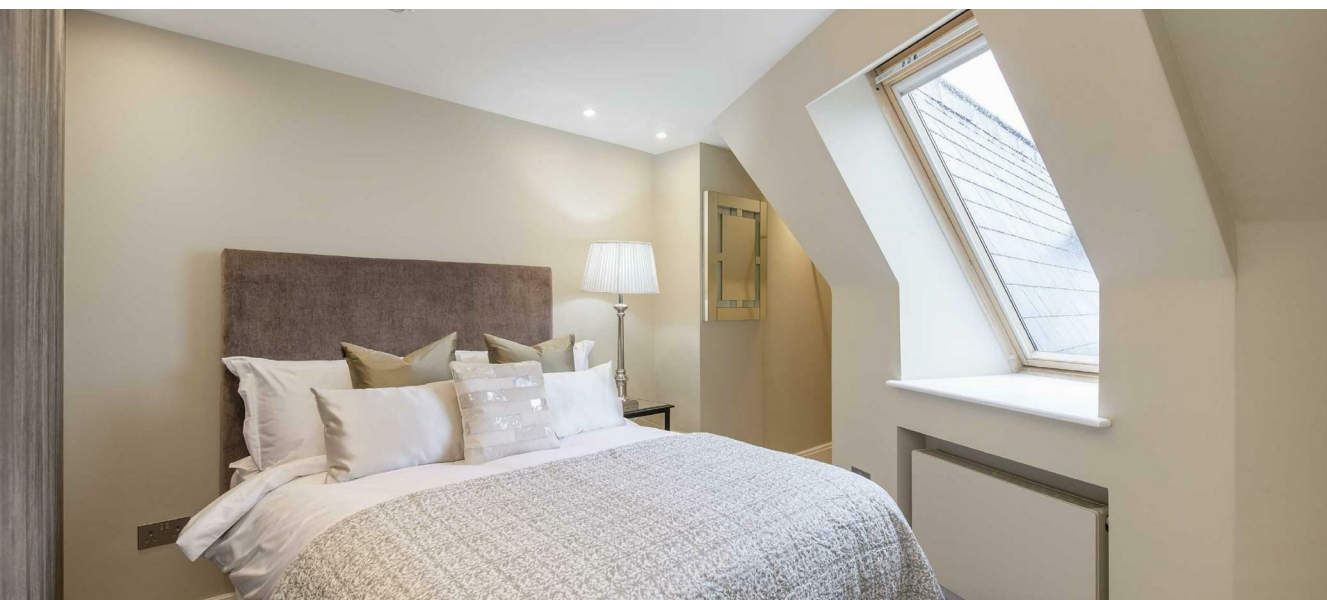
£2,495 Per Week

1005 St Johns Wood Park

London, NW8 6NL

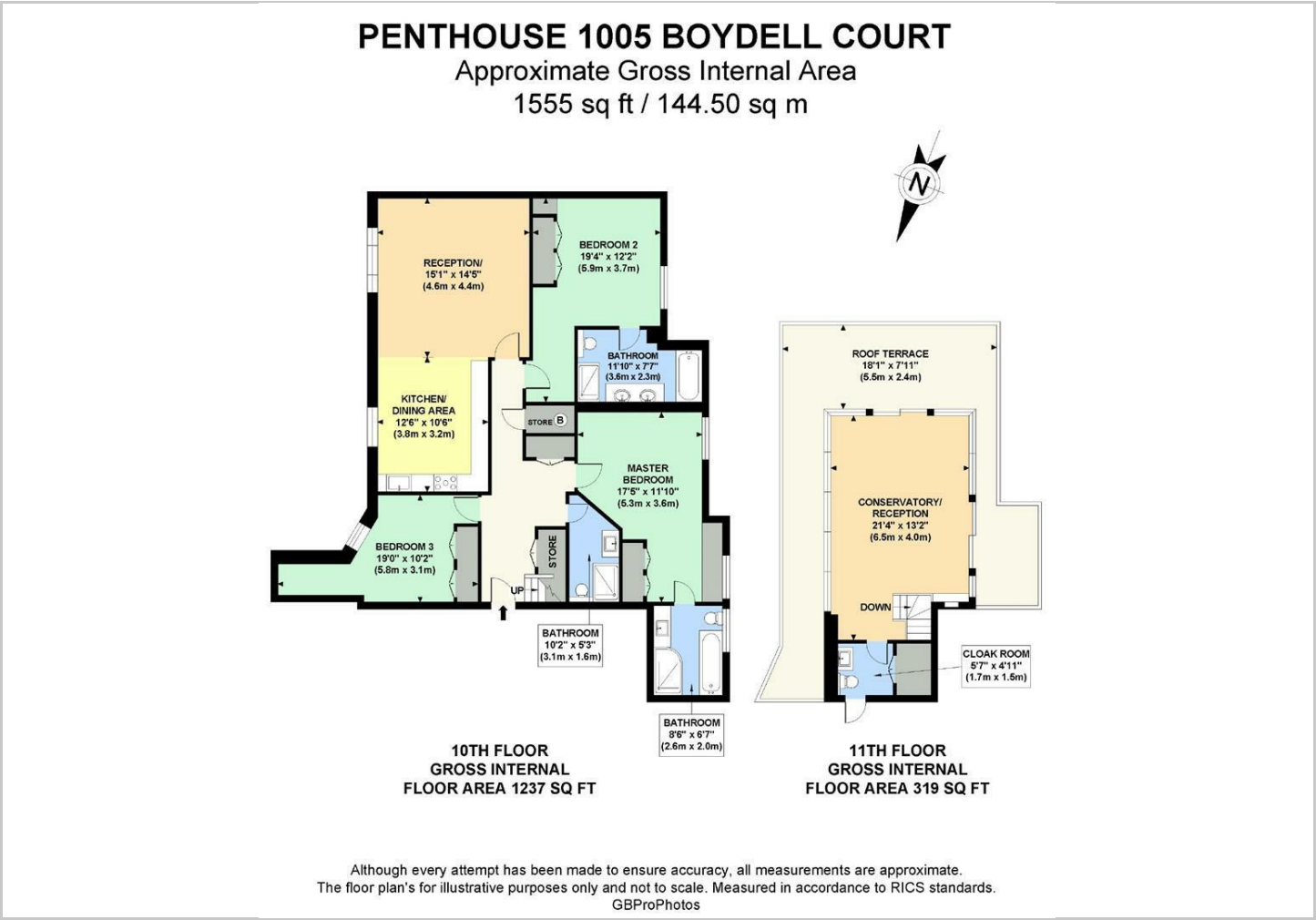
A beautiful 3 bedroom penthouse apartment over two floors situated within the Boydell Court Development. The tenth floor benefits from a large reception/dining room, fully integrated kitchen, three double bedrooms, (two with en suite bathrooms) and guest shower room, with stairs leading to the eleventh floor. The top floor comprises of a stunning conservatory/reception with panoramic views and access to a wrap around private roof terrace and a guest cloakroom. There is a 24 hour concierge, situated in a secure gated site with communal parking. The apartment is fully air conditioned and decorated to a very high standard. Boydell Court is conveniently located within easy distance to local amenities and transport facilities of St John's Wood and Swiss Cottage.







Floor Plans



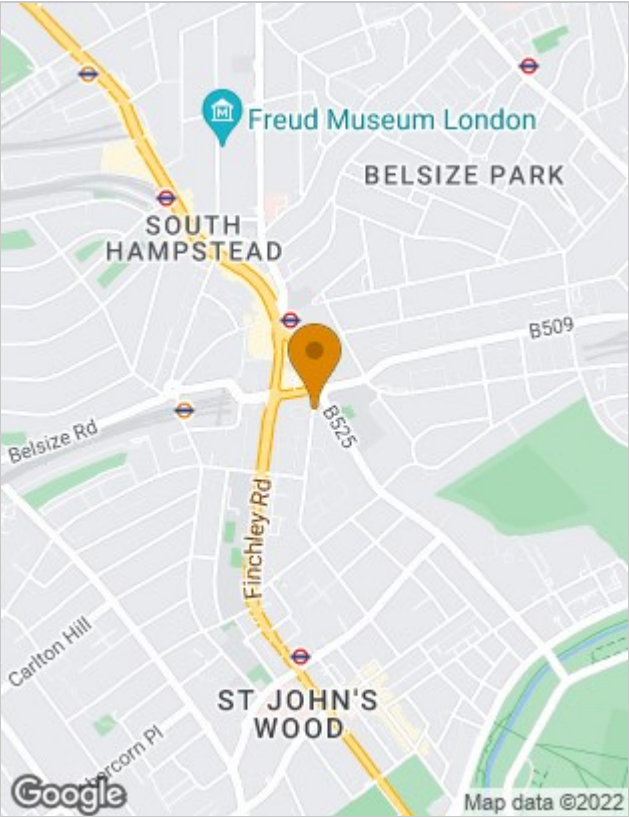
Viewing

Please contact our Wayne & Silver Lettings Office on 020 7431 4488 if you wish to arrange a viewing appointment for this property or require further information.

The particulars are set out as a general outline only for the guidance of intended purchasers or lessees, and do not constitute, any part of a contract. Nothing in these particulars shall be deemed to be a statement that the property is in good structural condition or otherwise nor that any of the services, appliances, equipment or facilities are in good working order. Purchasers should satisfy themselves of this prior to purchasing.

41 Heath Street, Hampstead, London, NW3 6UA
Tel: 020 7431 4488 Email: info@wayne-silver.com wayne-silver.com

Location Map



Energy Performance Graph

