



Central Hill SE19
£1,350pcm

0208 702 9333
pedderproperty.com

pedder



In general

- One bed apartment
- Ample character & charm
- Wood flooring
- High ceilings
- Fitted stoarge
- Flexible furnishings

In detail

A well-presented and proportioned raised ground floor one bedroom conversion in Upper Norwood to rent.

Finished to a high standard throughout and comprising a modern semi-open planned kitchen / 16ft reception room with high ceilings and solid wood flooring, good sized double bedroom with fitted storage and bathroom with shower above bath.

Complete with allocated parking to the rear, double glazed windows and ample charm throughout.

Central Hill, SE19 is ideally located to the many amenities of the “Triangle” and transport links of Gipsy Hill Overground station and local bus links into the surrounding areas.

The perfect rental for a couple seeking the additional living space with ample character and charm.

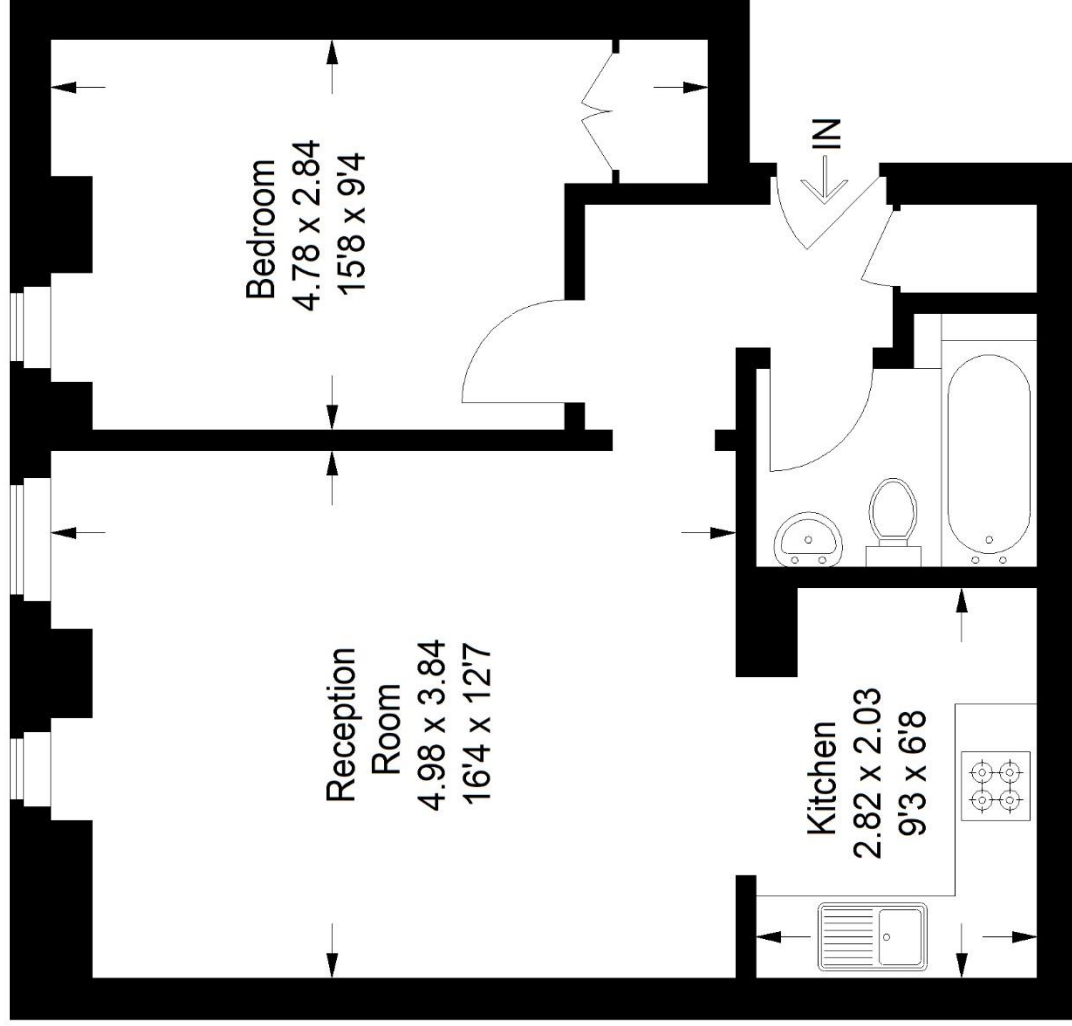
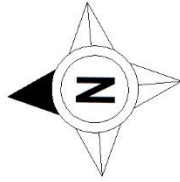
EPC: C | Council Tax Band: B | Flexible furnishings | Call the Pedder lettings team now to arrange a viewing



Floorplan

Central Hill, SE19

Approximate Gross Internal Area
46.6 sq m / 502 sq ft



Ground Floor

Copyright www.pedderproperty.com © 2022
 These plans are for representation purposes only as defined by RICS - Code of Measuring Practice. Not drawn to Scale. Windows and door openings are approximate. Please check all dimensions, shapes and compass bearings before making any decisions reliant upon them.

Score	Energy rating	Current	Potential
92+	A		
81-91	B		
69-80	C	76 C	80 C
55-68	D		
39-54	E		
21-38	F		
1-20	G		

Pedder Property Ltd trading as Pedder for themselves and for the vendor/landlord of this property whose agents they are, give notice that (1) these particulars do not constitute any part of an offer or contract, (2) all statements contained within these particulars are made without responsibility on the part of Pedder or the vendor/landlord, (3) whilst made in good faith, none of the statements contained within these particulars are to be relied upon as a statement of representation or fact, (4) any intending purchaser/tenant must satisfy him/herself by inspection or otherwise as to the correctness of each of the statements contained within these particulars, (5) the vendor/landlord does not make or give either Pedder or any person in their employment any authority to make or give representation or warranty whatsoever in relation to this property.