

WAYNE & SILVER



9 Hill Rise

Hampstead Garden Suburb, NW11 6LX

Asking Price £1,095,000

An outstanding three bedroom semi-detached house (1294 Sq Ft) situated on the north side of Hampstead Garden Suburb.

The property currently offers accommodation over two floors with scope to extend to the rear and convert the existing loft space, subject to the usual consents. This bright and versatile family home comprises of Reception Room, Dining Room, Open Plan Kitchen, principal bedroom with en-suite shower room, two further double bedrooms, family bathroom and 91 Ft Garden.

Further benefits include, Off street Parking, Garage Space (unconverted), great storage space throughout and Situated within walking distance to the local shops and amenities of Market Place and the nearby transport facilities of East Finchley bus and Underground station.

Viewing

Please contact our Hampstead Sales Office on 020 7431 4488 if you wish to arrange a viewing appointment for this property or require further information.



3



2



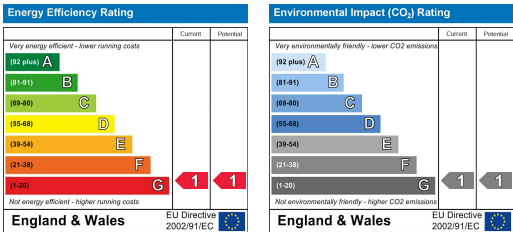
2



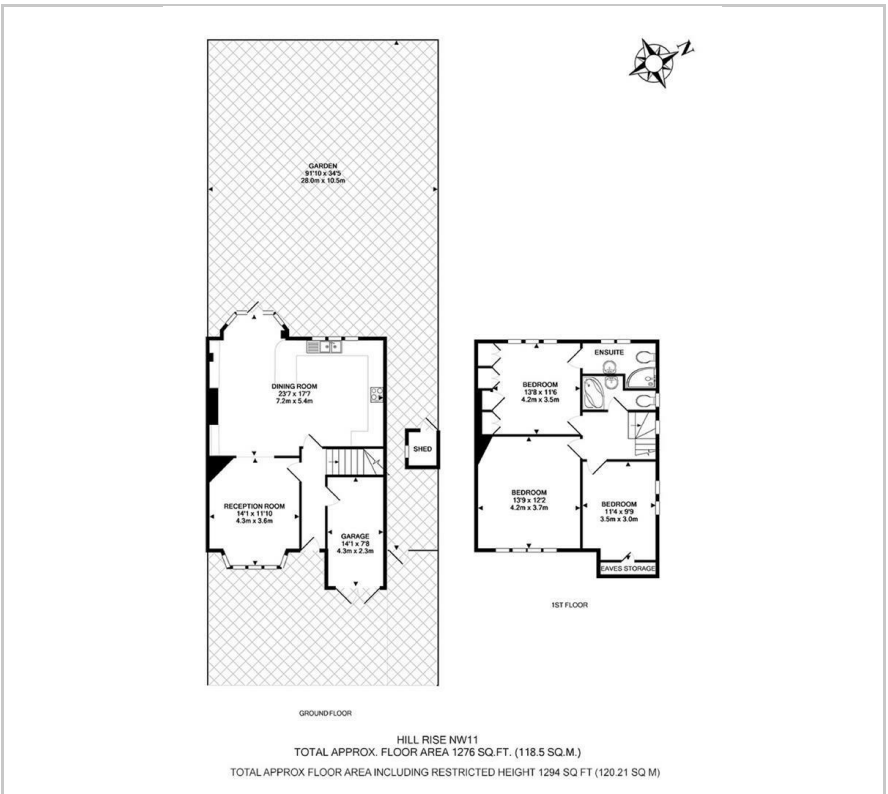
G



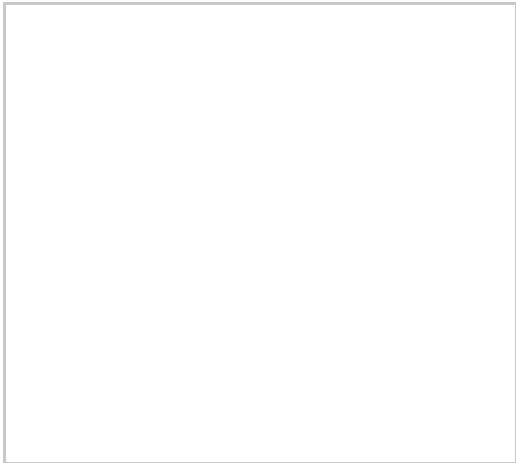
Energy Efficiency Graph



Floor Plan



Area Map



These particulars, whilst believed to be accurate are set out as a general outline only for guidance and do not constitute any part of an offer or contract. Intending purchasers should not rely on them as statements of representation of fact, but must satisfy themselves by inspection or otherwise as to their accuracy. No person in this firms employment has the authority to make or give any representation or warranty in respect of the property.