

18 Old Oak Common Lane  
Acton  
London  
W3 7EL  
T: 020 8749 9798  
E: sales@churchillmathesons.com  
www.churchillmathesons.com

**Churchill & Mathesons**

East Acton Lane, London W3 7NZ

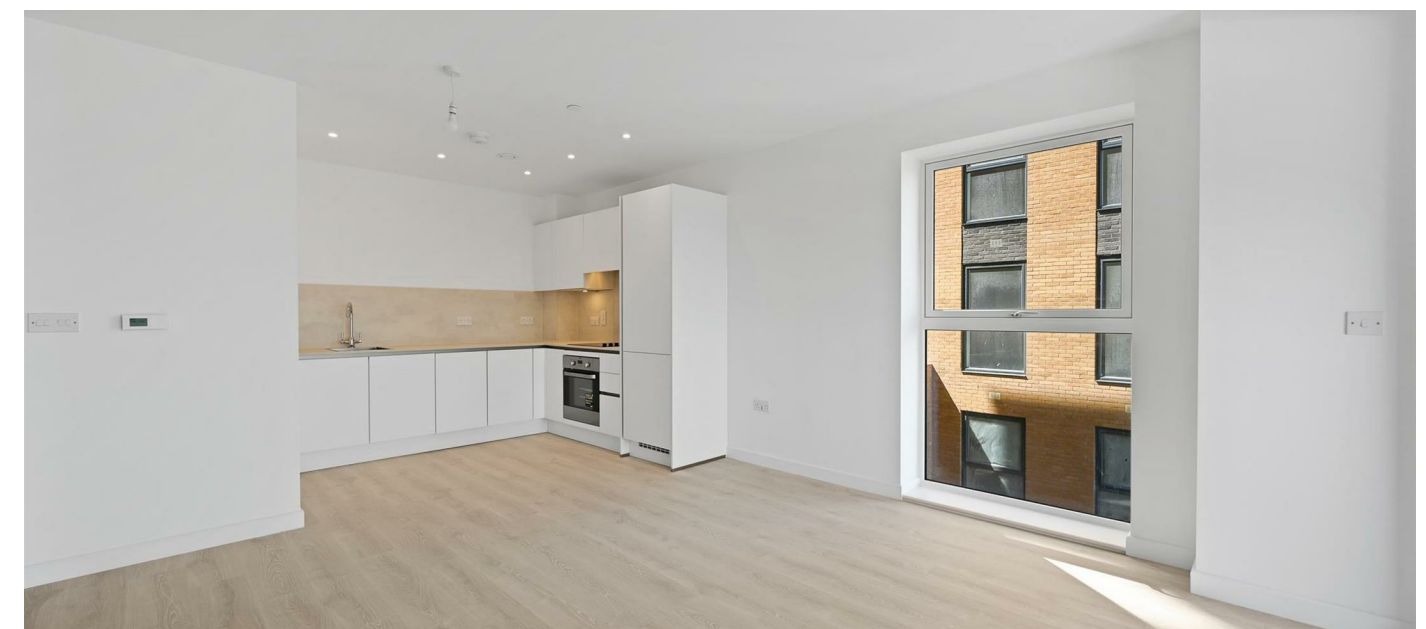
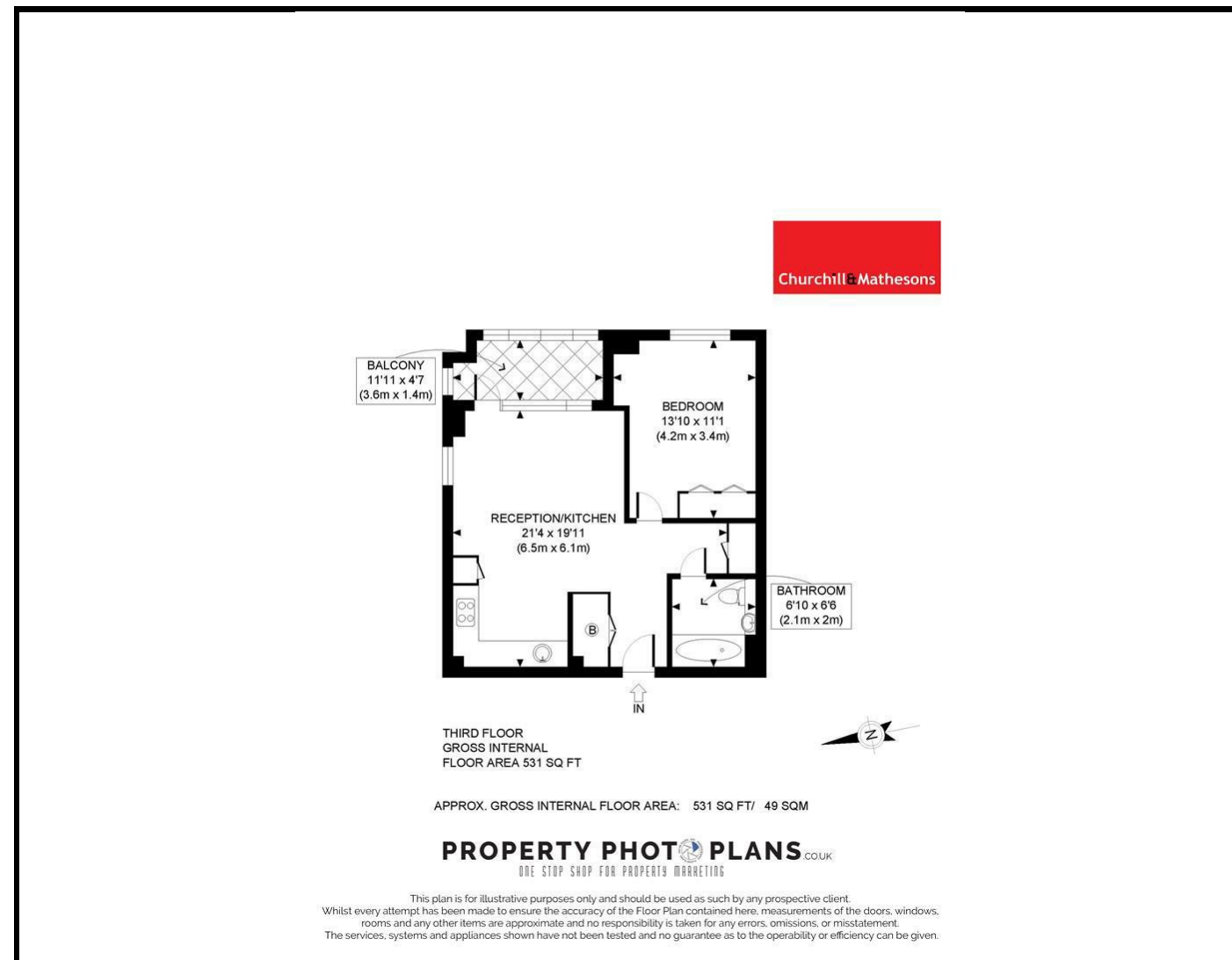
£507 Per Week



**KEY FEATURES:**

- Brand new 1 bedroom flat in this iconic building
- Modern fully fitted kitchen with integrated appliances
- Open plan reception room with balcony to a roof terrace
- FURNISHED/UNFURNISHED
- AVAILABLE NOW
- Winter Garden Balcony

An unique opportunity to rent this spectacular and brand new 1 bedroom flat in this iconic building in Acton built by Barratt Homes  
Spacious 1 bedroom flat with built in wardrobe  
Modern fully fitted kitchen with integrated appliances  
Open plan reception room with balcony doors opening to a Winter Garden Balcony  
Stylish bathroom  
Excellent location with an array of transport links  
FURNISHED/UNFURNISHED ~ AVAILABLE END NOW  
\* Photos are only examples



Energy Efficiency Rating		
	Current	Potential
Very energy efficient - lower running costs		
(92 plus) <b>A</b>		
(81-91) <b>B</b>		
(69-80) <b>C</b>		
(55-68) <b>D</b>		
(39-54) <b>E</b>		
(21-38) <b>F</b>		
(1-20) <b>G</b>		
Not energy efficient - higher running costs		
<b>England &amp; Wales</b>	EU Directive 2002/91/EC	

Environmental Impact (CO <sub>2</sub> ) Rating		
	Current	Potential
Very environmentally friendly - lower CO <sub>2</sub> emissions		
(92 plus) <b>A</b>		
(81-91) <b>B</b>		
(69-80) <b>C</b>		
(55-68) <b>D</b>		
(39-54) <b>E</b>		
(21-38) <b>F</b>		
(1-20) <b>G</b>		
Not environmentally friendly - higher CO <sub>2</sub> emissions		
<b>England &amp; Wales</b>	EU Directive 2002/91/EC	

Whilst every effort is made to give a fair description, the accuracy of these particulars is not guaranteed, neither do they constitute an offer or contract.

**CHURCHILL & MATHESONS ESTATE AGENTS** have not tested any apparatus, equipment, fitting or services and so cannot verify that they are in working order. The buyer is advised to obtain verification from their solicitor or surveyor. Measurements are correct to within +/-6 A sonic tape is used. None of the statements contained in these particulars or any of our properties are to be relied upon as a representation of fact.