



Treeview Close SE19  
£725,000

0208 702 9333  
[pedderproperty.com](http://pedderproperty.com)

**pedder**





# In general

- 1710 sq ft / 158.9 sq m
- Four / five bedrooms
- Garage and off street parking
- 23ft 4 double aspect reception room
- En suite shower room
- Spacious kitchen with breakfast bar
- Small, quiet cul de sac
- No onward chain

# In detail

A generously proportioned four / five double bedroom end of terrace house forming part of a small residential cul de sac nearby central Crystal Palace.

The property occupies a corner plot and is the largest in this location, offering a new owner the opportunity to upgrade or remodel to suit. The accommodation totals 1710 sq ft / 158.9 sq m and includes a spacious kitchen with plenty of storage and a breakfast bar, two / three reception rooms, a downstairs WC, master bedroom with a Juliette balcony and en suite, and an integral garage which lends to conversion (STP) if desired. Externally there is ample off street parking and a mature rear garden with side access.

Treeview Close is primarily served by Crystal Palace and Gipsy Hill rail links, but also offers proximity to popular Cypress Primary School, Westow Park, and South Norwood Lake and grounds.

No onward chain.

EPC: D





# Floorplan

## Treeview Close SE19

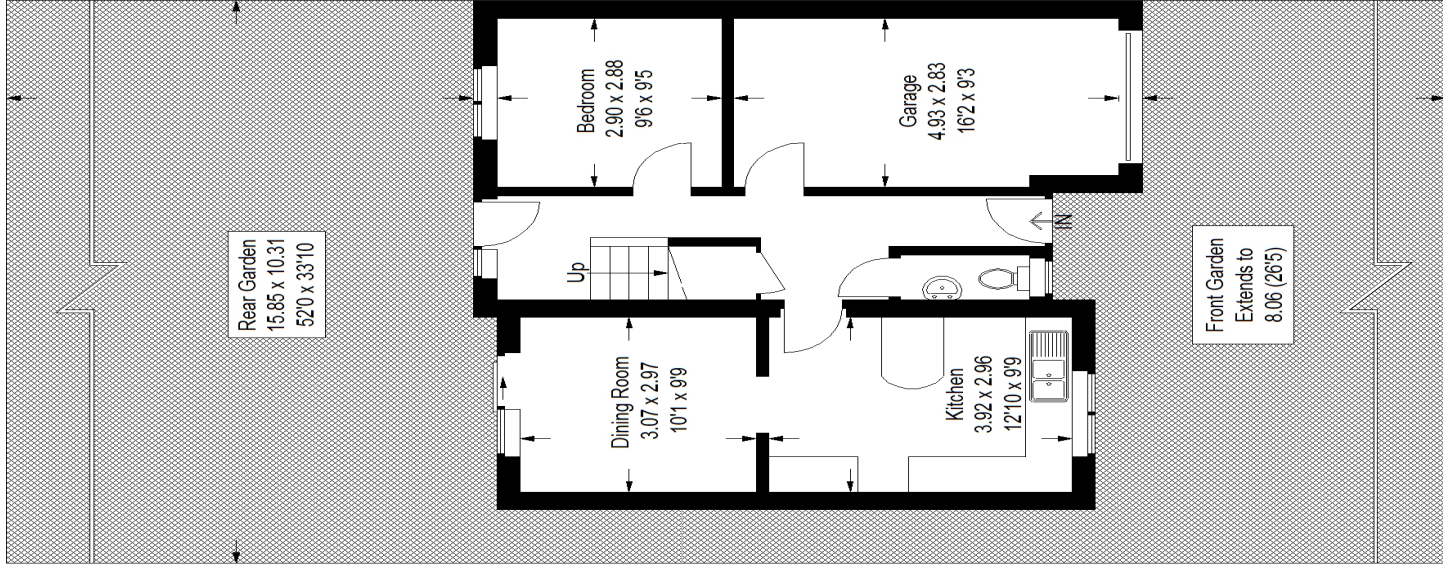
Approximate Gross Internal Area

Ground Floor (Including Garage) = 59.3 sq m / 638 sq ft

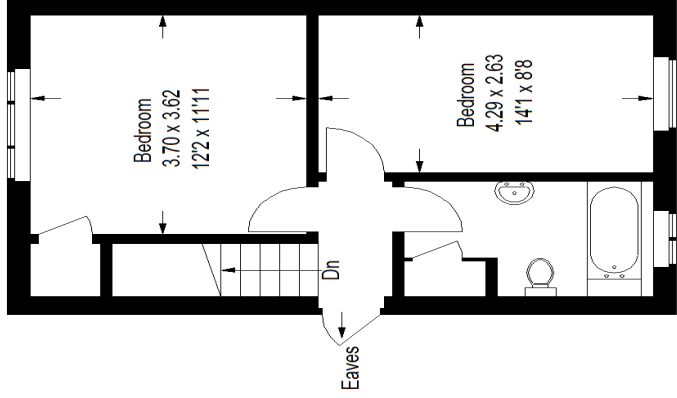
First Floor = 61.4 sq m / 661 sq ft

Second Floor = 38.2 sq m / 411 sq ft

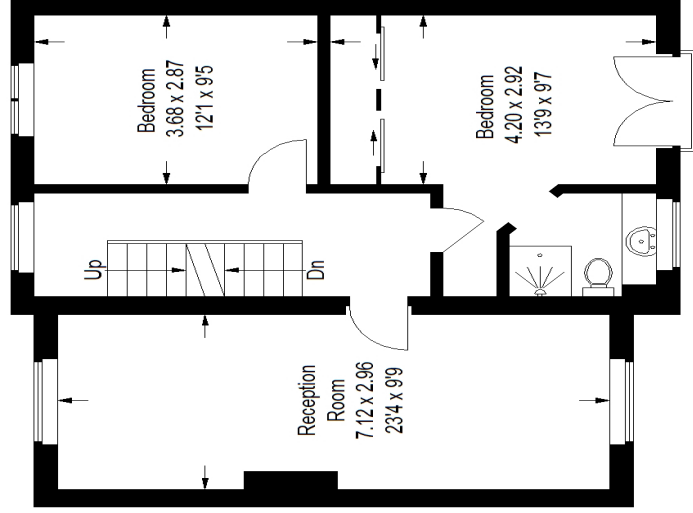
Total = 158.9 sq m / 1710 sq ft



Ground Floor



Second Floor



First Floor

Copyright www.pedderproperty.com © 2021

These plans are for representation purposes only as defined by RICS - Code of Measuring Practice. Not drawn to Scale. Windows and door openings are approximate. Please check all dimensions, shapes and compass bearings before making any decisions reliant upon them.

Score	Energy rating	Current	Potential
92+	A		
81-91	B		
69-80	C		
55-68	D	64   D	80   C
39-54	E		
21-38	F		
1-20	G		

Pedder Property Ltd trading as Pedder for themselves and for the vendor/landlord of this property whose agents they are, give notice that (1) these particulars do not constitute any part of an offer or contract, (2) all statements contained within these particulars are made without responsibility on the part of Pedder or the vendor/landlord, (3) whilst made in good faith, none of the statements contained within these particulars are to be relied upon as a statement of representation or fact, (4) any intending purchaser/tenant must satisfy him/herself by inspection or otherwise as to the correctness of each of the statements contained within these particulars, (5) the vendor/landlord does not make or give either Pedder or any person in their employment any authority to make or give representation or warranty whatsoever in relation to this property.