



SUPERB FIVE/SIX BEDROOM THREE BATHROOM EDWARDIAN FAMILY HOME

Berks Hill, Chorleywood, Hertfordshire, WD3 5AG

ROBSONS

SUPERB FIVE/SIX BEDROOM THREE BATHROOM EDWARDIAN FAMILY HOME IN CENTRAL CHORLEYWOOD

LIVING ROOM • KITCHEN • BREAKFAST ROOM • DINING ROOM • CONSERVATORY • UTILITY • GUEST CLOAKROOM • PRINCIPAL BEDROOM WITH EN-SUITE • STUDY • FOUR ADDITIONAL BEDROOMS • BEDROOM SIX/KITCHENETTE • BATHROOM • SHOWER ROOM • DRIVEWAY • ATTRACTIVE REAR GARDEN

Robsons are pleased to showcase this attractive five/six bedroom Edwardian property situated in the heart of Chorleywood village and set over three floors.

The welcoming entrance hall leads you through to the main accommodation comprising of a living room to the front with a bay window and feature fireplace. The large kitchen has a generous range of wall and base units, with a gas oven and hob, dishwasher, space for appliances and a picture window overlooking the garden, together with a door to the utility room which has a sink unit and a door to the rear garden.

There is also a breakfast room, a dining room with a feature fireplace and double doors through to the conservatory. The ground floor is completed by a guest cloakroom and under stairs storage.





To the first floor is the principal bedroom with an en-suite bathroom, two additional bedrooms, a study, the family bathroom and stairs to the second floor where there are two further bedrooms, a bedroom/kitchenette and a shower room. The accommodation on the second floor is ideal for a self contained annexe.

The property has a pretty front garden and a driveway providing off street parking. The attractive rear garden is south-east facing and mainly laid to lawn with large patio area adjacent to the property and a further covered seating area in the garden.

This lovely property has many additional features to include high ceilings and ornate cornicing.

Chorleywood Village's facilities include a wide choice of shops, coffee houses and restaurants. Marks & Spencer and Waitrose are available in Rickmansworth. The area is also well served for sought after state and private schools for all ages. Leisure facilities include golf courses, cricket, football clubs, horse riding and fitness centres, together with Chorleywood Common and Rickmansworth Aquadrome. The Metropolitan and Main lines at Chorleywood Station offer a frequent service into London and beyond. The M25 is easily accessible via Junctions 17 and 18.

Tenure: Freehold

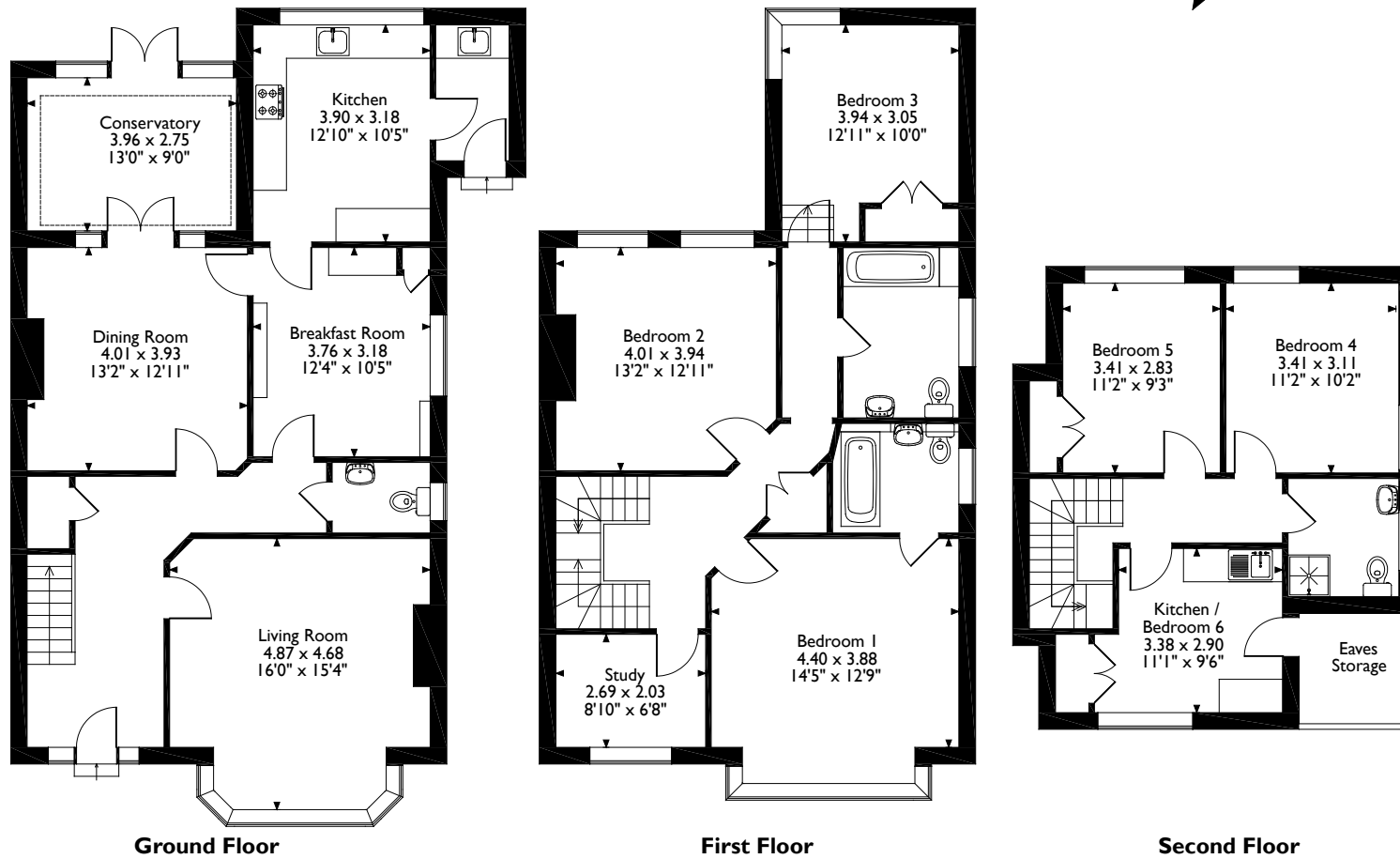
Local Authority: Three Rivers District Council

Council Tax: Band G

Energy Efficiency Rating: Band E



Berks Hill Chorleywood
Approximate Gross Internal Area
222 Sq M/2389 Sq Ft



Please note that the location of doors, windows and other items are approximate and this floorplan is to be used for illustrative purposes only. Unauthorized reproduction is prohibited.

ROBSONS

2 New Parade, Chorleywood, Hertfordshire, WD3 5NJ
Tel: 01923 285525 Email: chorleywood@robsonswb.com

www.robsonswb.com

www.the-londonoffice.co.uk
40 ST JAMES'S PLACE SW1

Important notice: Robsons, their clients and any joint agents give notice that 1: They are not authorised to make or give any representations or warranties in relation to the property either here or elsewhere, either on their own behalf or on behalf of their client or otherwise. They assume no responsibility for any statement that may be made in these particulars. These particulars do not form part of any offer or contract and must not be relied upon as statements or representations of fact. 2: Any areas, measurements or distances are approximate. Plot sizes and dimensions are taken from Promap and are approximate. The text, photographs and plans are for guidance only and are not necessarily comprehensive. It should not be assumed that the property has all necessary planning, building regulation or other consents and Robsons have not tested any services, equipment or facilities. Purchasers must satisfy themselves by inspection or otherwise.