



CHATTERTON | REES



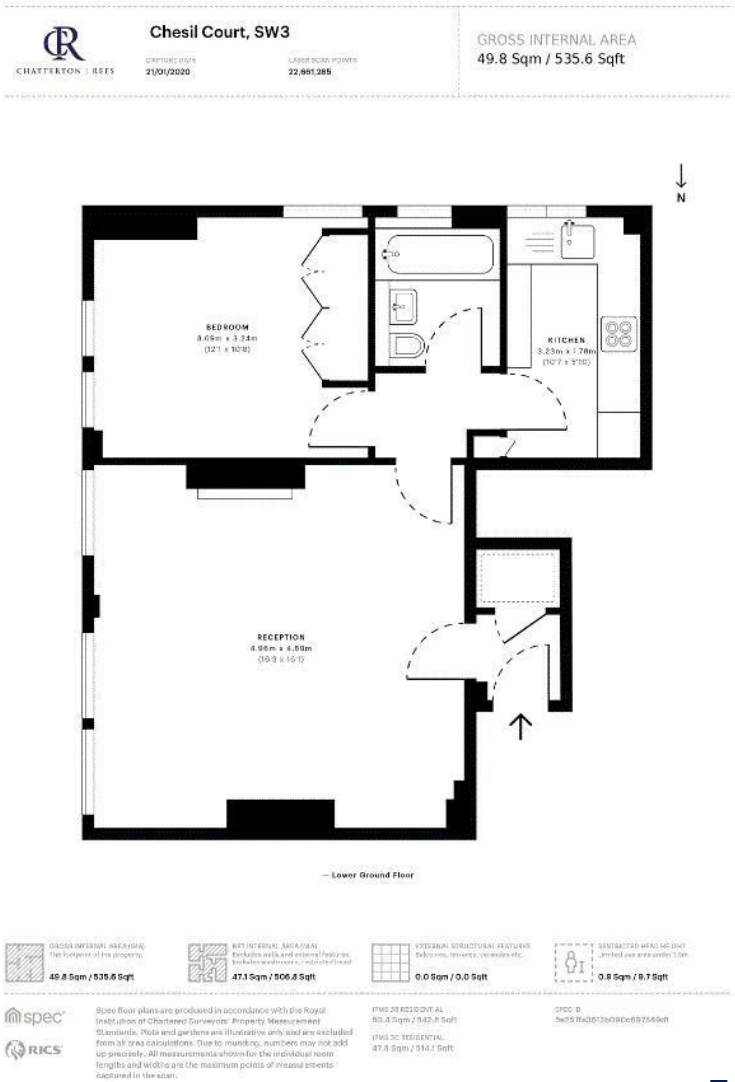
102 Chesil Court, London, SW3 5QS

Asking price £750,000

A beautifully presented one bedroom apartment close to the Kings Road in SW3 Chelsea. The property has been recently refurbished and is stunning throughout. Benefiting from a modern finish with a large living room and bedroom with ample storage. With a long lease, porter and with a desired location the property would lend itself nicely to a first time buyer, pied a terre or a buy to let.

It is located only short distance from all of the shops on the Kings Road and very close to Sloane Square itself.

Floor Plan



— Lower Ground Floor



GROSS INTERNAL AREA (GIA)

49.8 Sqm / 535.6 Sqft



NET INTERNAL AREA (NIA)

47.1 Sqm / 506.8 Sqft



EXTERNAL STRUCTURAL PARTITIONS

0.0 Sqm / 0.0 Sqft



SMALL AREA (S.A.)

0.8 Sqm / 8.7 Sqft



State floor plans are produced in accordance with the Royal Institution of Chartered Surveyors' Property Measurement Standards. Plans and gardens are illustrative only and are excluded from all area calculations. Due to rounding, numbers may not add up precisely. All measurements shown for the individual rooms lengths and widths are the maximum points of measurement captured in the scan.



RICS

ITWG 28 E222 DVT AL

50.4 Sqm / 542.6 Sqft

ITWG 2C T05 G E222 AL

47.8 Sqm / 514.7 Sqft

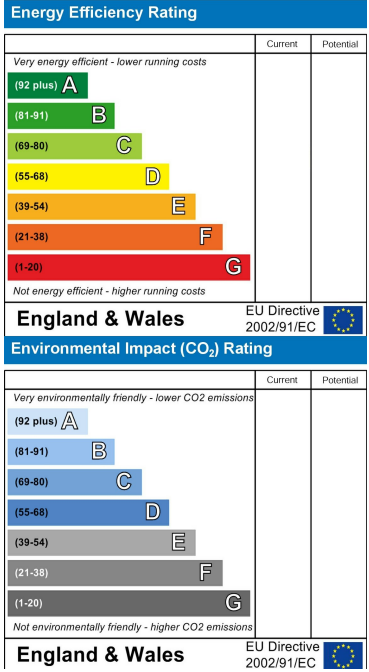
SPCC B

5m75 Bm307280Dm687558m

Area Map



Energy Efficiency Graph



These particulars, whilst believed to be accurate are set out as a general outline only for guidance and do not constitute any part of an offer or contract. Intending purchasers should not rely on them as statements of representation of fact, but must satisfy themselves by inspection or otherwise as to their accuracy. No person in this firm's employment has the authority to make or give any representation or warranty in respect of the property.