



Palace Road SW2
£359,950

0208 702 9888
pedderproperty.com

pedder



In general

- One double bedroom
- Top floor
- Period conversion
- Chain free
- EPC: D

In detail

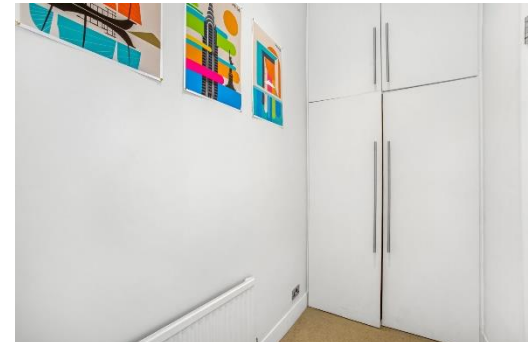
A charming one double bedroom conversion on the top floor of this beautiful period building on this desirable residential street in Tulse Hill.

Benefitting from over 470 sq ft of internal space comprising of a 14ft x 12ft reception room, double bedroom with storage, modern bathroom and a separate kitchen.

Nearby amenities include the new Picture House Cinema on Norwood Road and the excellent Brockwell Park towards Herne Hill.

Palace Road is ideally located for access into The City and West End via Tulse Hill (0.4 miles) offering regular services into London Bridge (20 mins) and Wimbledon (15 mins) as well as additional Thameslink services into Elephant & Castle, London Blackfriars and St Pancras.

EPC D.



Floorplan

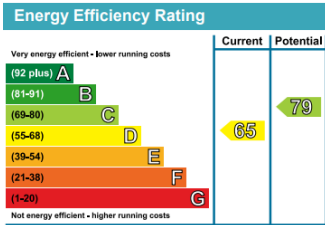
Palace Road, SW2

Approximate Gross Internal Area
50.5 sq m / 544 sq ft



First Floor

Copyright www.pedderproperty.com © 2020
These plans are for representation purposes only as defined by RICS - Code of Measuring Practice. Not drawn to Scale. Windows and door openings are approximate. Please check all dimensions, shapes and compass bearings before making any decisions reliant upon them.



Pedder Property Ltd trading as Pedder for themselves and for the vendor/landlord of this property whose agents they are, give notice that (1) these particulars do not constitute any part of an offer or contract, (2) all statements contained within these particulars are made without responsibility on the part of Pedder or the vendor/landlord, (3) whilst made in good faith, none of the statements contained within these particulars are to be relied upon as a statement of representation or fact, (4) any intending purchaser/tenant must satisfy him/herself by inspection or otherwise as to the correctness of each of the statements contained within these particulars, (5) the vendor/landlord does not make or give either Pedder or any person in their employment any authority to make or give representation or warranty whatsoever in relation to this property.