



CHATTERTON | REES



40 Whitelands House, Cheltenham Terrace, London SW3
4QY

£1,350,000 Subject To Contract

This beautifully renovated flat offers far reaching views over Chelsea. The apartment has been thoughtfully designed, creating a sophisticated and spacious home. Measuring 639 square feet, the flat is generously planned with a large bedroom, sitting room and kitchen, accompanied by ample storage space. Whitelands is a highly sought-after portered building with a private communal garden and two lifts. It is located on Cheltenham Terrace, which is a stone's throw from the hubbub of the King's Road, Sloane Square and Knightsbridge.

Bedroom : Bathroom : Reception Room : Kitchen : Porter : Communal Garden : Lift

Chatterton Rees (Parsons Green)

173 New King's Rd, London SW6 4SW
Email: sales@chattertonrees.co.uk Tel: 020 3780 0580





CHATTERTON | REES

Terms and Conditions

Price

£1,350,000 Subject To Contract

Tenure

Leasehold, expires 29/09/3011, plus share of Freehold

Service Charge:

£3,500 per annum and £2,000 per annum towards sinking fund

Chatterton Rees (Parsons Green)

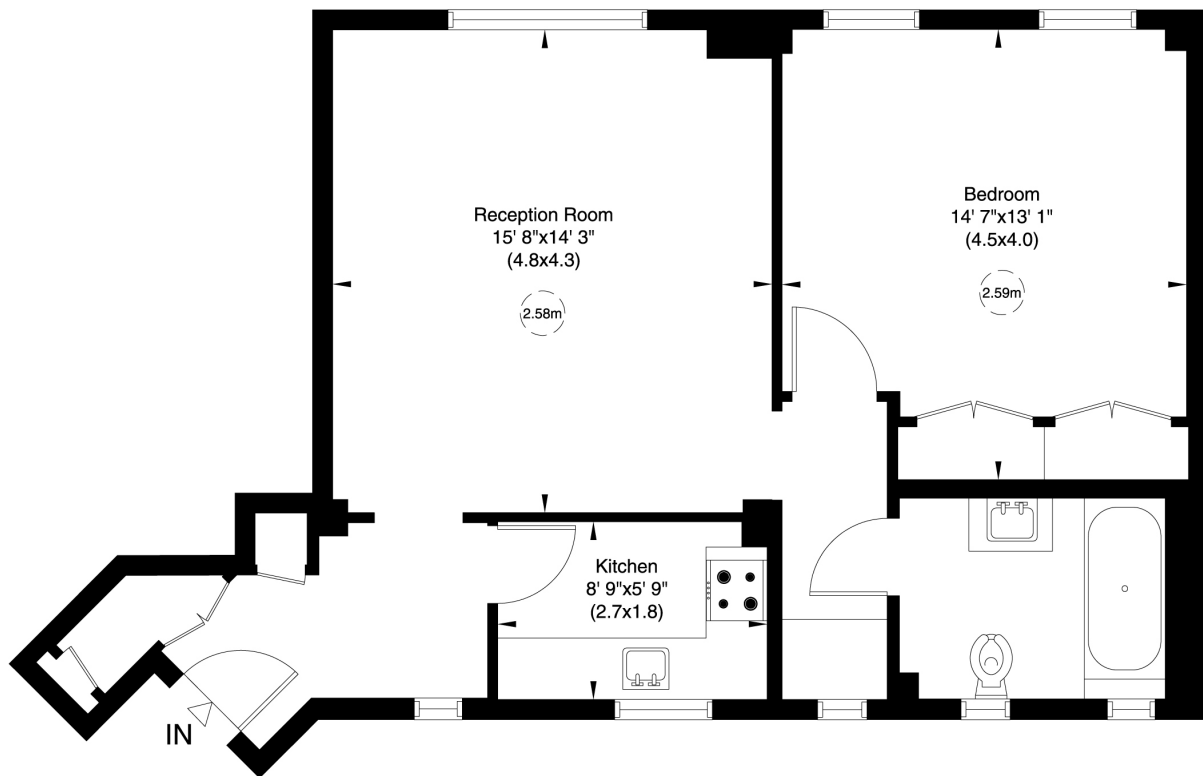
173 New King's Rd, London SW6 4SW
Email: sales@chattertonsrees.co.uk Tel: 020 3780 0580

Whitelands House, Cheltenham Terrace, SW3

Gross internal area (approx.)

59 Sq m (639 Sq ft)

For identification only, Not to Scale



Fourth Floor

Not to scale, for guidance only and must not be relied upon as a statement of fact. All measurements and areas are approximate only (and have been prepared in accordance with the current edition of the RICS Code of Measuring Practice).

Energy Efficiency Rating

	Current	Potential
<i>Very energy efficient - lower running costs</i>		
(92+) A		
(81-91) B		
(69-80) C	70	72
(55-68) D		
(39-54) E		
(21-38) F		
(1-20) G		
<i>Not energy efficient - higher running costs</i>		
England, Scotland & Wales	EU Directive 2002/91/EC	