



CHATTERTON | REES



**21 Royal Court House 162 Sloane Street, London, SW1X 9BS**  
**£4,500 Per week**

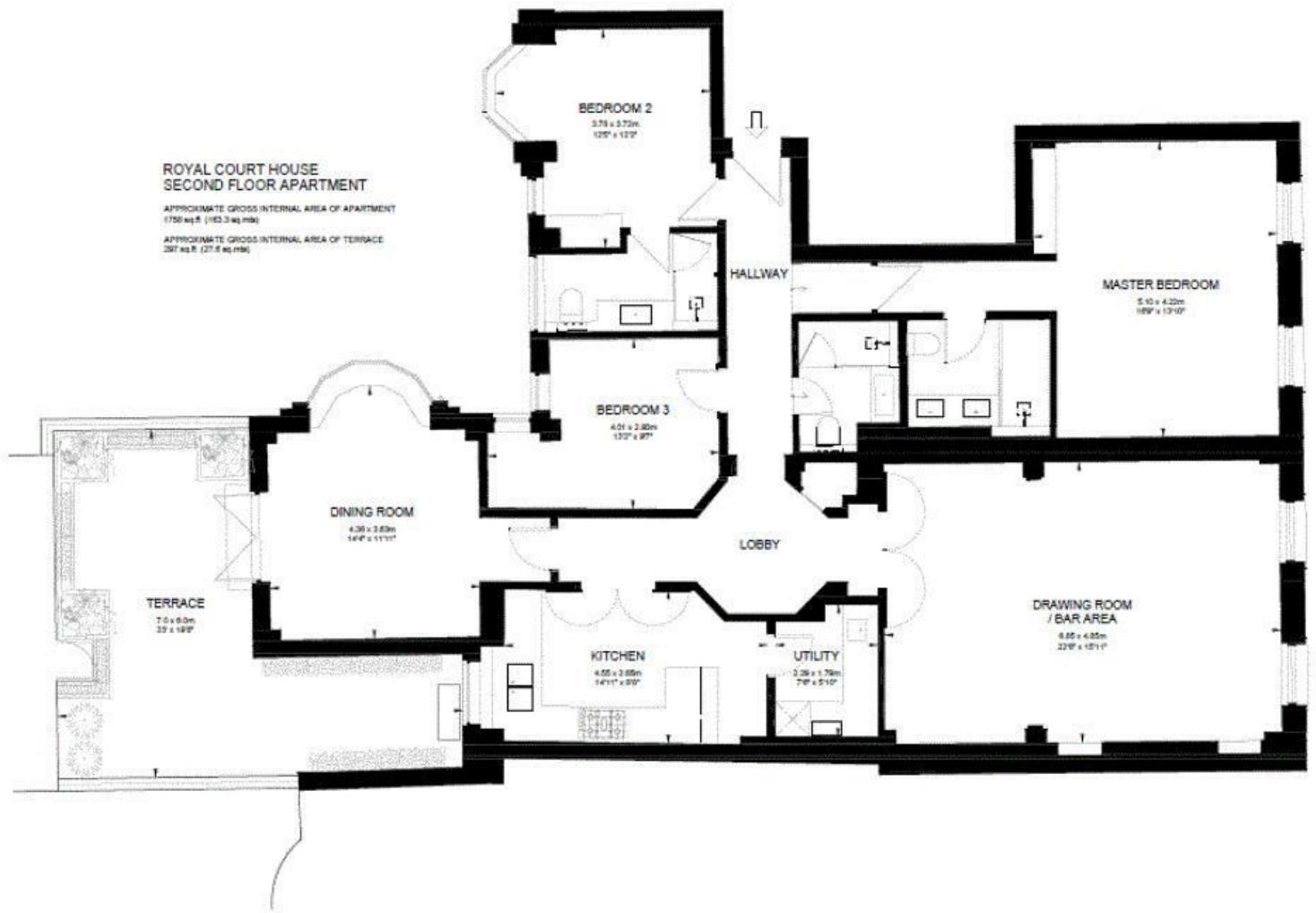
A stunning three bedroom apartment overlooking the whole of Cadogan Place gardens with access for a yearly fee. The property has been totally refurbished throughout with three double bedrooms and three bathrooms, two being en suite.

The master suite has built in storage and large windows with the beautiful garden views as well as the large reception room. To the rear of the property you can find the other two bedrooms, good size kitchen and utility room and a dining room that opens on to the private roof terrace.

Royal Court House has 24 hour concierge, two entrances and a lift whilst being perfectly located only moments from Sloane Square or Knightsbridge.



Floor Plan



Area Map



These particulars, whilst believed to be accurate are set out as a general outline only for guidance and do not constitute any part of an offer or contract. Intending purchasers should not rely on them as statements of representation of fact, but must satisfy themselves by inspection or otherwise as to their accuracy. No person in this firm's employment has the authority to make or give any representation or warranty in respect of the property.

Energy Efficiency Graph

