

# WAYNE & SILVER



Kingsley Way, London, N2 OEL  
£2,500 Per Week







£2,500 Per Week

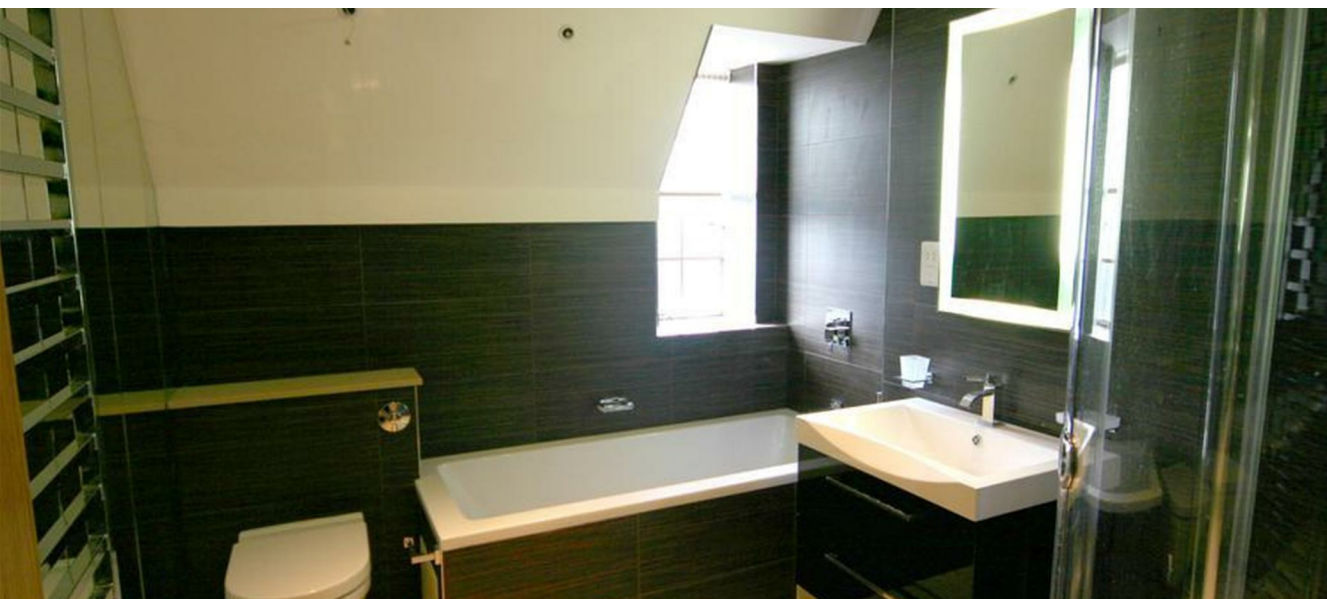
# Kingsley Way

London, N2 OEL

A detached family home located in this enviable cul-de-sac moments from the Hampstead Heath Extension. This fine home affords all luxuries and boasts oak wood floors and doors & air conditioning. Entrance hall, lounge, dining room, State of the art fully equipped kitchen/diner with double doors onto large patio and landscaped garden, tv/family room, guest cloakroom, the first floor comprises 4 double fitted bedrooms, 2 en suite bathrooms (1 en suite) both with separate shower cubicles, en suite shower room, the top (2nd) floor has raised ceilings giving extra space with two fitted double bedrooms, luxury shower room and bathroom with separate shower cubicle and LED lighting. There is a driveway for 3/4 cars. Large rear landscaped garden.





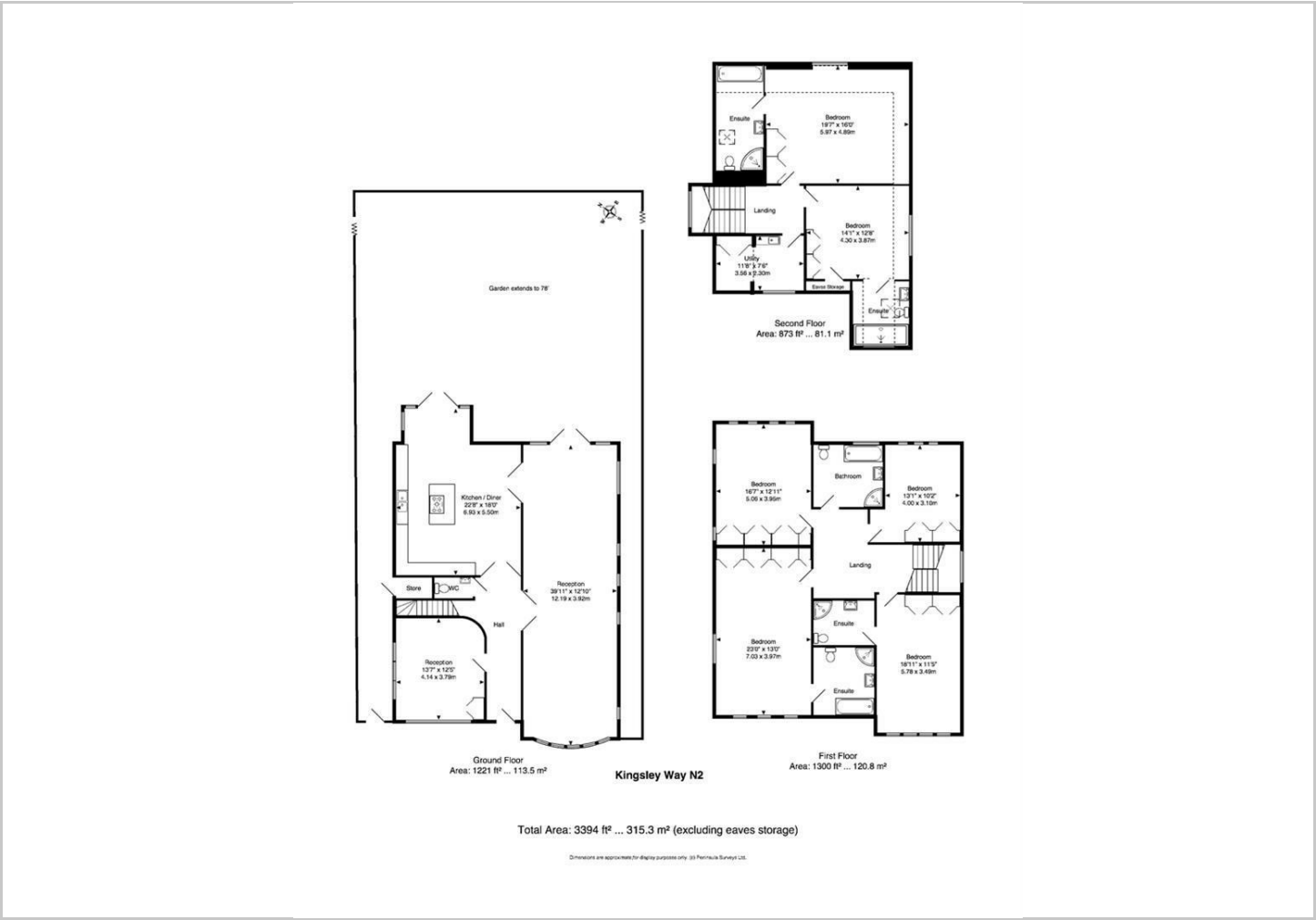








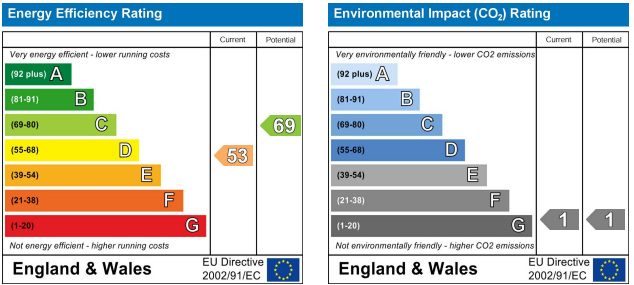
Floor Plans



Location Map



Energy Performance Graph



The particulars are set out as a general outline only for the guidance of intended purchasers or lessees, and do not constitute, any part of a contract. Nothing in these particulars shall be deemed to be a statement that the property is in good structural condition or otherwise nor that any of the services, appliances, equipment or facilities are in good working order. Purchasers should satisfy themselves of this prior to purchasing.