

# WAYNE & SILVER



Fellows Road, London, NW3 3JG

Price Guide £1,900,000







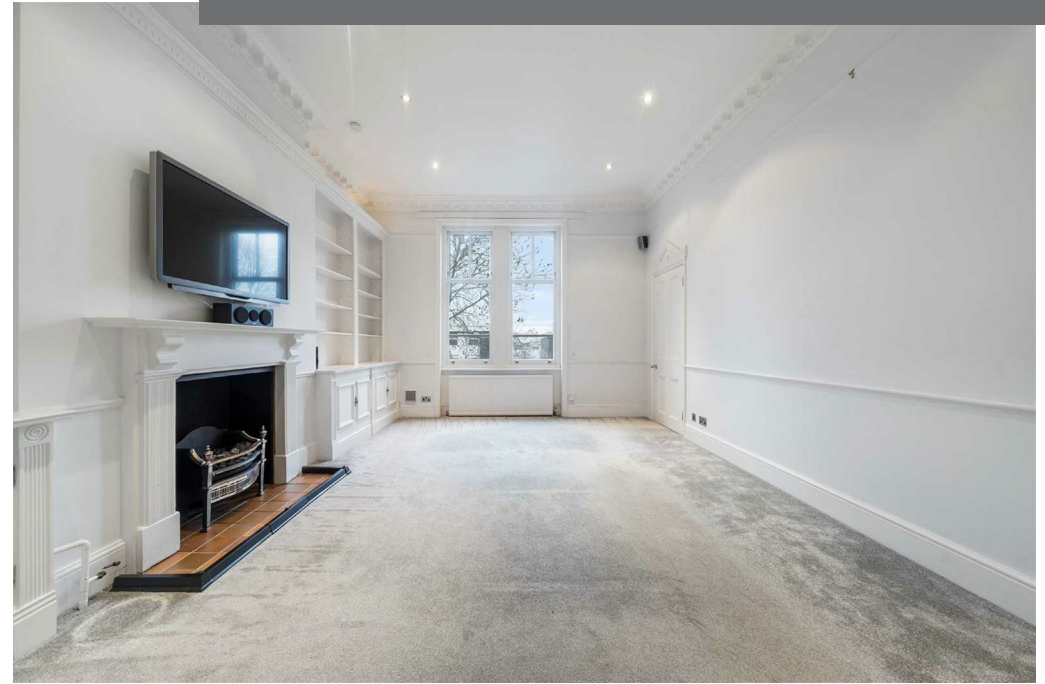


# Fellows Road

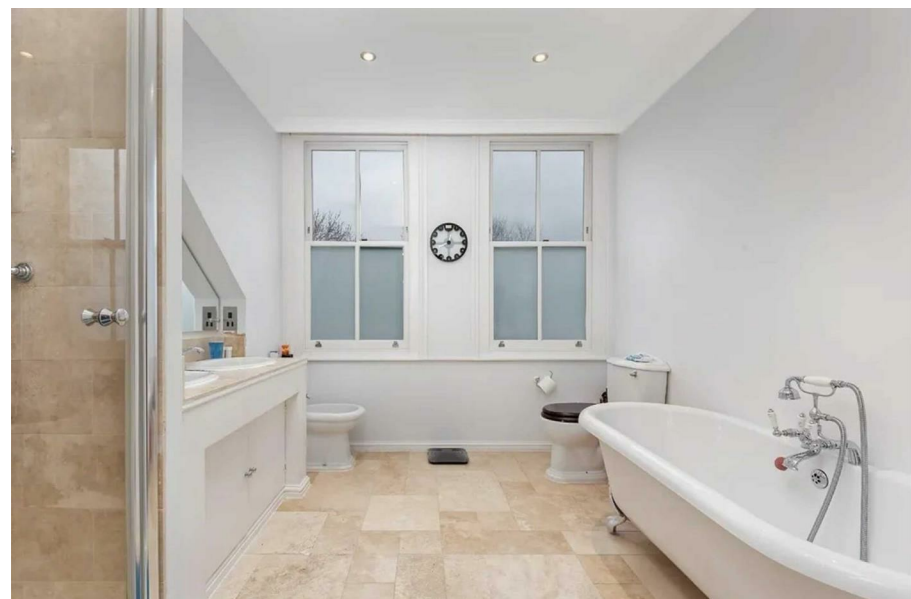
London, NW3 3JG

A rarely available top floor maisonette arranged over the first and second floors of an attractive period conversion. Offering 2085 sq. ft /194.07 sq. m of spacious accommodation, with its access on the raised ground floor level. This delightful period conversion offering an abundance of space and natural light comprises of a beautiful reception with feature fireplaces -dining room- Modern kitchen/diner - Study - Master bedroom with en suite bathroom and dressing room - 3 further double bedrooms - Family bathroom - Guest WC and utility room.

Fellows Road is ideally located just a short stroll from the open spaces of Primrose Hill Park and the popular shops and cafes of England's Lane.



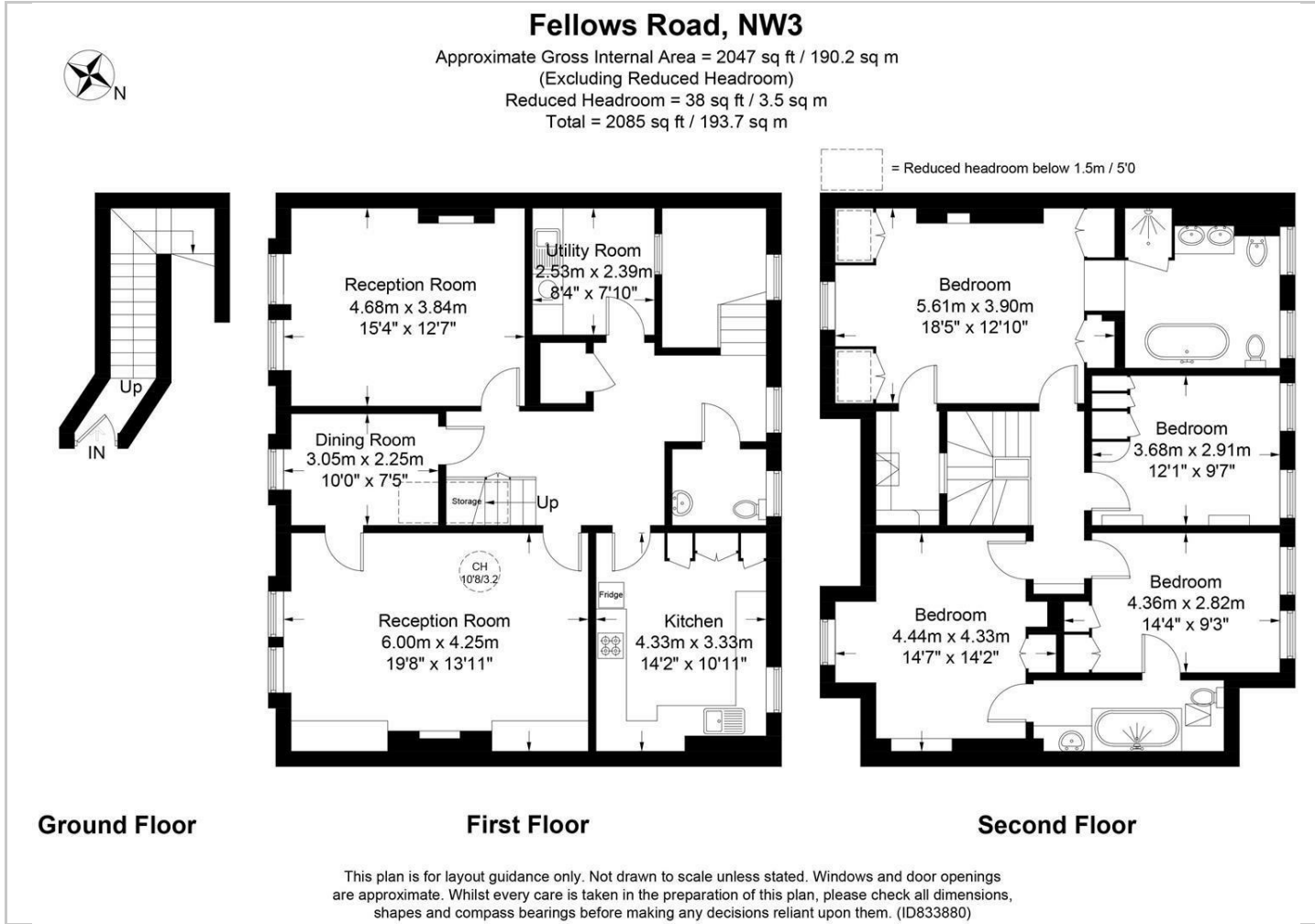




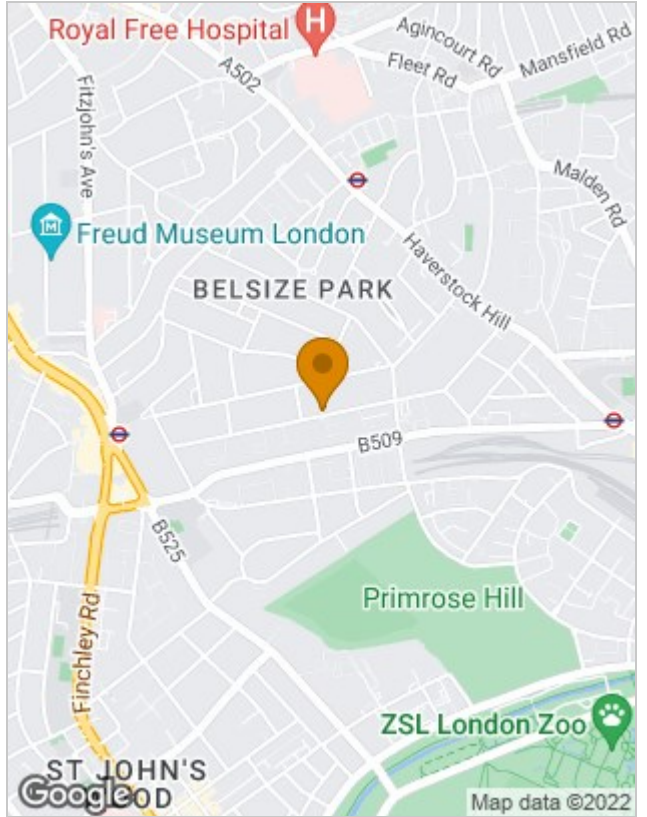




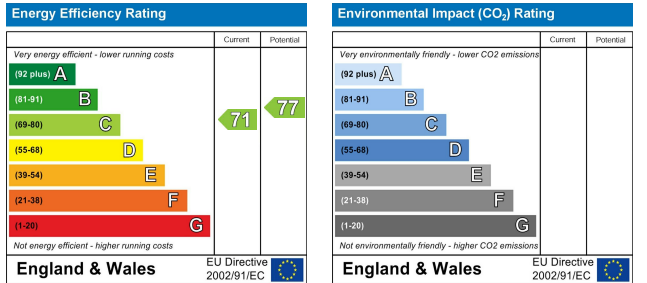
## Floor Plans



## Location Map



## Energy Performance Graph



The particulars are set out as a general outline only for the guidance of intended purchasers or lessees, and do not constitute, any part of a contract. Nothing in these particulars shall be deemed to be a statement that the property is in good structural condition or otherwise nor that any of the services, appliances, equipment or facilities are in good working order. Purchasers should satisfy themselves of this prior to purchasing.

41 Heath Street, Hampstead, London, NW3 6UA  
Tel: 020 7431 4488 Email: [info@wayne-silver.com](mailto:info@wayne-silver.com) [wayne-silver.com](http://wayne-silver.com)