



## RECENTLY REFURBISHED TWO BEDROOM HOUSE

Anglesey Road, South Oxhey, Watford

**ROBSONS**



## RECENTLY REFURBISHED TWO BEDROOM HOUSE

Anglesey Road, South Oxhey, Watford

**TWO BEDROOMS • TWO BATHROOMS •  
SPACIOUS LIVING SPACE • FITTED KITCHEN •  
REAR GARDEN • SECLUDED FRONT GARDEN  
• PLENTY OF LIGHT THROUGHOUT • EAVES  
STORAGE • STYLISH BATHROOM •**

### Description

Recently refurbished to a high standard, this impressive two bedroom two bathroom brick-built house offers stylish and contemporary living throughout.

The accommodation comprises, on the ground floor, an entrance hall, a spacious lounge / dining room, an open plan fitted kitchen with built-in appliances, and a well appointed shower room. The first floor provides two good sized bedrooms, a luxury bathroom, and plentiful eaves storage. The rear garden is landscaped with a patio and decking, and the front garden is completely enclosed providing seclusion and privacy. Benefits include gas central heating with combi boiler, and double glazed windows.







### Location

The property is conveniently situated within 'a stones throw' of a local shopping parade on Prestwick Road with bakers, grocery, and pharmacy; and approximately one mile from Carpenders Park Overground Station, providing regular services between Euston and Watford Junction, and 1.7 miles from Northwood Underground Station with regular services on Metropolitan Line to Central London. South Oxhey is close to Watford, Northwood, and Moor Park. It has excellent local amenities, from a large array of shops, to a local leisure centre and an Overground station for great local access to Watford and into central London. There are some good local school choices, and central Watford is close by with its excellent amenities including the Atria Shopping Centre, multiplex cinema, three theatres, and numerous restaurants, pubs, and clubs.

### Additional Information

Guide Price: £365,000

Tenure: Freehold

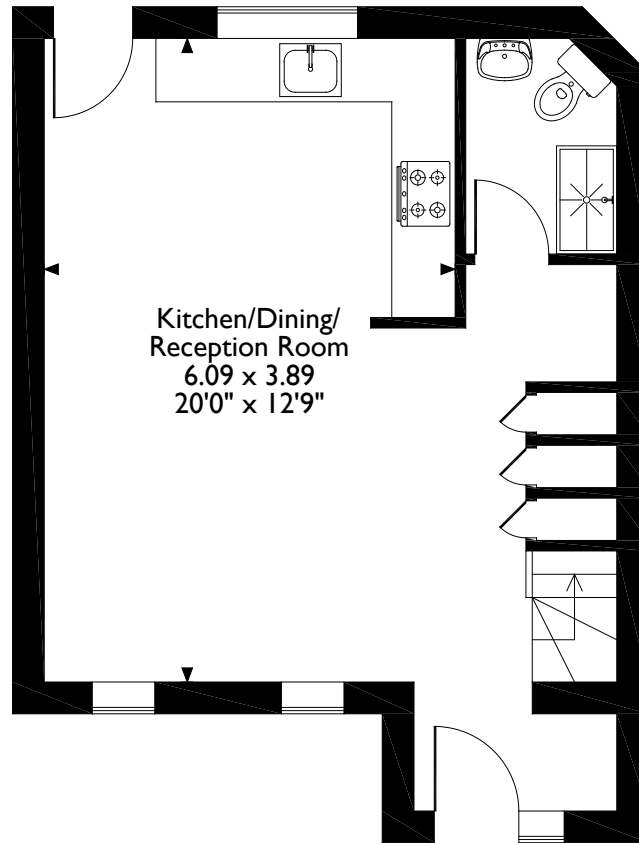
Local Authority: Hertfordshire County Council

Council Tax Band: B

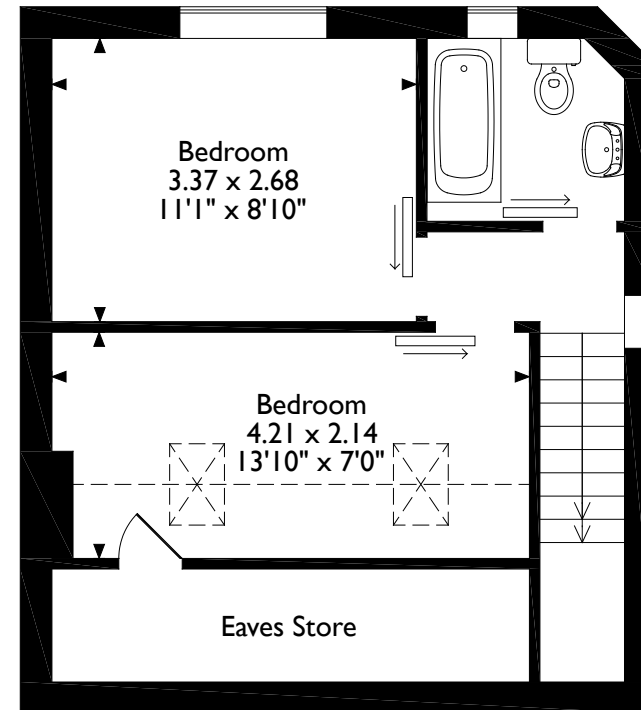
Energy Efficiency Rating: D



Anglesey Road, Watford, Hertfordshire  
Approximate Gross Internal Area  
63 Sq M/678 Sq Ft



**Ground Floor**



**First Floor**

Please note that the location of doors, windows and other items are approximate and this floorplan is to be used for illustrative purposes only. Unauthorized reproduction is prohibited.

**ROBSONS**

Address 7 Clive Parade, Northwood, Middlesex, HA6 2QF

Tel: 01923 835355 northwood@robsonswb.com

[www.robsonswb.com](http://www.robsonswb.com)

[www.the-londonoffice.co.uk](http://www.the-londonoffice.co.uk)  
40 ST JAMES'S PLACE SW1