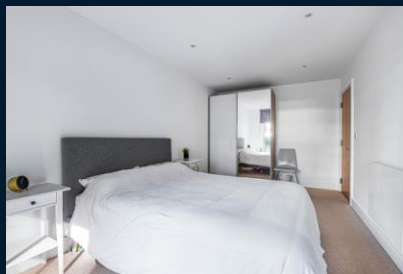
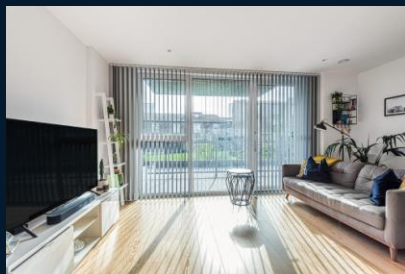




Hockett Close, Surrey Quays

Guide Price £485,000 Leasehold

OLIVER *OJ* JAQUES
EST. 1986



Hockett Close, Surrey Quays

A naturally bright two bedroomed maisonette with spacious front and back terraces, which forms part of Galliard's landmark development Aurora Point. Designed and constructed within the last 5 years, the property enjoys a fully transferable new homes guarantee along with a concierge service and landscaped communal gardens. The property is immaculately presented throughout with floor to ceiling windows throughout exacerbating the feeling of space and light. The open plan living areas are laid to hard wood flooring while the two double bedrooms are carpeted and face away from the afternoon sun. Located moments from the Thames and a short, dockside stroll to the Overground and Jubilee lines, this beautiful home makes a convenient home from which to commute and a great place to enjoy the sunny months.

- Two Double Bedrooms
- Open Plan Living Areas
- Front and Back Terraces
- Residents' Concierge Service
- Communal Gardens
- Transferable Building Warranty

South East London
020 7231 5050

Email southeast@o-j.co.uk

229-231 Lower Road, London, SE16 2LW

web www.o-j.co.uk

Every care has been taken with the preparation of this brochure but it is for general guidance only and complete accuracy cannot be guaranteed. If there is any point, which is of importance professional verification should be sought. This brochure does not constitute a contract or part of a contract. We are not qualified to verify tenure of property. Prospective purchasers should seek clarification from their solicitor or verify the tenure of this property for themselves by visiting www.gov.uk/government/organisations/land-registry. The mention of any appliances, fixtures or fittings does not imply they are in full working order. Photographs are reproduced for general information and it cannot be inferred that any item shown is included in the sale. All dimensions are approximate. Walking times are taken from Google Maps and measured from the centre of the postcode, which may differ from the individual property. We always refer prospective buyers to our panelled conveyancers and Chancery Mortgage Services Ltd. It is your decision whether to use them. Should you decide to do so you should know that we could receive a referral fee from them for recommending them to you.

