



Waddington Way SE19
£800,000

0208 702 9333
pedderproperty.com

pedder



In general

- Detached family house
- Four bedrooms plus study
- Modern kitchen with integrated appliances
- Off street parking and a garage
- Large through lounge / diner
- Separate garden room
- Tastefully decorated throughout

In detail

A beautifully presented and much upgraded four bedroom detached house positioned on a popular residential road nearby Downsvie Primary School.

This tastefully finished property has been extended beyond the original build to offer well proportioned accommodation which could present an ideal long-term opportunity for a young or growing family.

Notable points include a white high gloss handle-less kitchen with integrated appliances and granite surfaces, a 29 ft 9 through reception room, a garden room with double doors to a patio seating area, a downstairs study (ideal for home working), four first floor bedrooms with plenty of fitted storage, plantation shutters, and a fully tiled modernised bathroom.

Externally there is a well manicured rear garden with mature planting and a pergola, off street parking for two cars and a detached garage.

This location is well placed for both Downsvie Primary School and Harris Academy, as well as green open spaces, and access to Norbury rails link for London Bridge and Victoria.

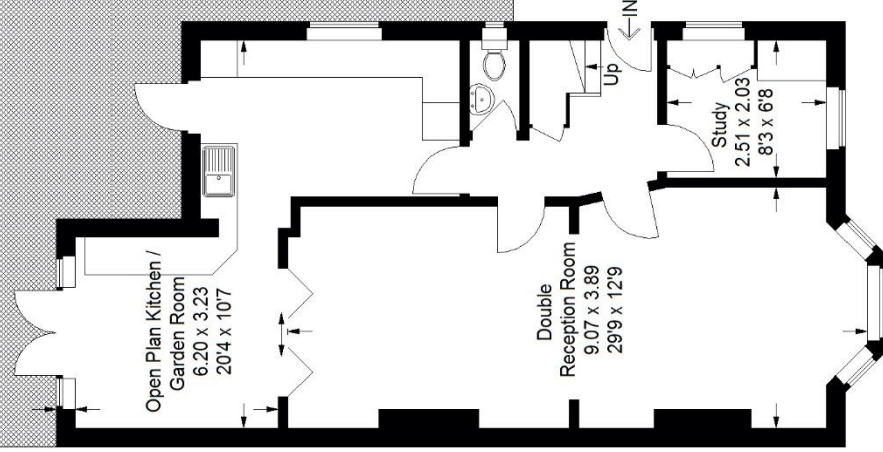
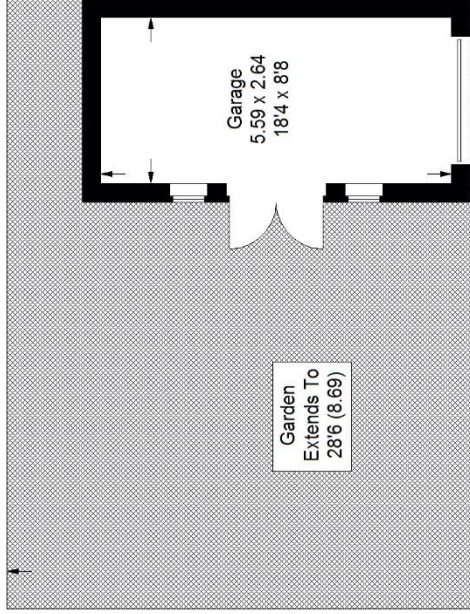
This immaculate property should be viewed to be appreciated.



Floorplan

Waddington Way, SE19

Approximate Gross Internal Area
Ground Floor = 70.0 sq m / 753 sq ft
First Floor (Excluding Void)
57.8 sq m / 622 sq ft
Garage = 15.4 sq m / 166 sq ft
Total = 143.2 sq m / 1541 sq ft



Ground Floor



First Floor

Copyright www.pedderproperty.com © 2021

These plans are for representation purposes only as defined by RICS - Code of Measuring Practice. Not drawn to Scale. Windows and door openings are approximate. Please check all dimensions, shapes and compass bearings before making any decisions reliant upon them.