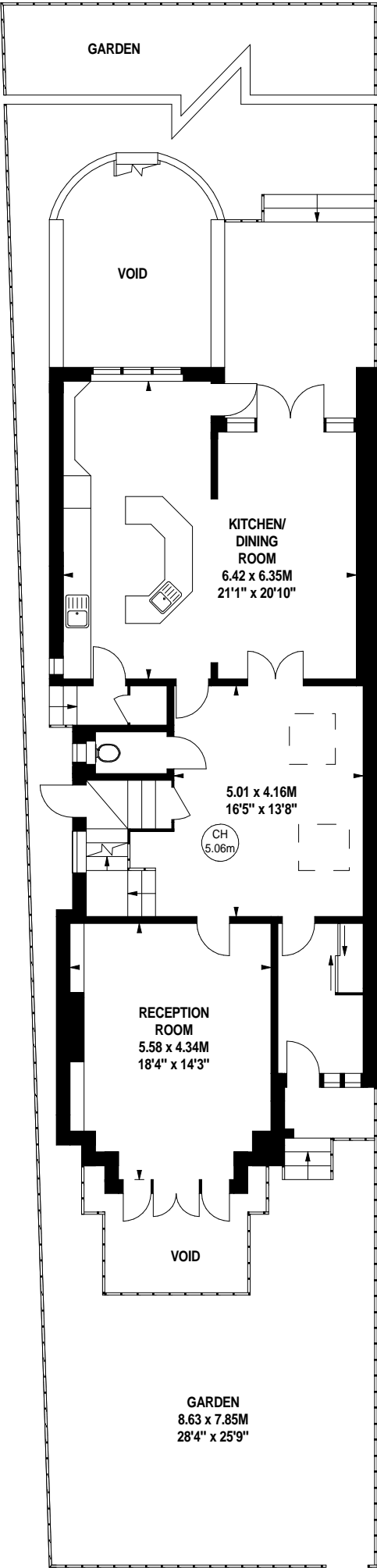


Key :
CH - Ceiling Height



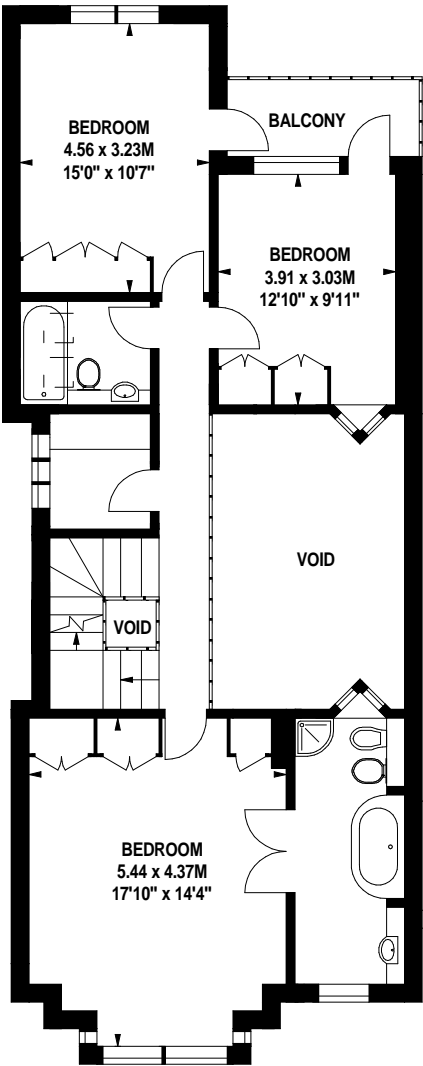
Ground Floor

Grove Park Gardens, W4

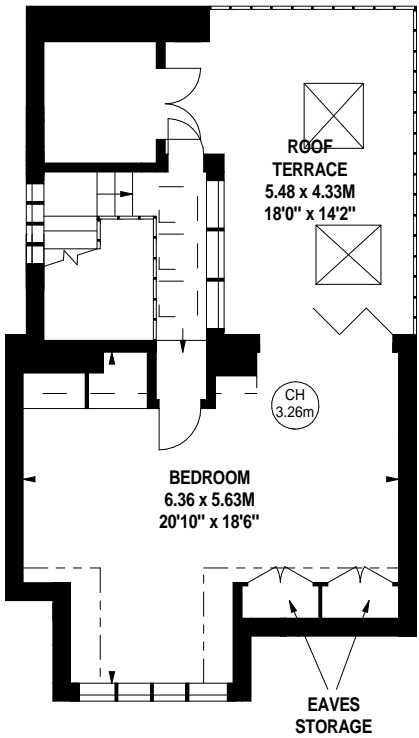
Approximate gross internal area

213.67 sq m / 2300 sq ft
(Including Eaves Storage)

Eaves Storage
1.49 sq m / 16 sq ft
Storage
4.55 sq m / 49 sq ft



First Floor



Second Floor

The floor plan is not to scale and measurements and areas shown are approximate and therefore should be used for illustrative purposes only. The plan has been prepared in accordance with the RICS code of Measuring Practice and whilst we have confidence in the information produced, it must not be relied on. If there is any aspect of particular importance, you should carry out or commission your own inspection of the property.
Copyright of FeaturePRO.