

Sullivan Court, Peterborough Road, SW6

Fulham, London



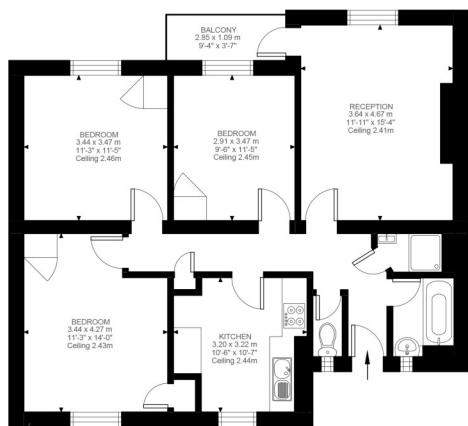


Sullivan Court, Peterborough Road London, SW6

£550,000
Leasehold



A recently refurbished three double bedroom, two bathroom flat with a balcony and within walking distance to the excellent shops, pubs, restaurants and the underground (District Line) at Parsons Green. The flat is very light and airy and the good size reception has access on the balcony. There is a bathroom and shower room, as well as a guest w/c. Furthermore, wood floors are laid throughout the living spaces and bedrooms and all the windows are double glazed. With no onward chain and a motivated seller, early viewing is essential.



Fourth Floor
898 ft²

Peterborough Road, SW6
Approximate Gross Internal Area
83.42 SQ.M / 898 SQ.FT

- *RECENTLY REFURBISHED
- *THREE DOUBLE BEDROOMS
- *RECEPTION ROOM
- *KITCHEN
- *BATHROOM
- *SHOWER ROOM
- *GUEST W/C
- *NO ONWARD CHAIN
- *WALKING DISTANCE TO THE AMENITIES & UNDERGROUND AT PARSONS GREEN (DISTRICT LINE)
- *LEASEHOLD

All viewings by appointment through our
Fulham Office:

T: 020 7731 3636

E: fulham@lawsonrutter.com

347 Fulham Palace Road, London
SW6 6TB

In accordance with the Property Misdescription Act 1991, we wish to emphasise that the information given in these particulars is intended to help you decide whether you wish to view this property. Whilst every care is taken to ensure the accuracy of these particulars please note that all measurements are approximate and we are, for the accuracy of other information, reliant on what the seller has provided. We strongly recommend that you rely on your own inspections and those of your advisors to establish the details of any aspects which are of particular importance. Please note that we have not undertaken any survey of the property or the appliances within it and the buyer must rely on their own

