

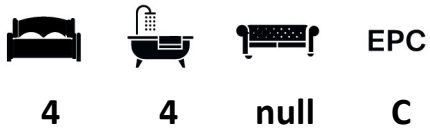


Arkwright Road, London NW3 6AA

WAYNE
& SILVER

Arkwright Road, London NW3 6AA

A newly refurbished 4 bedroom, 4 bathroom garden apartment (1683 sqft) situated in this brand new development in the heart of Hampstead. The property is air-conditioned and offers a modern luxurious living space whilst keeping the historic value of the original building. This outstanding home comprises of a large reception/dining area which leads to a large private garden, modern kitchen with utility room and large conservatory, four bedrooms all with en-suite bathrooms and fitted wardrobes. The property is located within a few minutes' walk of Hampstead Underground Station (Northern line). Finchley Road Overground and Underground Stations (Metropolitan, Jubilee lines and Overground) and Swiss Cottage Underground Station (Jubilee line) are also within a short walk.



Guide price: £2,595 Per Week

Tenure:

Service Charge: Add text here

Local Authority: Camden

Council Tax Band: H



Features include:

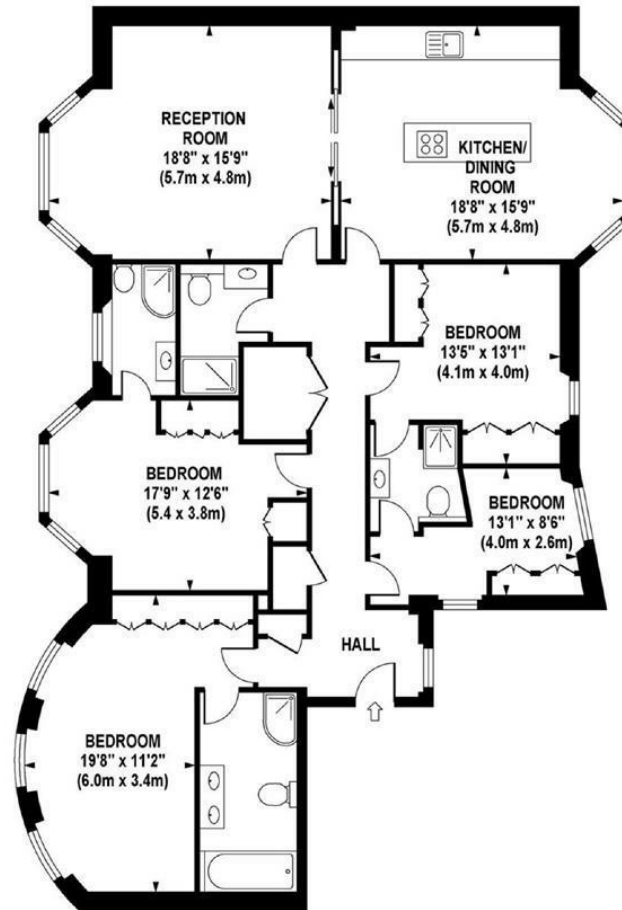






ARKWRIGHT ROAD

Approximate Gross Internal Area 1677 sq ft / 155.8 sq m



FIRST FLOOR
GROSS INTERNAL
FLOOR AREA 1677 SQ FT

Although every attempt has been made to ensure accuracy, all measurements are approximate.
The floor plan's for illustrative purposes only and not to scale. Measured in accordance to RICS standards.

DE-PHOTOGRAPHY.NET

41 Heath Street
Hampstead
London
NW3 6UA

We would be delighted to tell you more
020 7431 4488
info@wayne-silver.com

wayne-silver.com