



AN IMMACULATELY PRESENTED APARTMENT WITH PRIVATE GARDEN

Moor Park Gardens, Pembroke Road, Moor Park, Middlesex HA6 2LF

ROBSONS

AN IMMACULATELY PRESENTED APARTMENT WITH PRIVATE GARDEN

Moor Park Gardens, Pembroke Road, Moor Park,
Middlesex HA6 2LF

**TWO RECEPTION ROOMS • KITCHEN/
BREAKFAST ROOM • UTILITY ROOM •
CLOAKROOM • THREE BEDROOMS ONE WITH
ENSUITE SHOWER ROOM • BATHROOM •
PRIVATE AREA OF GARDEN • GARAGE •**

Description

Forming Part of the 294 acre Moor Park Private Estate, bordering Middlesex and Hertfordshire, surrounded by rolling countryside and two championship golf courses, an opportunity exists to acquire a beautifully presented and rarely available 3 bedroom 2 bathroom penthouse apartment.

Moor Park Gardens is an original mansion block sitting proudly at the junction of Pembroke Road and Main Avenue with wide ranging views to the rear over looking Rickmansworth Golf course. Set in nearly 0.9 acre of landscaped gardens. The apartment is bright and spacious with its own private garden and a garage.





Location

Conveniently located within walking distance from Moor Park shops, restaurants and the Metropolitan Line station, with convenient commuter train services leading to Baker Street and The City. Northwood and Rickmansworth shopping centres are also within reach and offer a further wide range of boutique shops and restaurants and the Metropolitan Line stations. The area is also well served for Leisure facilities.

Additional Information

Tenure: Share of Freehold

Lease Length: 176 years from 29.9.58

Service Charge: TBC

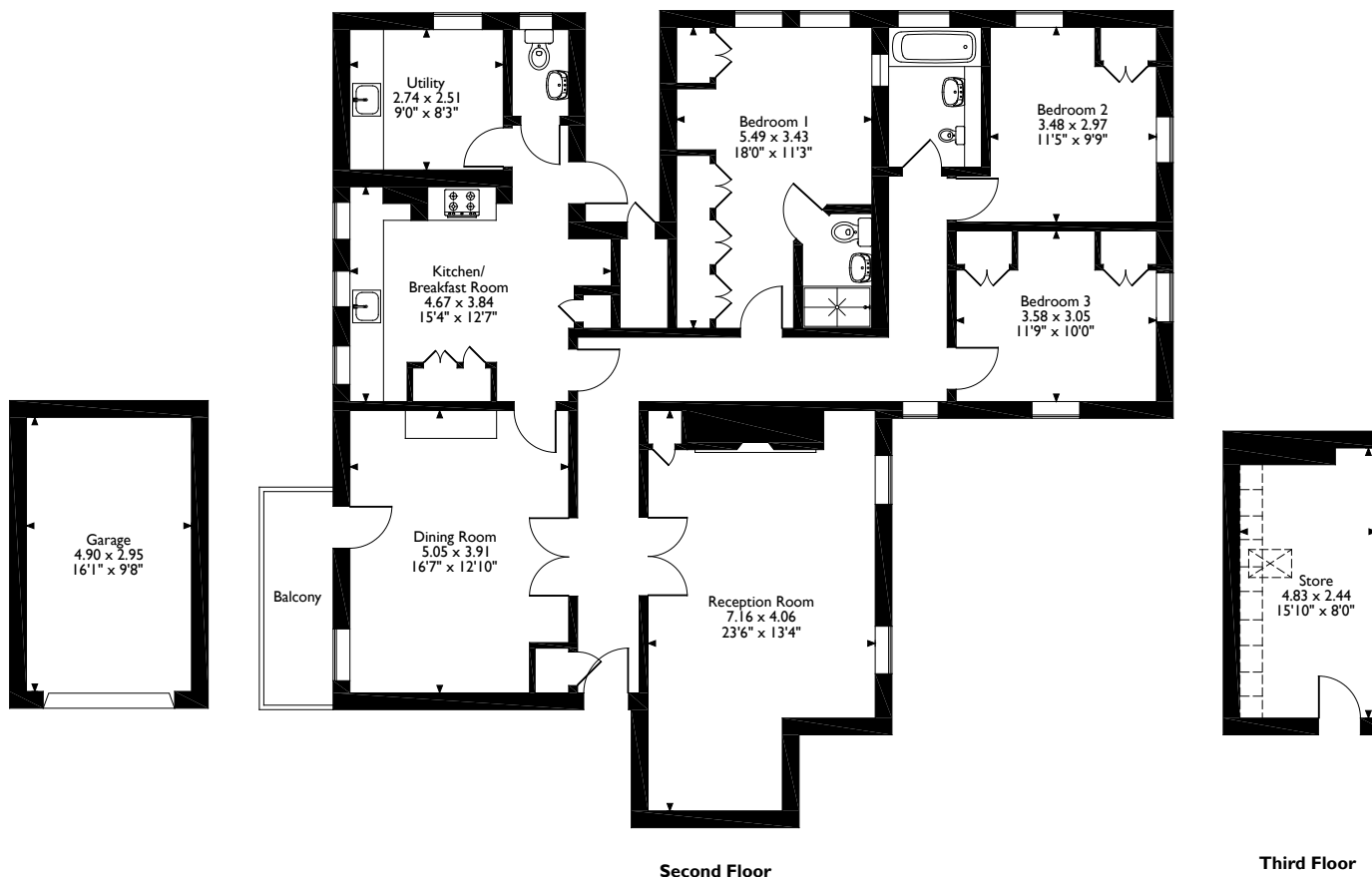
Local Authority: Three Rivers District Council

Council Tax: Band: G

Energy Efficiency Rating: Band D



Moor Park Gardens Pembroke Road
 Approximate Gross Internal Area
 Main House = 151 Sq M/1628 Sq Ft
 Garage = 14 Sq M/151 Sq Ft
 Total = 165 Sq M/1779 Sq Ft



Please note that the location of doors, windows and other items are approximate and this floorplan is to be used for illustrative purposes only. Unauthorized reproduction is prohibited.

ROBSONS

The Estate Office, North Approach, Moor Park, Middlesex HA6 2JQ
 Tel: 01923 820622 moorpark@robsonswb.com

www.robsonswb.com

www.the-londonoffice.co.uk
 40 ST JAMES'S PLACE SW1

Important notice: Robsons, their clients and any joint agents give notice that 1: They are not authorised to make or give any representations or warranties in relation to the property either here or elsewhere, either on their own behalf or on behalf of their client or otherwise. They assume no responsibility for any statement that may be made in these particulars. These particulars do not form part of any offer or contract and must not be relied upon as statements or representations of fact. 2: Any areas, measurements or distances are approximate. Plot sizes and dimensions are taken from Promap and are approximate. The text, photographs and plans are for guidance only and are not necessarily comprehensive. It should not be assumed that the property has all necessary planning, building regulation or other consents and Robsons have not tested any services, equipment or facilities. Purchasers must satisfy themselves by inspection or otherwise.