



Melton Court, Onslow Crescent, South Kensington SW7

Situated in one of South Kensington's most sought after buildings, this charming 3 bedroom, 3 bathroom apartment is offered to the market with vacant possession. Ideally located only a minute from South Kensington Station, local shops and some of London's finest restaurants, we have no hesitation in recommending your earliest viewing. The benefits of the apartment include, a spacious reception room, open plan to dining area, with stunning views, a kitchen/breakfast room, 3 bedrooms, one ensuite bathroom and two en-suite shower rooms. The property is on the 6th floor and enjoys 24 hour portorage. South Kensington Tube station is opposite and Knightsbridge is a mere 10 minute walk away.



EPC rating: D.

Sitting Room * Dining room * Fully Fitted Kitchen * Master Bedroom with en-suite Bathroom * Second Bedroom with en-suite Shower * Third Bedroom * Ample Storage * Guest Cloakroom * Lift * Communal Hot Water & Heating * 24 Hr Porter *

PRICE: £2,100,000 stc.

LEASE: 983 years

Service Charges: £10,000 pa approx

MALVERNNS

Estate Agents

Malvern Court, Onslow Square, SW7 3HU

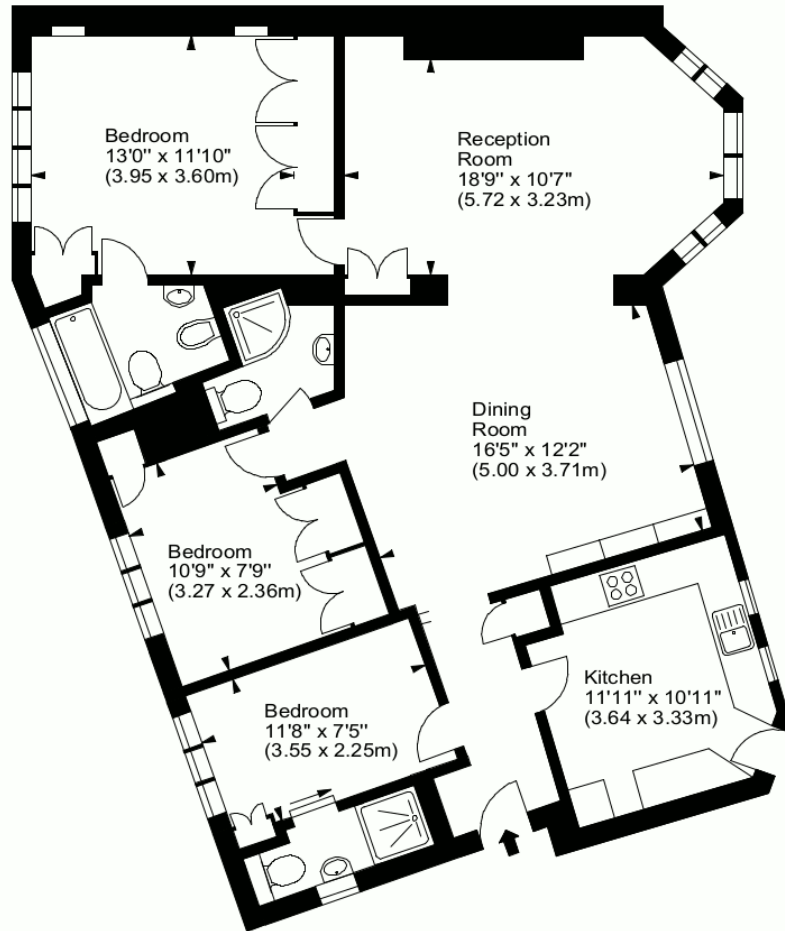
alexander@malverns.co.uk

020 7589 8122

Melton Court, SW7



Approx. Gross Internal Area
1202 Sq Ft - 111.67 Sq M



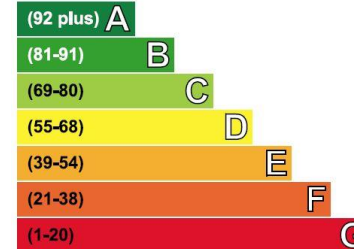
Sixth Floor

For illustration purposes only. Not to scale.
All measurements are taken and shown at floor level.
www.r3photography.co.uk © Photography / Floor Plans / Lease Plans / EPCs



Energy Efficiency Rating

Very energy efficient - lower running costs



Not energy efficient - higher running costs

Current	Potential
63	77

Viewing: Strictly by appointment with Malverns. Important notice Malverns and their clients give notice that: 1: They are not authorised to make or give any representations or warranties in relation to the property either here or elsewhere, either on their own behalf or on behalf of their client or otherwise. They assume no responsibility for any statement that may be made in these particulars. These particulars do not form part of any offer or contract and must not be relied upon as statements or representations of fact. 2: Any areas, measurements or distances are approximate. The text, photographs and plans are for guidance only and are not necessarily comprehensive. It should not be assumed that the property has all necessary planning, building regulation or other consents and Malverns have not tested any services, equipment or facilities. Purchasers must satisfy themselves by inspection or otherwise. 16/03/2021



www.malverns.co.uk