

Location:

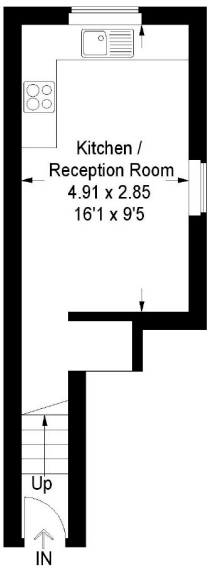
The property is within walking distance of Acton Central overground station and offers great local amenities based on Churchfield Road.

Key points:

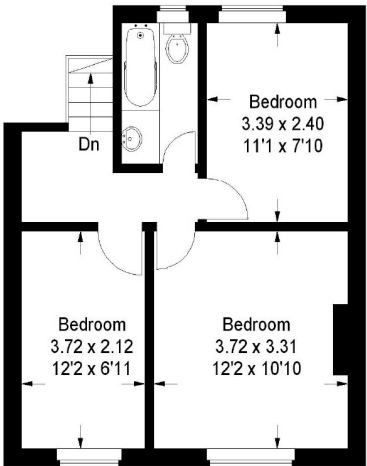
- Poet's Corner location
- Close to Acton Central
- Modern interior
- Great for a first time buyer

First floor flat, Myrtle Road, Acton

Approximate Gross Internal Area
57 sq m / 614 sq ft



Ground Floor



First Floor

Illustration for identification purposes only, measurements are approximate, not to scale.
FloorplansUsketch.com © 2014 (ID135243)

Do
Better:

Acton:

E acton@astonrowe.co.uk
103-105 Churchfield Road,
London W3 6AH
T 020 8992 3600

Brook Green & Hammersmith:

E brookgreen@astonrowe.co.uk
82 Shepherds Bush Road,
London W6 7PH
T 020 7871 6997

Aston
Rowe



Guide price £535,000

Myrtle Road,
London W3 6EA






A lovely three
bedroom flat in the
desirable Poet's

- 1 Reception rooms
- 3 Bedrooms
- 1 Bathrooms



This excellently presented three bedroom apartment situated in the heart of Acton's popular Poets Corner. It offers wonderful living spaces and great access into central London. Ideal for a family or working professionals, this first floor flat benefits from a cosy open plan kitchen reception room, three well proportioned bedrooms and a well finished bathroom. The property is located within minutes walk from Acton Central overground station and close proximity to local shops and amenities based on Churchfield Road.

The current owner says:
This flat is in a really great location for the local shops and transport links

-  First floor and loft flat
-  Three bedrooms
-  Open plan
-  Poet's Corner
- 

What's better:
This property is perfectly suited for a young couple looking to purchase for the first time.

