

Lordship Lane, SE22
OIEO £500,000

0208 702 8222
pedderproperty.com

pedder



In general

- Two double bedrooms
- Two bathrooms
- Stunning private roof terrace
- Allocated off-street parking
- Lift access
- Excellent condition
- CHAIN FREE

In detail

CHAIN FREE

Stunning two double bedroom, two-bathroom, penthouse apartment with a gorgeous 29-ft private roof terrace.

Boasting over 700 Sq Ft of internal space which has been lovingly modernised and maintained by the current owner. There is a modern kitchen separate to the 16 x 13-ft reception room and two double bedrooms including an en-suite to the master.

There are enviable green views across the sports grounds of Dulwich Common and towards Dulwich Park and Dulwich & Sydenham Golf Club from one of the largest private roof terraces in South East London – measuring over 750 Sq Ft.

Gloucester Court is set back from Lordship Lane in this private development and offers excellent access to The City and West End from Forest Hill station (0.8 miles) and West Dulwich station (1.1 miles).

There are independent shops, bars and restaurants further down Lordship Lane and into Dulwich Village as well as a host of parks and green spaces nearby including Dulwich Park and Horniman Museum and Gardens.

EPC: C | Council Tax Band: C | Lease: 104 years remaining | SC: £2,314 pa | GR: £ 225 pa | Buildings Insurance: included in Service Charge

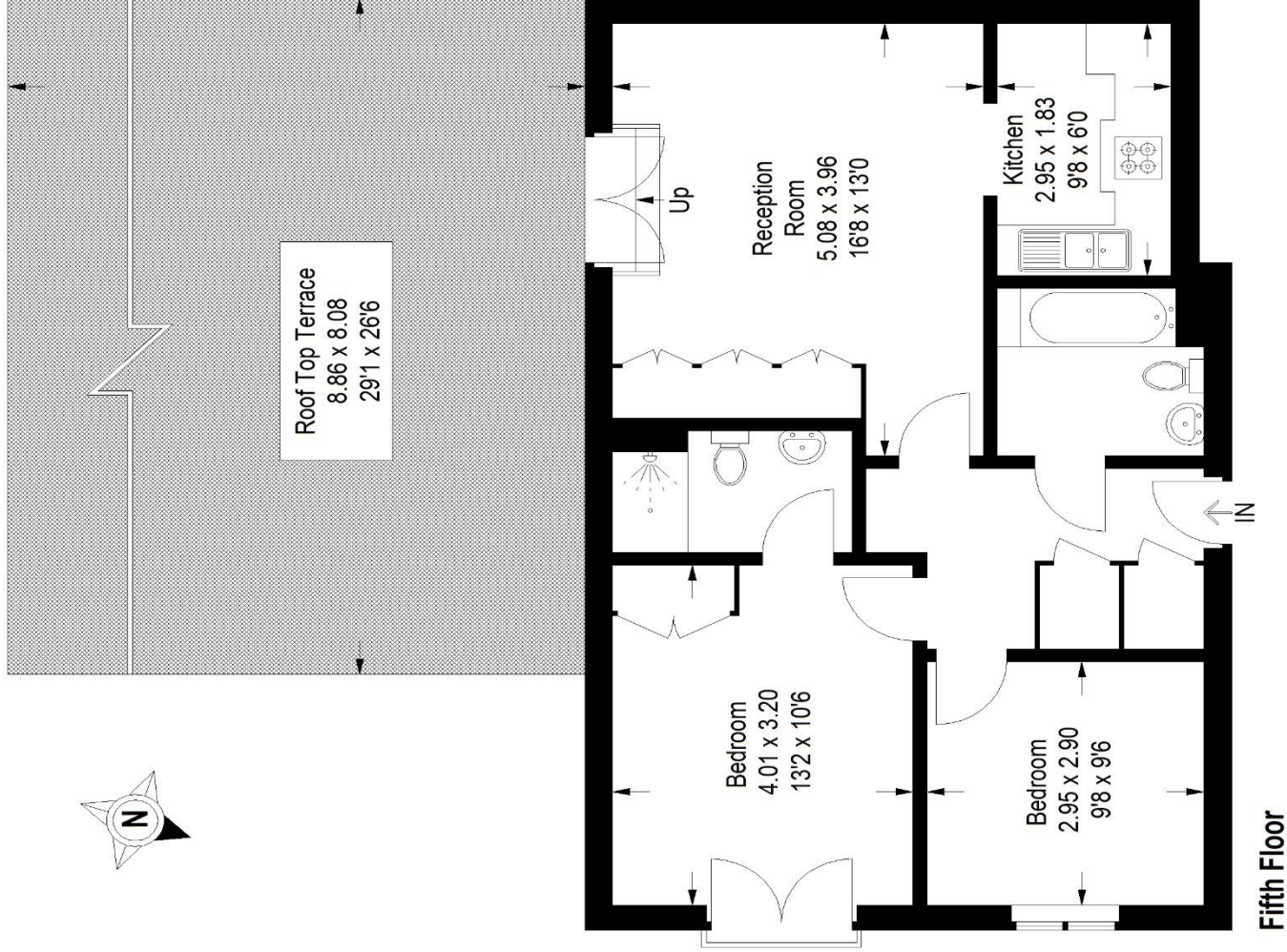


Score	Energy rating	Current	Potential
92+	A		
81-91	B		
69-80	C		
55-68	D	65 D	76 C
39-54	E		
21-38	F		
1-20	G		

Floorplan

Gloucester Court, SE22

Approximate Gross Internal Area
65.9 sq m / 709 sq ft



Pedder Property Ltd trading as Pedder for themselves and for the vendor/landlord of this property whose agents they are, give notice that (1) these particulars do not constitute any part of an offer or contract, (2) all statements contained within these particulars are made without responsibility on the part of Pedder or the vendor/landlord, (3) whilst made in good faith, none of the statements contained within these particulars are to be relied upon as a statement of representation or fact, (4) any intending purchaser/tenant must satisfy him/herself by inspection or otherwise as to the correctness of each of the statements contained within these particulars, (5) the vendor/landlord does not make or give either Pedder or any person in their employment any authority to make or give representation or warranty whatsoever in relation to this property.

Copyright www.pedderproperty.com © 2022
These plans are for representation purposes only as defined by RICS - Code of Measuring Practice.
Not drawn to Scale. Windows and door openings are approximate. Please check all dimensions, shapes and compass bearings before making any decisions reliant upon them.