



Stembridge Road SE20
OIEO £375,000

0208 702 9333
pedderproperty.com

pedder



In general

- Newly landscaped, beautiful 78ft rear garden
- New 4m x 3m summer house/office (with power and lighting)
- Share of freehold
- Popular location
- Victorian conversion
- Nearby transport links

In detail

An immaculately presented one bedroom ground floor garden flat positioned on a popular leafy road in Anerley.

This high specification property forms part of an attractive brick-fronted Victorian building and offers immediately enjoyable accommodation.

Highlights include solid wood flooring, shuttered windows throughout, a generous kitchen with lots of work and storage space, a double bedroom with a fitted wardrobe, a recently upgraded shower room and a share of the freehold.

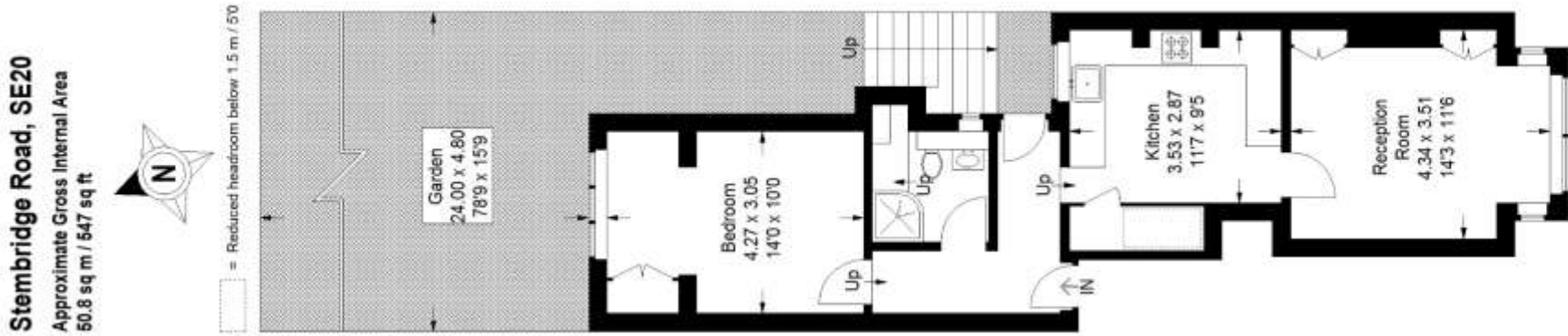
Externally there is a beautifully landscaped 78'9 ft private rear garden with a decked seating area and a summer house / office with power & lighting.

Stembridge Road is well placed for Birkbeck, Anerley and Norwood Junction rail links, also various amenities and parkland.

EPC: TBC | Council Tax: C | Lease: 62 years remaining | SC: As & When | GR: N/A



Floorplan



Pedder Property Ltd trading as Pedder for themselves and for the vendor/landlord of this property whose agents they are, give notice that (1) these particulars do not constitute any part of an offer or contract, (2) all statements contained within these particulars are made without responsibility on the part of Pedder or the vendor/landlord, (3) whilst made in good faith, none of the statements contained within these particulars are to be relied upon as a statement of representation or fact, (4) any intending purchaser/tenant must satisfy him/herself by inspection or otherwise as to the correctness of each of the statements contained within these particulars, (5) the vendor/landlord does not make or give either Pedder or any person in their employment any authority to make or give representation or warranty whatsoever in relation to this property.