

Location:

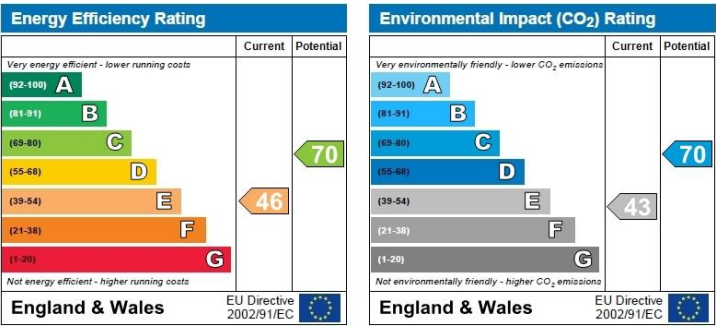
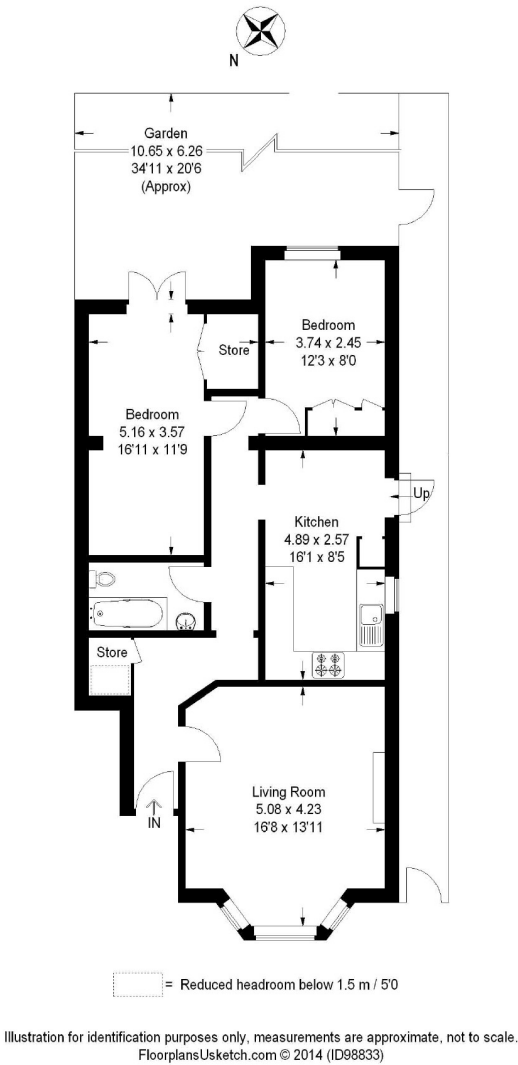
Goldsmith Avenue is located close to the amenities of Acton and Shepherd's Bush. Both Acton Central and Acton Main Line stations are close by for links to and from central London.

Key points:

- Poets Corner Location
- Stunning Garden Flat
- Two Double Bedrooms
- Large Kitchen Diner
- Excellent Condition
- Period Features

Ground Floor, Goldsmith Avenue,
London, W3

Approximate Gross Internal Area = 76 sq m / 818 sq ft



Do
Better:

Acton:

E acton@astonrowe.co.uk
103-105 Churchfield Road,
London W3 6AH
T 020 8992 3600

Brook Green & Hammersmith:

E brookgreen@astonrowe.co.uk
82 Shepherds Bush Road,
London W6 7PH
T 020 7871 6997

Aston
Rowe



Asking price £600,000

Goldsmith Avenue,
Acton W3 6HN

A beautiful 2 bedroom
garden apartment in
W3.

- 1 Reception rooms
- 2 Bedrooms
- 1 Bathrooms




A stunning two bedroom ground floor garden flat, situated in one of Poet's corner's premier residential roads. Well presented throughout, this property has a wealth of period features and includes a spacious reception room, two double bedrooms, a separate eat in kitchen diner, and a fantastic rear garden. The property is well located for easy access to Acton Central, Acton Mainline and moments from the vibrant café culture of Churchfield Road and a great selection of boutique shops, bars and eateries.

The current owner says:
This apartment is in a really great location for the local shops and transport links

 Garden apartment

 1 receptions

 2 bedrooms

 On street

 East facing garden

What's better:

Walking distance to Acton Mainline Station and a 6 minute train into Paddington. It will also be the Crossrail link into Central London which is planned to finish 2021/2022.

