

Wavendon Avenue, W4

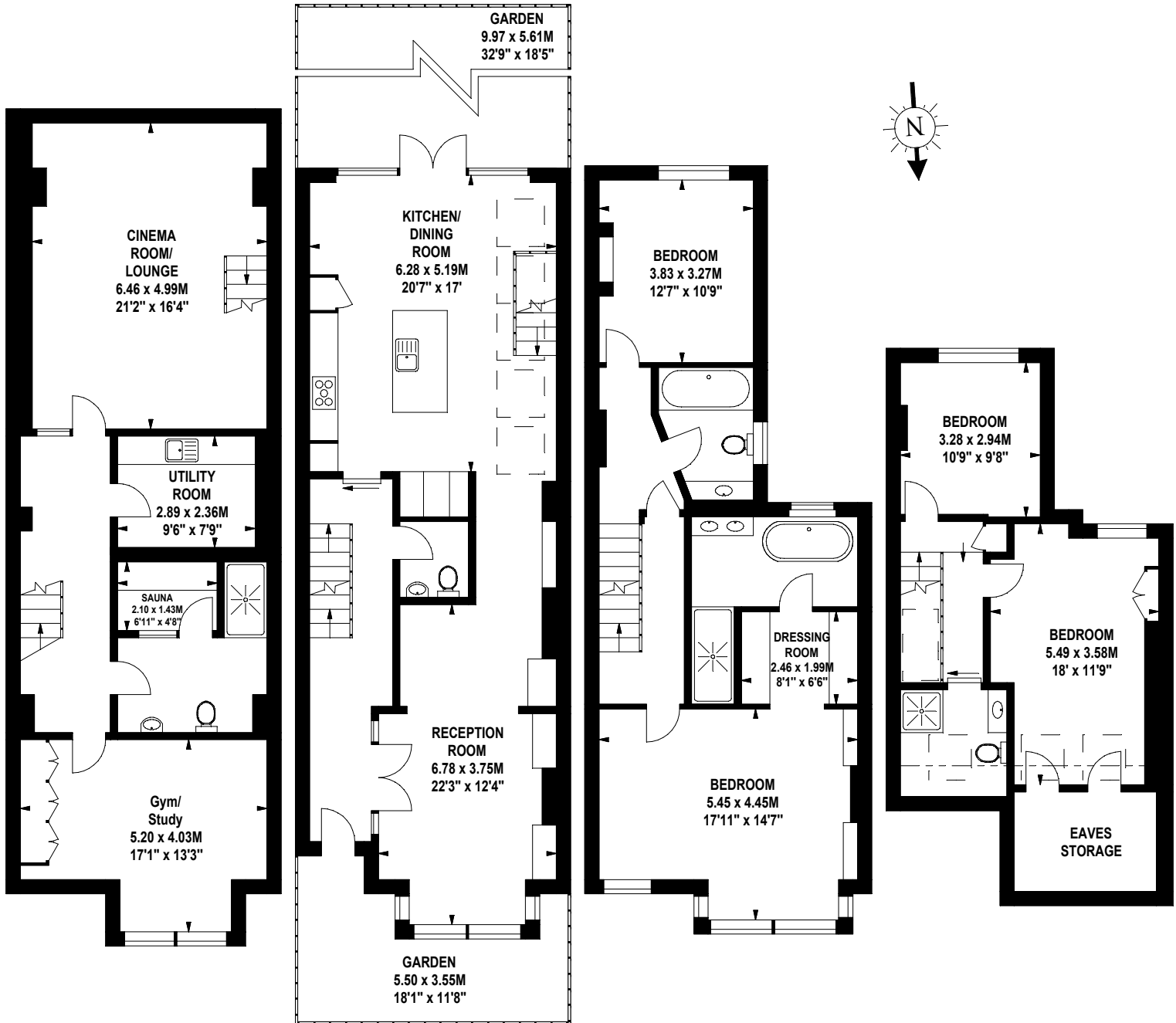
Approximate gross internal area

275.45 sq m / 2965 sq ft

(Including Eaves Storage)

Eaves Storage

6.78 sq m / 73 sq ft



Lower Ground Floor
895 sq ft

Ground Floor
844 sq ft

First Floor
722 sq ft

Second Floor
431 sq ft

The floor plan is not to scale and measurements and areas shown are approximate and therefore should be used for illustrative purposes only. The plan has been prepared in accordance with the RICS code of Measuring Practice and whilst we have confidence in the information produced, it must be not be relied on. If there is any aspect of particular importance, you should carry out or commission your own inspection of the property.
Copyright of FeaturePRO.