



18 Old Oak Common Lane
Acton
London
W3 7EL
T: 020 8749 9798
E: sales@churchillmathesons.com
www.churchillmathesons.com

Churchill&Mathesons

Craven Park Road, London, NW10 8SE

Asking Price £340,000 Leasehold



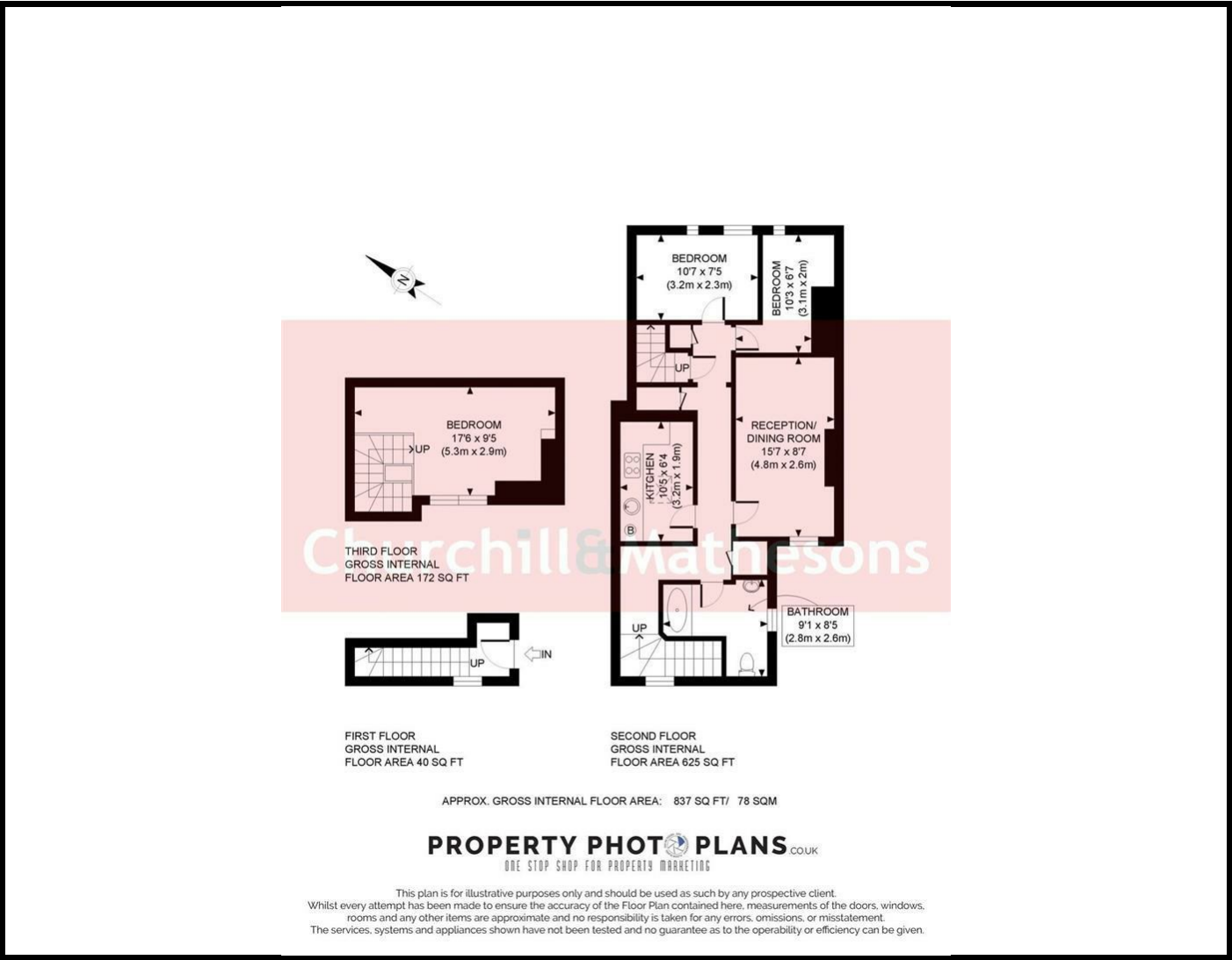
KEY FEATURES:

- THREE BEDROOM
- SPLIT LEVEL MASIONETTE
- SEPERATE KITCHEN
- ON THE SECOND AND THIRD FLOOR
- NO UPPER CHAIN
- CLOSE TO SHOPS

A SPLIT LEVEL three bedroom maisonette situated on the second and third floor.

The property comprises of second floor landing, entrance hall, lounge/diner, separate kitchen, two bedrooms and bathroom on the third floor there is a third bedroom. Further benefits are the property is being offered with NO UPPER CHAIN.

Craven Park Road is located close to a wide range of shops and independent cafes. Local nurseries and schools are a short walk away. Transport links including bus routes to Brent Cross, Acton, Wembley and Willesden Green are just moments away and Harlesden Train Station (London Overground & Bakerloo Line - Zone 3) and Willesden Junction Station (London Overground & Bakerloo Line - Zone 2 & 3) are a 10 minute walk away. Local Borough of Brent. Council Tax Band C.



Energy Efficiency Rating		
	Current	Potential
Very energy efficient - lower running costs		
(92 plus) A		
(81-91) B		
(69-80) C		
(55-68) D	63	70
(39-54) E		
(21-38) F		
(1-20) G		
Not energy efficient - higher running costs		
England & Wales	EU Directive 2002/91/EC	

Environmental Impact (CO ₂) Rating		
	Current	Potential
Very environmentally friendly - lower CO ₂ emissions		
(92 plus) A		
(81-91) B		
(69-80) C		
(55-68) D		
(39-54) E		
(21-38) F		
(1-20) G		
Not environmentally friendly - higher CO ₂ emissions		
England & Wales	EU Directive 2002/91/EC	

Whilst every effort is made to give a fair description, the accuracy of these particulars is not guaranteed, neither do they constitute an offer or contract.

CHURCHILL & MATHESONS ESTATE AGENTS have not tested any apparatus, equipment, fitting or services and so cannot verify that they are in working order. The buyer is advised to obtain verification from their solicitor or surveyor. Measurements are correct to within+/-6 A sonic tape is used. None of the statements contained in these particulars or any of our properties are to be relied upon as a representation of fact.