



Pymers Mead, SE21
£875,000

020 8702 8111
pedderproperty.com

pedder



In general

- A stunning modern townhouse for sale
- Upgraded and modernised to an extremely high standard
- 3 bedrooms (4th bedroom can be reinstated)
- Spacious open-plan ground floor kitchen/breakfast /family room
- Further double reception room, modern family bathroom
- Lovely, secluded patio garden
- Drive providing off road parking
- Highly sought-after location
- Beautifully presented throughout
- Offered with no onward chain

In detail

A stunning modern townhouse for sale located on this much sought after development set back from Croxted Road in Dulwich.

The property has been upgraded and modernised to a high standard creating a beautiful family home. The ground floor has been remodelled and comprises of a large open-plan kitchen/breakfast/family room and a cloakroom. The 1st floor has a large double reception room and a bedroom/study.

The 2nd floor has a master bedroom (originally 2 bedrooms which have been knocked through into 1 large room - the 2 rooms could easily be reinstated), a further double bedroom and family bathroom. To the rear of the property there is an attractive patio garden and to the front there is a drive providing off road parking.

Both Dulwich Village and Herne Hill are close by with their outstanding schools, popular parks, numerous cafes, bars and restaurants. Excellent rail links to central London are from nearby West Dulwich (Victoria/Blackfriars) and Herne Hill (Victoria/Thameslink).

An internal viewing of this lovely property is advised. Offered with no onward chain.

EPC: D | Council Tax Band E

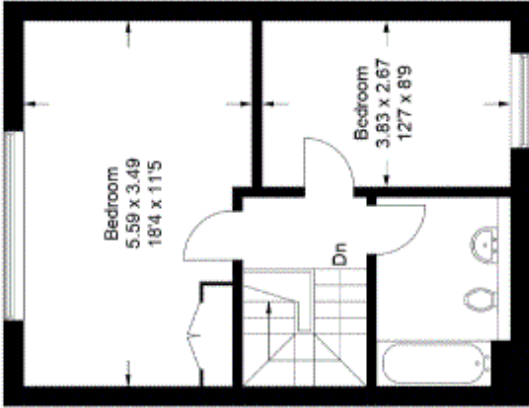


Score	Energy rating	Current	Potential
92+	A		
81-91	B		
69-80	C		
55-68	D	64 D	76 C
39-54	E		
21-38	F		
1-20	G		

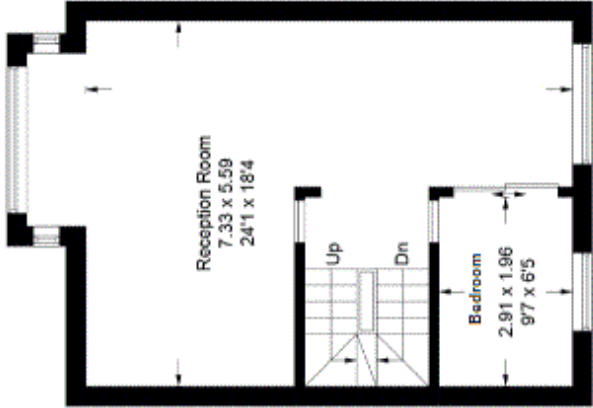
Floorplan

Pymers Mead, SE21

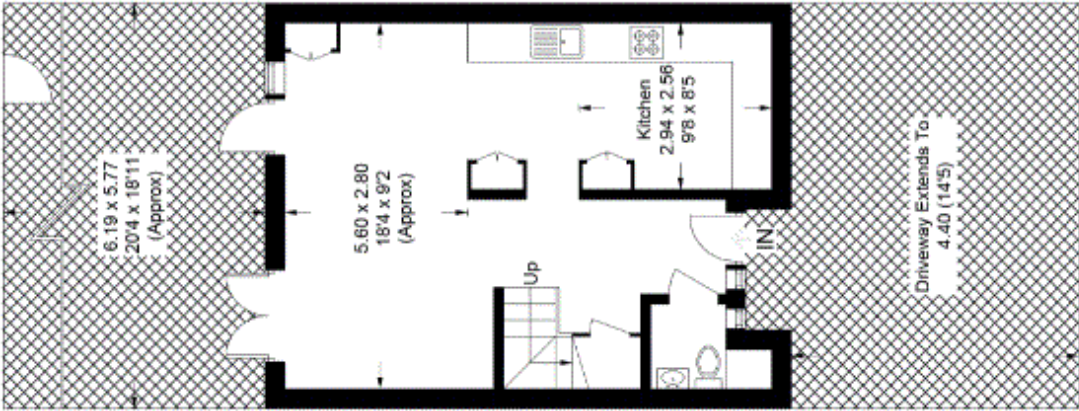
Approximate Gross Internal Area = 126.3 sq m / 1359 sq ft



Second Floor



First Floor



Ground Floor

Copyright www.pedderproperty.com © 2020
 These plans are for representation purposes only as defined by RICS - Code of Measuring Practice.
 Not drawn to Scale. Windows and door openings are approximate. Please check all dimensions, shapes and compass bearings before making any decisions reliant upon them.

Pedder Property Ltd trading as Pedder for themselves and for the vendor/landlord of this property whose agents they are, give notice that (1) these particulars do not constitute any part of an offer or contract, (2) all statements contained within these particulars are made without responsibility on the part of Pedder or the vendor/landlord, (3) whilst made in good faith, none of the statements contained within these particulars are to be relied upon as a statement of representation or fact, (4) any intending purchaser/tenant must satisfy him/herself by inspection or otherwise as to the correctness of each of the statements contained within these particulars, (5) the vendor/landlord does not make or give either Pedder or any person in their employment any authority to make or give representation or warranty whatsoever in relation to this property.