

COMMERCIAL
RETAIL UNIT
TO LET

City & Counties
— Commercial —

BROMLEY



52 Hayes Street, Bromley BR2 7LD

Price £16,500 Per Annum



Property Type

LETTING



Size

495 SQFT



Tenure

FREEHOLD



Borough

BROMLEY



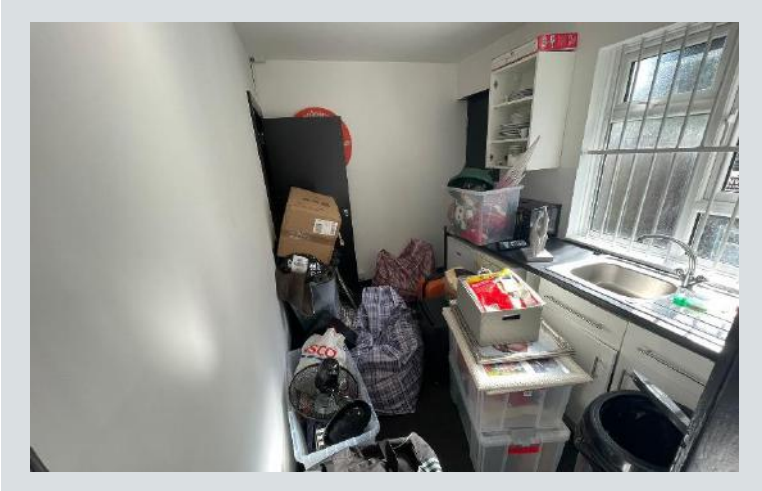
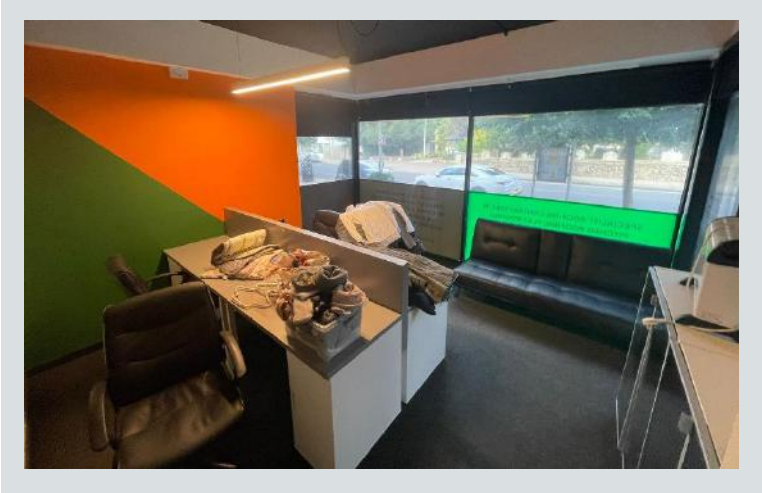
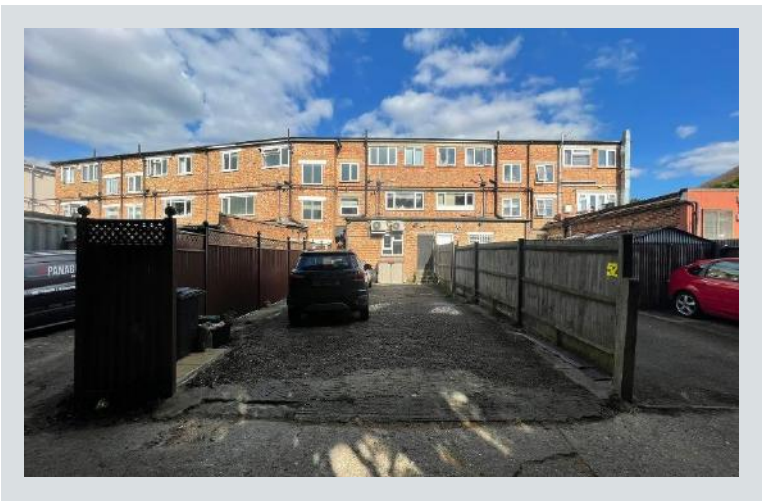
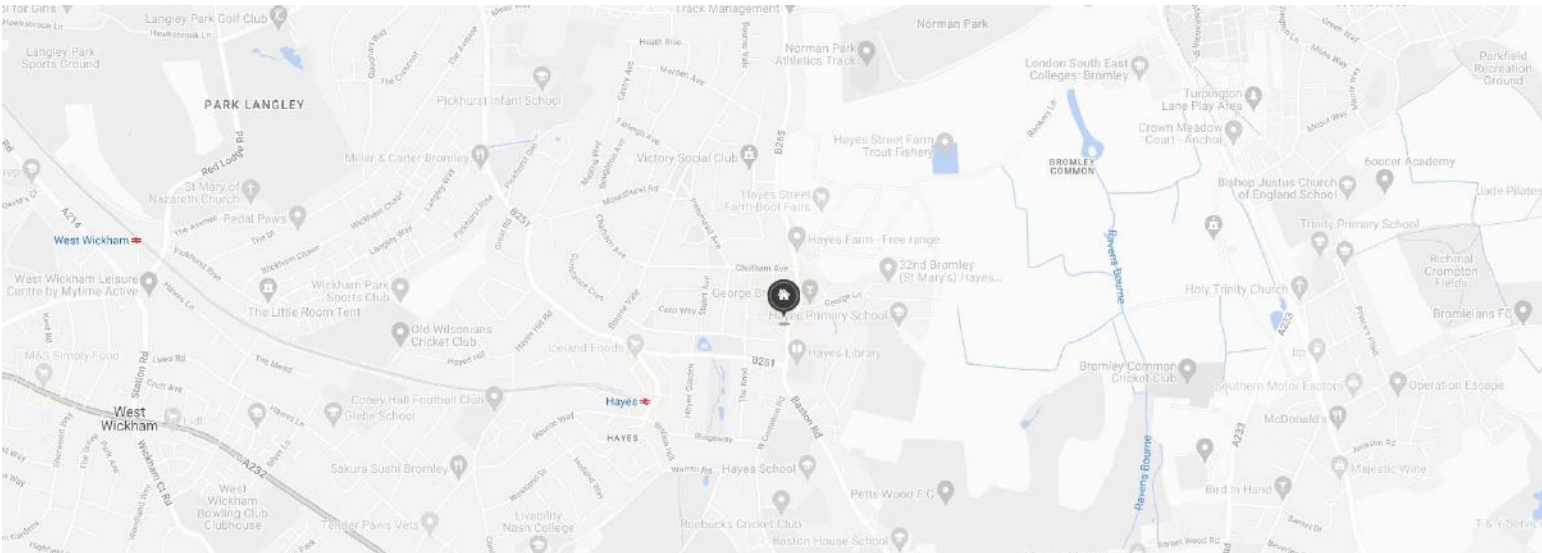
Recent Planning







NO



Existing Use

CLASS E



 Tenanted NO	 Local Train Stations Hayes (0.4 miles) West Wickham (1.4 miles) Bromley South (1.5 miles)	 Local Amenities Hayes Library (120 yards) Sainsbury's (0.4 miles) Norman Park (0.8 miles)
 VAT Applicable YES	 Rateable Value £8,800	 EPC Rating N/A

Additional Information

52 Hayes Street is situated within a busy parade of shops. The premises measures approximately 495 sqft in size and has been recently refurbished.

The unit has been partly partitioned and consists of a toilet, a kitchenette, a back entrance for deliveries and parking for two cars at the rear.

The owner is offering competitive prices on 5 year leases with a 6 month break clause.

All enquiries are welcome, and viewings are strictly by appointment only.

CONTACT US



Nathan King
SENIOR PROPERTY CONSULTANT

E: nathan@cityandcounties.com

T: 020 8106 8666



Latif Acisu
PROPERTY CONSULTANT

E: latif@cityandcounties.com

T: 020 8106 8666



Unit 2, 2 Delacourt Road London SE3 8XA

T: 020 8106 8666 **E:** info@cityandcounties.com **Whatsapp:** 07523 863 026

www.cityandcounties.com

- These particulars are only a general outline for the guidance of intending purchasers or lessees and do not constitute in whole or in part an offer or a Contract.
- Reasonable endeavours have been made to ensure that the information given in these particulars is materially correct, but any intending purchaser or lessee should satisfy themselves by inspection, searches, enquiries, and survey as to the correctness of each statement.
- All statements in these particulars are made without responsibility on the part of City & Counties Commercial or the vendor or lessor.
- No statement in these particulars is to be relied upon as a statement or representation of fact.
- Neither City & Counties Commercial LLP nor anyone in its employment or acting on its behalf has authority to make any representation or warranty in relation to this property.
- Nothing in these particulars shall be deemed to be a statement that the property is in good repair or condition or otherwise nor that any services or facilities are in good working order.
- Photographs may show only certain parts and aspects of the property at the time when the photographs were taken, and you should rely on actual inspection.
- No assumption should be made in respect of parts of the property not shown in photographs.
- Any areas, measurements or distances are only approximate.
- Any reference to alterations or use is not intended to be a statement that any necessary planning, building regulation, listed building or any other consent has been obtained.
- Amounts quoted are exclusive of VAT if applicable.

IMPORTANT: we would like to inform prospective purchasers that these sales particulars have been prepared as a general guide only. A detailed survey has not been carried out, nor the services, appliances and fittings tested. Room sizes should not be relied upon for furnishing purposes and are approximate. If floor plans are included, they are for guidance only and illustration purposes only and may not be to scale. If there are any important matters likely to affect your decision to buy, please contact us before viewing the property.