



Gipsy Hill SE19
£875,000

0208 702 9333
pedderproperty.com

pedder



In general

- Three double bedrooms
- Beautifully finished throughout
- Off street parking
- Open-plan kitchen / living space
- First floor reception overlooking Long Meadow
- En suite shower room
- External home office / studio
- Cultivated rear garden
- Convenient for transport links and amenities

In detail

A superbly presented and much upgraded three double bedroom mid-century town house forming part of a small terrace overlooking Long Meadow at the bottom of Gipsy Hill.

The accommodation has been remodelled and finished to an exceptionally high standard, offering a new owner a well appointed and immediately enjoyable space.

The ground floor comprises of a sociable open-plan arrangement with a German-designed kitchen, integrated appliances and plenty of storage - this is to a fabulous lounge / dining space with two double doors to garden. Also a handy WC by the entrance door.

Upstairs is an extraordinarily light and bright reception room with a pleasant green outlook and a guest bedroom with a smart en suite shower room.

The top floor houses an L-shaped master bedroom, a contemporary bathroom (with a separate shower), and third bedroom. Externally there is off street parking and a well cultivated rear garden with a wealth of planting, a sizeable patio area, and a separate home office / studio space, and a westerly aspect.

Further notable benefits include roof solar panels, an abundance of fitted storage space, large windows for lots of natural light, and potential for an attic conversion (STP) if desired.

This location works well for access to Dulwich College, Dulwich Prep London, both Kingswood and Paxton primaries (Ofsted outstanding), the Crystal Palace Triangle, Norwood Park, and Gipsy Parade.

EPC E | Council Tax Band:



Floorplan

Grazeley Court, SE19

Approximate Gross Internal Area

Ground Floor = 38.1 sq m / 410 sq ft

First Floor = 37.4 sq m / 403 sq ft

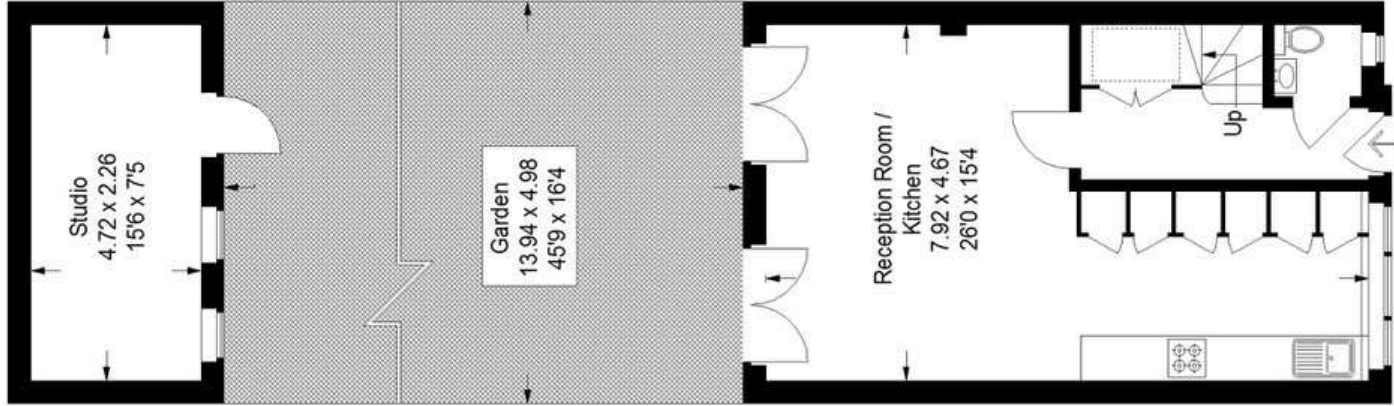
Second Floor = 37.4 sq m / 403 sq ft

Studio = 10.7 sq m / 115 sq ft

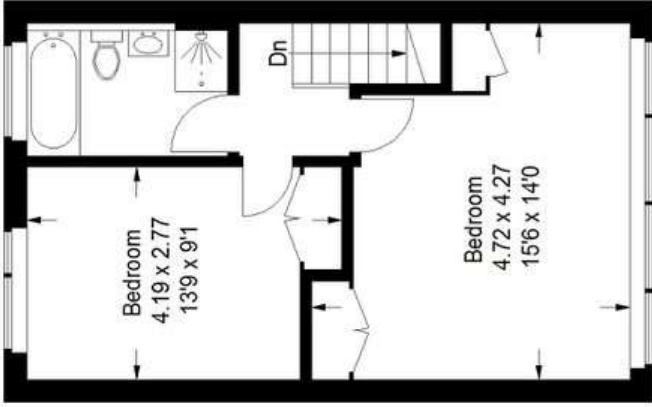
Total = 123.6 sq m / 1331 sq ft



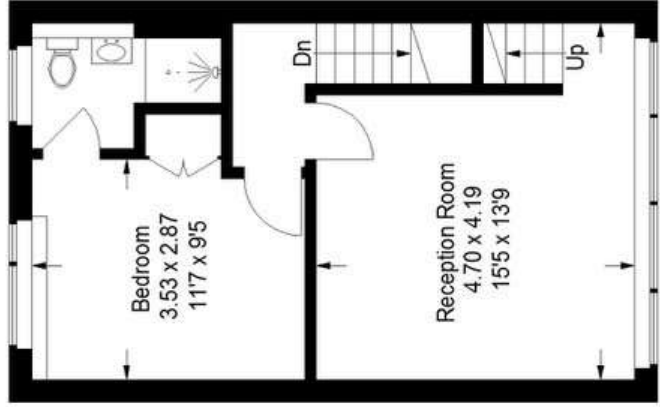
 = Reduced headroom below 1.5 m / 5'0"



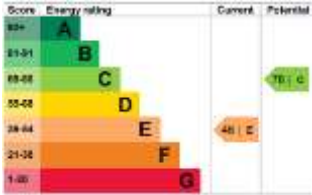
Ground Floor



Second Floor



First Floor



Pedder Property Ltd trading as Pedder for themselves and for the vendor/landlord of this property whose agents they are, give notice that (1) these particulars do not constitute any part of an offer or contract, (2) all statements contained within these particulars are made without responsibility on the part of Pedder or the vendor/landlord, (3) whilst made in good faith, none of the statements contained within these particulars are to be relied upon as a statement of representation or fact, (4) any intending purchaser/tenant must satisfy him/herself by inspection or otherwise as to the correctness of each of the statements contained within these particulars, (5) the vendor/landlord does not make or give either Pedder or any person in their employment any authority to make or give representation or warranty whatsoever in relation to this property.

Copyright www.pedderproperty.com © 2021
These plans are for representation purposes only as defined by RICS - Code of Measuring Practice. Not drawn to Scale. Windows and door openings are approximate. Please check all dimensions, shapes and compass bearings before making any decisions reliant upon them.