



Gatestone Road SE19  
OIEO £360,000

0208 702 9333  
[pedderproperty.com](http://pedderproperty.com)

**pedder**







# In general

- Top floor
- Share of the freehold
- Private entrance
- Separate utility space
- Pleasant elevated views
- Central location
- No onward chain

# In detail

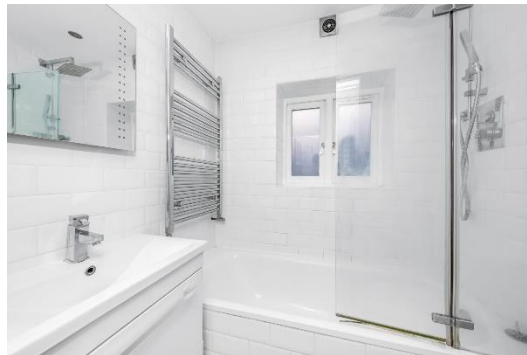
A charming two bedroom top floor period conversion centrally located in Crystal Palace and available for sale with no onward chain.

This light and bright property forms part of an attractive period building and is accessed via a private entrance.

Highlights include fresh, neutral decor throughout, a share of the freehold, exceptional elevated views from the living space, a 15ft 4 primary bedroom, a modern kitchen, and a separate utility space. Externally there is a leafy communal rear garden.

Gatestone Road is a quiet residential street offering near immediate access to the Triangle, as well as proximity to Gipsy Hill rail links and the park.

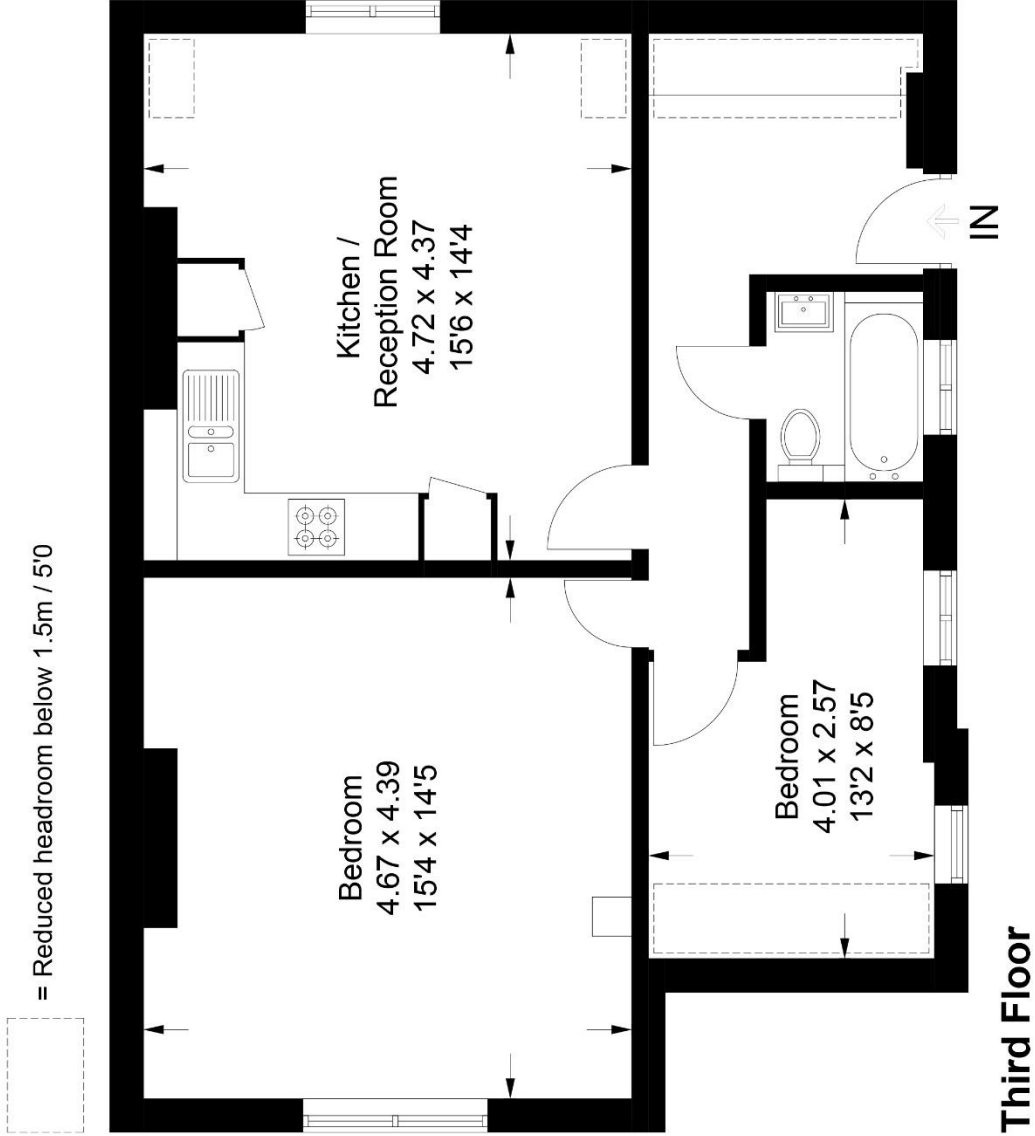
EPC: D



# Floorplan

Gatestone Road, SE19

Approximate Gross Internal Area = 63.1 sq m / 679 sq ft



Copyright www.pedderproperty.com © 2022  
These plans are for representation purposes only as defined by RICS - Code of Measuring Practice.  
Not drawn to Scale. Windows and door openings are approximate. Please check all dimensions,  
shapes and compass bearings before making any decisions reliant upon them.

Score	Energy rating	Current	Potential
92+	A		
81-91	B		
69-80	C		
55-68	D	55   D	72   C
39-54	E		
21-38	F		
1-20	G		

Pedder Property Ltd trading as Pedder for themselves and for the vendor/landlord of this property whose agents they are, give notice that (1) these particulars do not constitute any part of an offer or contract, (2) all statements contained within these particulars are made without responsibility on the part of Pedder or the vendor/landlord, (3) whilst made in good faith, none of the statements contained within these particulars are to be relied upon as a statement of representation or fact, (4) any intending purchaser/tenant must satisfy him/herself by inspection or otherwise as to the correctness of each of the statements contained within these particulars, (5) the vendor/landlord does not make or give either Pedder or any person in their employment any authority to make or give representation or warranty whatsoever in relation to this property.