



THREE BEDROOM END OF TERRACE HOUSE IN CARPENDERS PARK

Foxleys, Carpenders Park, Watford

ROBSONS

THREE BEDROOM END OF TERRACE HOUSE IN CARPENDERS PARK

Foxleys, Carpenders Park, Watford

THREE BEDROOMS • TWO BATHROOMS • FULLY FITTED KITCHEN • LIVING AREA/ DINING ROOM • MODERN • TWO ALLOCATED PARKING SPACES • PRIVATE REAR GARDEN • CLOSE TO STATION •

Description

A well presented three bedroom, two bathroom end-of-terrace modern house with two allocated parking spaces situated in a desirable location in Carpenders Park only half a mile (750m) from Carpenders Park Overground Station.

The accommodation comprises, on the ground floor, an entrance hall, a guest cloakroom, a bright lounge / dining room, and a fully fitted kitchen. The first floor offers a master bedroom with en-suite shower room, a further double bedroom, a single bedroom, and a family bathroom. Outside, to the rear, there is a good size private garden, and there are two allocated parking spaces close by.





Location

Foxleys is situated in a sought-after residential area within 0.5 of a mile (750m) of Carpenders Park Station with Overground services to Euston and Watford Junction. Also close by are local shopping facilities including chemist, post office, supermarket, hairdressers, bus services. St Meryl Primary School is opposite the house. The property is also close to a very pretty woodlands walk and the green open spaces of Attenborough's Fields and Merry Hill.

Additional Information

Guide Price: £525,000

Tenure: Freehold

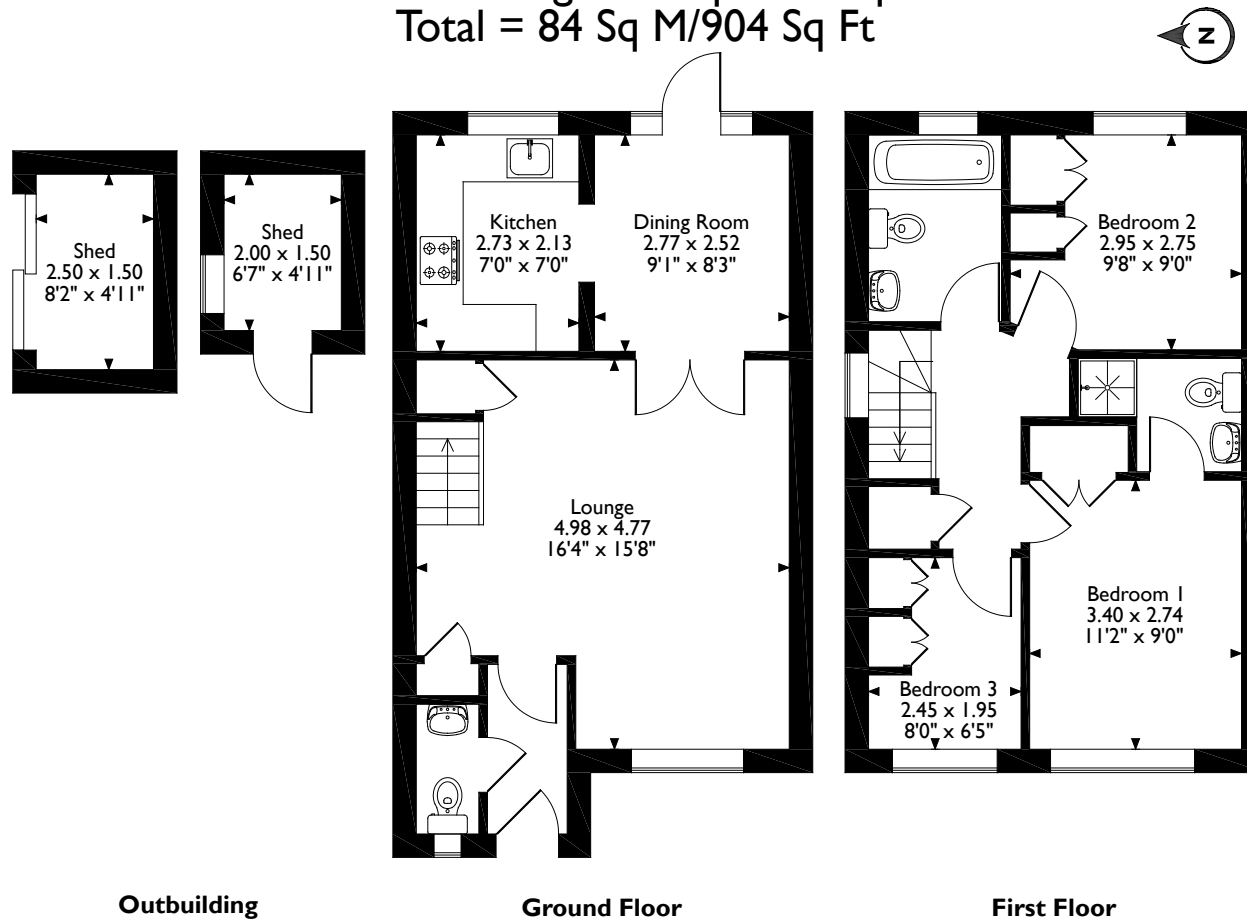
Local Authority: Three Rivers District Council

Council Tax Band: E

Energy Efficiency Rating: C



Foxleys, Watford, Hertfordshire
 Approximate Gross Internal Area
 Main House = 77 Sq M/829 Sq Ft
 Outbuildings = 7 Sq M/75 Sq Ft
 Total = 84 Sq M/904 Sq Ft



Please note that the location of doors, windows and other items are approximate and this floorplan is to be used for illustrative purposes only. Unauthorized reproduction is prohibited.

ROBSONS

Address 7 Clive Parade, Northwood, Middlesex, HA6 2QF

Tel: 01923 835355 northwood@robsonswb.com

www.robsonswb.com

www.the-londonoffice.co.uk
 40 ST JAMES'S PLACE SW1

Important notice: Robsons, their clients and any joint agents give notice that 1: They are not authorised to make or give any representations or warranties in relation to the property either here or elsewhere, either on their own behalf or on behalf of their client or otherwise. They assume no responsibility for any statement that may be made in these particulars. These particulars do not form part of any offer or contract and must not be relied upon as statements or representations of fact. 2: Any areas, measurements or distances are approximate. Plot sizes and dimensions are taken from Promap and are approximate. The text, photographs and plans are for guidance only and are not necessarily comprehensive. It should not be assumed that the property has all necessary planning, building regulation or other consents and Robsons have not tested any services, equipment or facilities. Purchasers must satisfy themselves by inspection or otherwise.