



TARGET PROPERTY

Residential Sales and Lettings



Mount View, Enfield, EN2 8LF

Offers Around £385,000



Target Property are pleased to offer For Sale exclusively, Kingfisher Court EN2 with NO ONWARD CHAIN! The apartment has been decorated, tastefully throughout but is also neutral and enhances modern living. Spacious rooms throughout including...Lounge extending into an adjoining separate dining room, 2 Double Bedrooms, a Family Bathroom & En-Suite / ample storage space.

Situated in one of Enfield's most desired locations, just off of the Ridgeway and is within walking distance to Gordon Hill Over Ground Train Station as being surrounded by shops / bars / restaurants and much more within the local area.

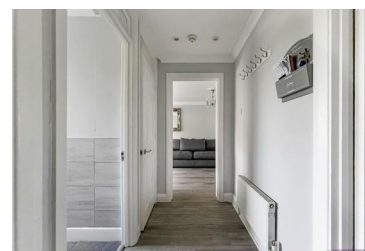
The upper floor apartment boasts a fully fitted kitchen with integrated appliances, double glazing, gas central heating (not tested).

Vendor info:

Service Charges: £2,000 P/a

Ground Rent: £120 PA

Leasehold 93 Years Remaining



783 Hertford Road | Enfield | London | EN3 6UG
t. 01992 766 245 | e. Theo@targetproperty.co.uk

Zoopla



rightmove



www.targetproperty.co.uk