



## 260 Finchley Road

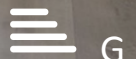
, London, NW3 7AA

£1,450,000

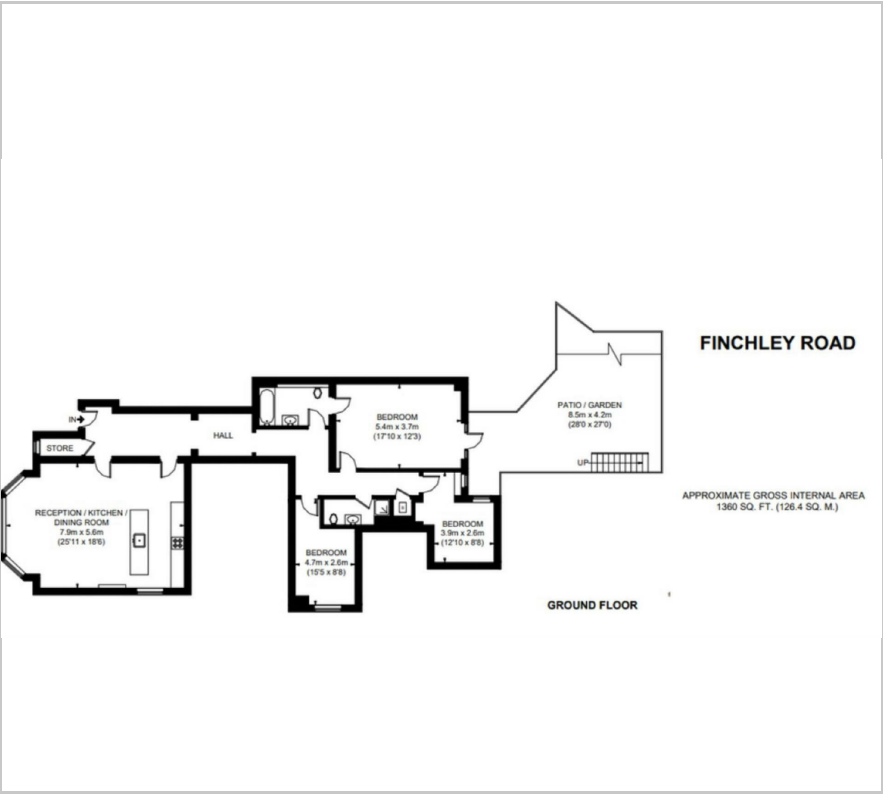
Wayne & Silver are delighted to offer this superb, 3 bedroom luxury apartment in a period building. Arranged over the raised ground floor and having just been newly redecorated to a very high standard and still maintaining some original features, the property boasts high ceilings, with bespoke doors, a beautiful open-plan fitted kitchen with underfloor heating, 2 modern bathrooms (one en-suite), a separate guest WC and 3 double bedrooms. Additional benefits are the allocated off-street parking and the private patio garden. Grosvenor House is well located for all the amenities of both Hampstead and Finchley Road, including West Hampstead Underground Stations (Jubilee Line) and Thameslink national rail services

### Viewing

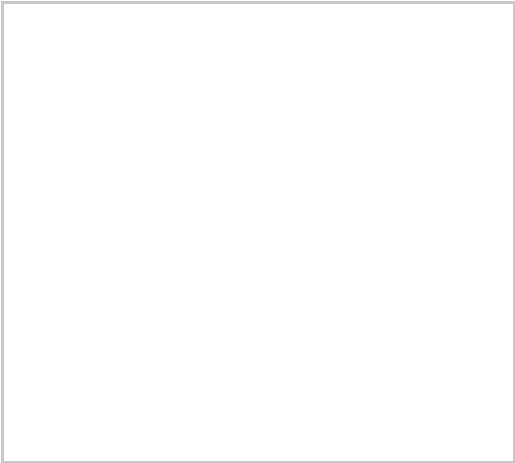
Please contact our Hampstead Sales Office on 020 7431 4488 if you wish to arrange a viewing appointment for this property or require further information.



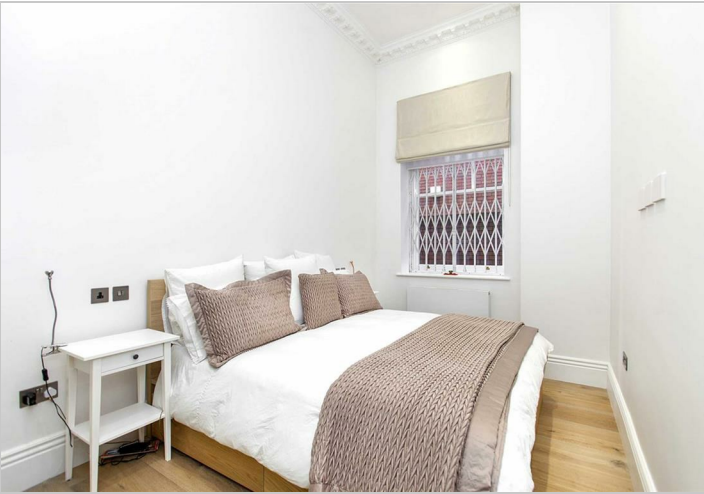
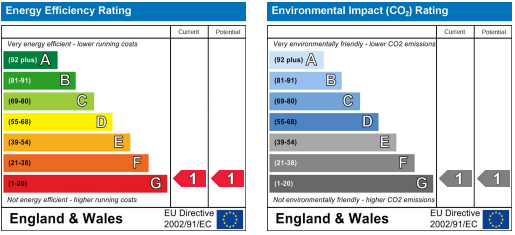
Floor Plan



Area Map



Energy Efficiency Graph



These particulars, whilst believed to be accurate are set out as a general outline only for guidance and do not constitute any part of an offer or contract. Intending purchasers should not rely on them as statements of representation of fact, but must satisfy themselves by inspection or otherwise as to their accuracy. No person in this firms employment has the authority to make or give any representation or warranty in respect of the property.