



Ringmore Rise SE23
£1,400,000

0208 702 9444
pedderproperty.com

pedder





In general

- Chain Free
- Detached house
- Five double bedrooms
- Four bathrooms
- Private rear garden
- Sought-after location
- Off street parking
- Breathtaking views of London
- Large garden
- Close to popular schools

In detail

A wonderful five double bedroom detached house for sale on the incredibly popular Ringmore Rise set at the peak of Forest Hill boasting breathtaking views of the city of London.

This incredible home offers over 2,000 sq ft and comprises five double bedrooms, four bathrooms of which three are en-suite, a 32ft open plan kitchen/reception room leading to a conservatory with bi-folding doors leading directly to a large private rear garden. Further benefits include stunning views of the city of London, ground floor WC, utility room, off-street parking, garage and so much more.

The property is located approximately just 0.6 miles from Forest Hill station offering excellent transport links into London Bridge, Victoria, Canada Water, Shoreditch, Whitechapel, Highbury & Islington. It is also just a short walk to various amenities including a variety of restaurants, coffee shops, cafes, gastro pubs, the amazing Horniman Museum & Gardens. Offered chain free.

Call the Pedder Forest Hill sales team to arrange a viewing today.

EPC E | Council Tax Band G



Floorplan

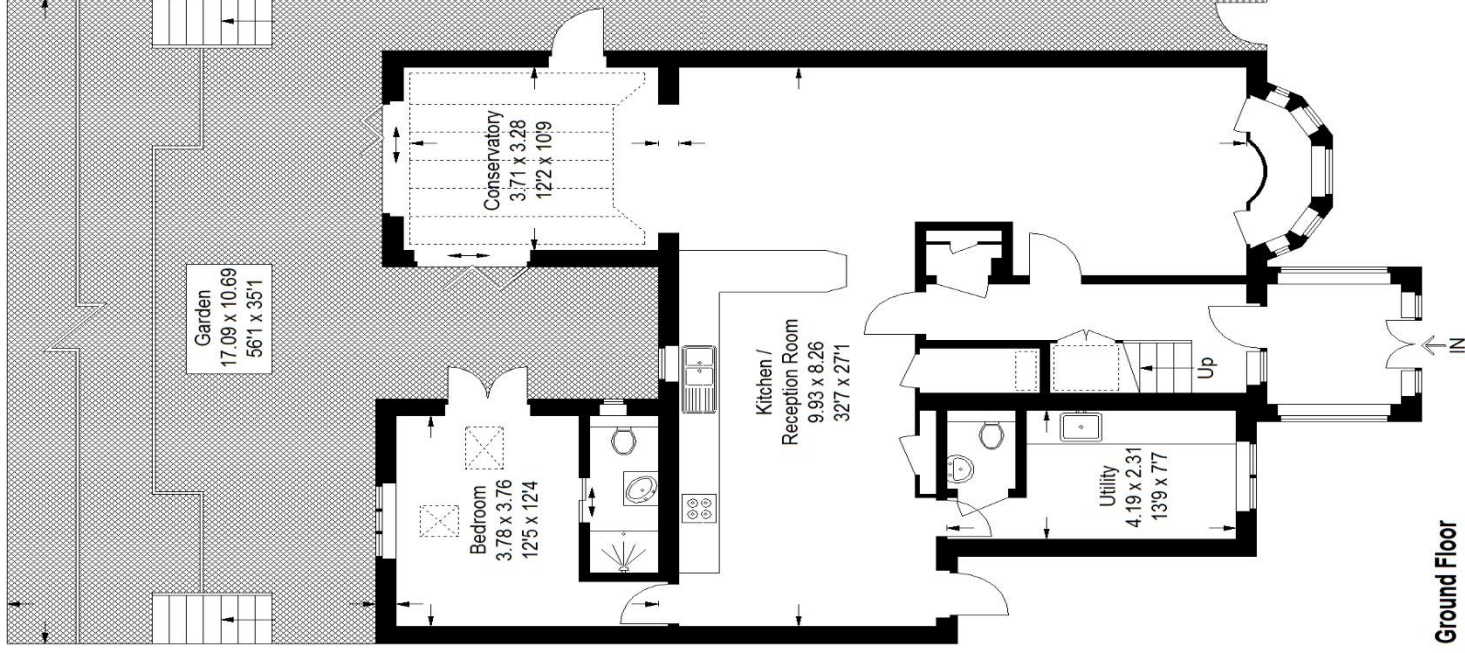
Ringmore Rise, SE23

Approximate Gross Internal Area

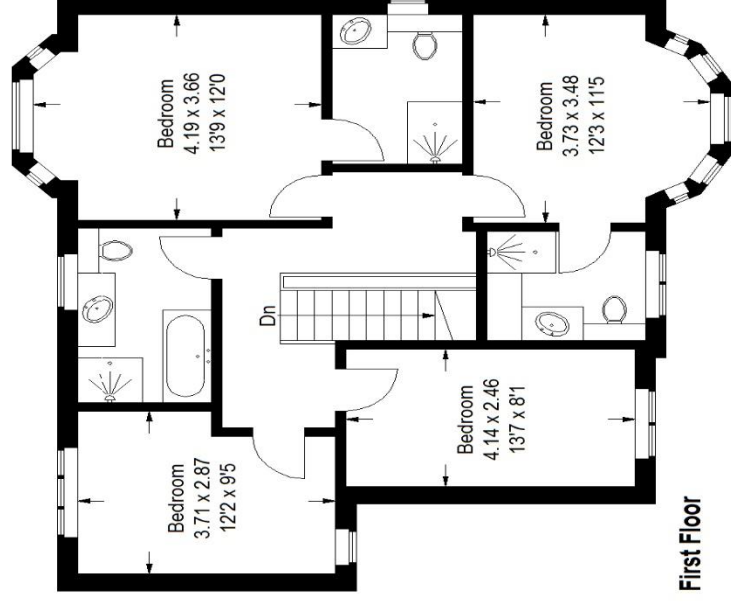
Ground Floor = 111.6 sq m / 1201 sq ft

First Floor = 78.1 sq m / 841 sq ft

Total = 189.7 sq m / 2042 sq ft



□ = Reduced headroom
below 1.5 m / 50



Ground Floor

First Floor

Score	Energy rating	Current	Potential
92+	A		
81-91	B		
69-80	C		
55-68	D		
39-54	E	52 E	
21-38	F		
1-20	G		

71 | C

Pedder Property Ltd trading as Pedder for themselves and for the vendor/landlord of this property whose agents they are, give notice that (1) these particulars do not constitute any part of an offer or contract, (2) all statements contained within these particulars are made without responsibility on the part of Pedder or the vendor/landlord, (3) whilst made in good faith, none of the statements contained within these particulars are to be relied upon as a statement of representation or fact, (4) any intending purchaser/tenant must satisfy him/herself by inspection or otherwise as to the correctness of each of the statements contained within these particulars, (5) the vendor/landlord does not make or give either Pedder or any person in their employment any authority to make or give representation or warranty whatsoever in relation to this property.